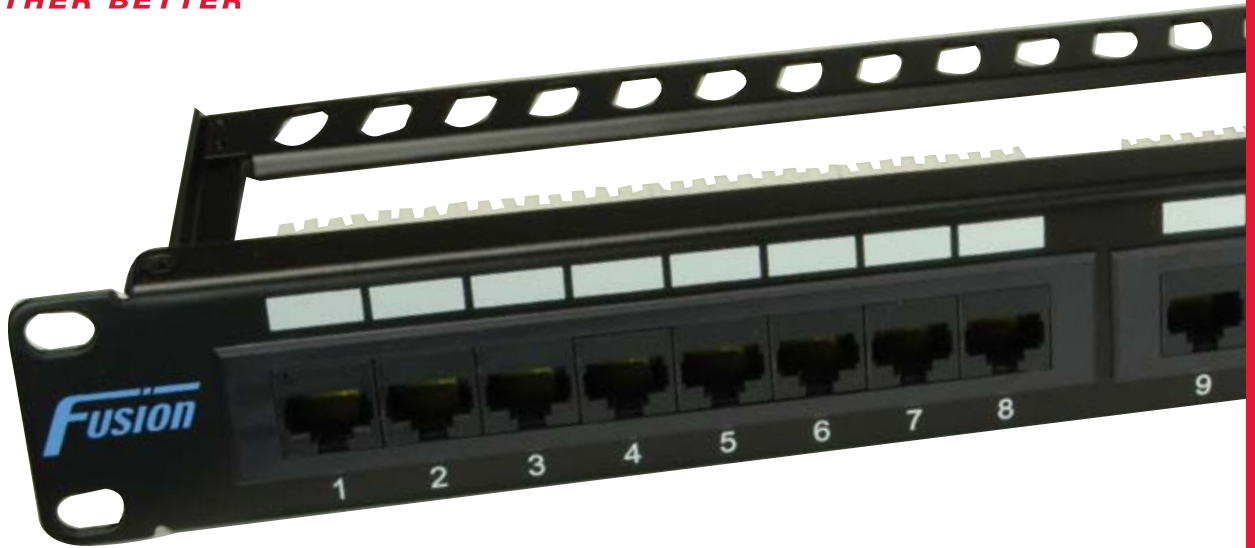




Fusion Cat 6 UTP 24 Port 1U Patch Panel

Each panel is supplied with rear cable management bar, 4 cage nut sets and cable ties.

Part no. T77-9816



- 25 year system warranty
- Krone™ tool compatible
- Rear cable management bar included



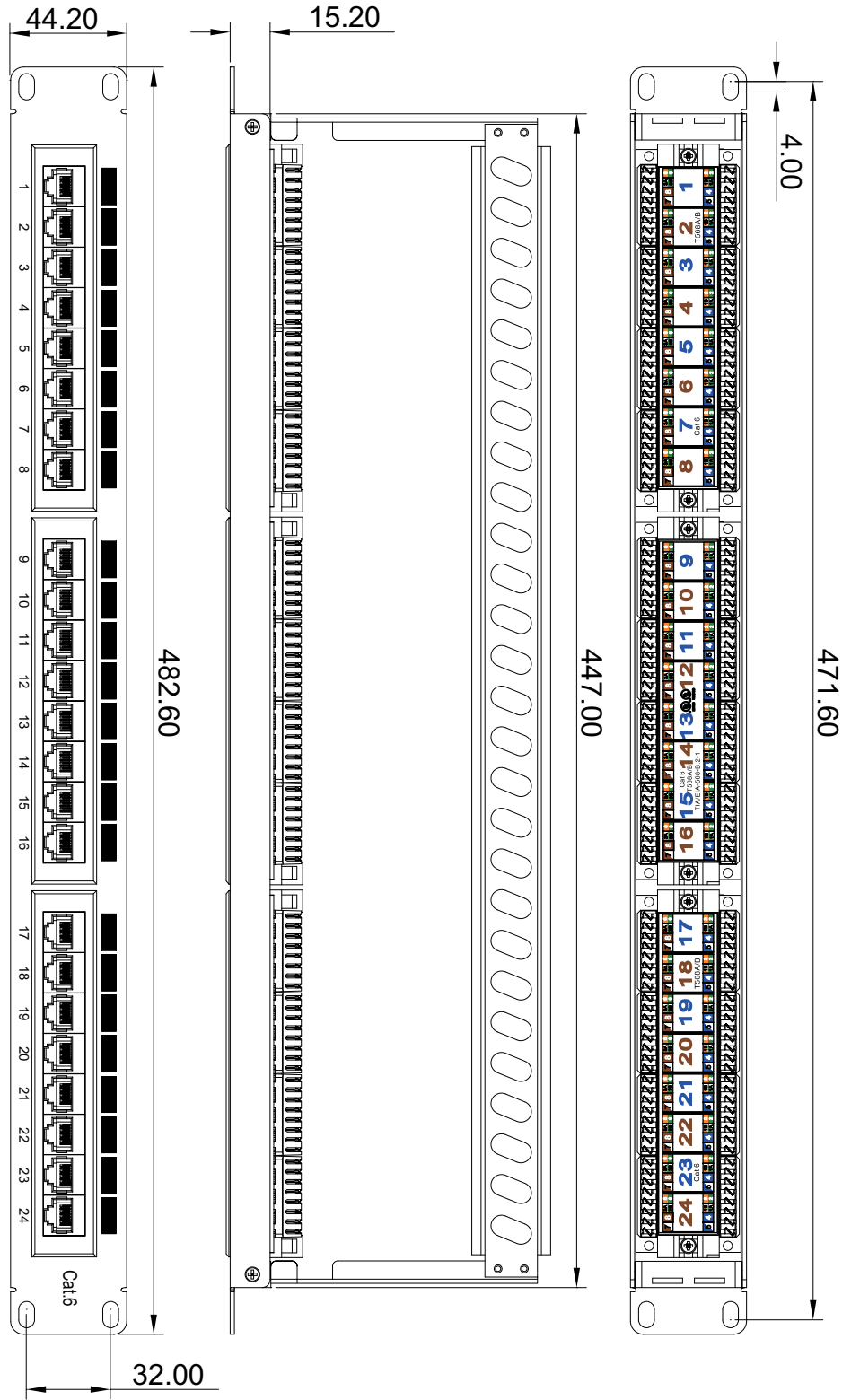
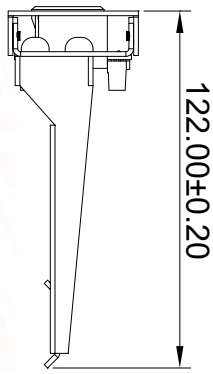
Materials

Metal frame:	High Carbon Steel
Plastic housing:	PBT
RJ45 contact:	Golden clad Phosphor Bronze
IDC terminal:	Phosphor Bronze with Tin plating

Performance:

Specification:	Category 6
Port Density:	24 ports per 1U
Wiring Specification:	T568A & T568B
Operation Temperature:	-10° to 60°
Modular Jack:	750 mating-unmating cycles
IDC:	Up to 250 re-terminations
Compliance:	ANSI/TIA/EIA 568 B.2-1

Dimensions:



Included:

- Cable tie x 6 pcs
- Management bar x 1 pcs
- Caged nut set 4 pcs



Issue date: 03/09/2014



Tel: 0845 370 4709 sales@fusiondatacom.com www.fusiondatacom.com

FUSION DATACOM, PO BOX 556, GREENFORD UB5 9JS, UNITED KINGDOM