

# Seal Kits for BUDI Enclosures

## Ordering Guide

### Description

BUDI is a product range of compact, wall mountable fiber enclosures for indoor and outdoor use. They are specifically designed for fast deployment and easy customer connection. The FIST management system is a proven TE Connectivity technology for optimal fiber organization and splicing. In combination with a patch panel, this system offers ultimate flexibility.

Available with splicing and/or patching capabilities, high connector density, small and larger footprints, the BUDI product range offers flexible solutions for a wide range of applications in the access network.

### Sealing

TE Connectivity's expertise in sealing and gel technology has been used to create end-to-end network solutions that can withstand the harsh conditions of the outside plant environment.

The seal kits described in this document enable network operators to perform fast and easy installations of different types and sizes of cables in the BUDI product range and protect their connections.

### Ordering

- To order seal kits, please see next pages.
- Ordering information for the different building distribution enclosures can be found on the [data sheet](#) of each product
  - BUDI Splice with FIST (data sheet: tc-1160-ds)
  - BUDI Plug & Play (data sheet: tc-1161-ds)
  - BUDI Splice/Patch with FIST (data sheet: tc-1162-ds)
- If you want to order splitters, please refer to the [data sheet for Modular Wideband Couplers/Splitters for MDU Applications \(OCM6\)](#) (data sheet tc-1063-ds)

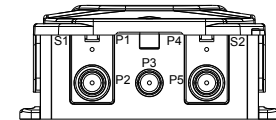
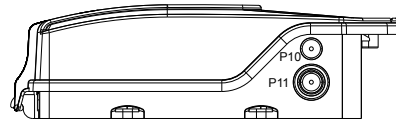
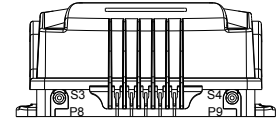
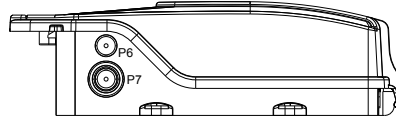
# Seal Kits for BUDI Enclosures

## Ordering Guide

### 1. Cable Seals

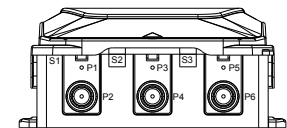
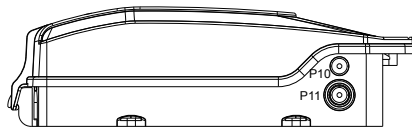
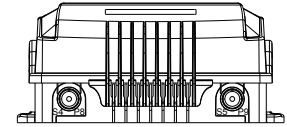
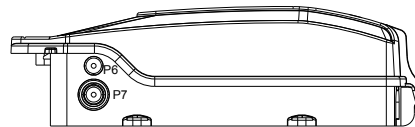
#### BUDI-1S PORTS

Port number	BUDI-1S
S1, S2	All BUDI-S-SEAL kits
P1, P4	n.a.
P2, P5	PG16, PG21, PG29
P3	PG16
P6, P10 (side)	PG16
P7, P11 (side)	PG16, PG21, PG29
S3, S4 (top)	no sealing kits
P8, P9 (top)	M12



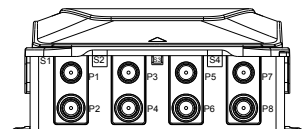
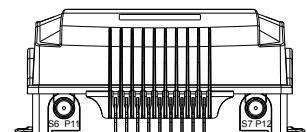
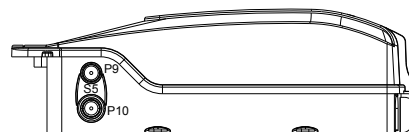
#### BUDI-S PORTS

Port number	BUDI-S
S1, S2, S3 (bottom)	All BUDI-S-SEAL kits
P1, P3, P5 (bottom)	n.a.
P2, P4, P6 (bottom)	PG16, PG21, PG29
P11, P7 (side)	PG16, PG21, PG29
P6, P10	PG16
S4, S5	BUDI-S/M- INLINE-SEAL
P8, P9	PG16, PG21
P8, P9 (top)	M12



#### BUDI-M PORTS

Port number	BUDI-M
S1, S2, S3, S4 (bottom)	All BUDI-M-SEAL kits
P1, P3, P5, P7 (bottom)	PG16, PG21
P2, P4, P6, P8 (bottom)	PG16, PG21, PG29
S6, S7 (top)	BUDI-S/M- INLINE-SEAL
P11, P12 (top)	PG16, PG21
S5, S8 (side)	n.a.
P9, P13 (side)	PG16, PG21
P10, P14 (side)	PG16, PG21, PG29



# Seal Kits for BUDI Enclosures

## Ordering Guide

### 2. Seal Kits

	Ordering number														
	BUDI-S-SEAL-4x10	BUDI-M-SEAL-6x10	BUDI-S-SEAL-4x15	BUDI-M-SEAL-6x15	BUDI-S-SEAL-2x20	BUDI-M-SEAL-3x20	BUDI-S-SEAL-24x5	BUDI-M-SEAL-24x5	BUDI-S-SEAL-24x7	BUDI-M-SEAL-24x7	BUDI-S-PTS	BUDI-M-PTS	BUDI-S-SEAL-4x15-MINI-BO1	BUDI-M-SEAL-4x15-MINI-BO1	BUDI-S/M-INLINE-SEAL
Max. cable diameter in mm	10	10	15	15	20	20	5	5	7	7	5	5	8.2	8.2	18
Wrap-around	y	y	y	y	y	y	n	n	n	n	y	y	y	y	y
Loop bracket	n	n	n	n	y	y	n	n	n	n	n	n	n	n	n
IP55 (vertical mounting)	y	y	y	y	y	y	y	y	y	y	n	n	y	y	n
Type of BUDI	● ●	●	● ●	●	● ●	●	● ●	●	● ●	●	● ●	●	● ●	●	● ●



#### BUDI-S-SEAL-4X10, BUDI-S-SEAL-4X15, BUDI-M-SEAL-6X10, BUDI-M-SEAL-6X15

Wrap-around cable seal kit for 4-6 cables of up to 10-15 mm diameter including:

- wrap-around cable seal
- seal foam tape
- cable fixation bracket and tie wraps

On this bracket you can fix the cables with ENSTO strength member fixation devices (separate item FIST-SB/MB-STRBR-01) and with hose clamps with an 8 mm band.



#### BUDI-S-SEAL-2X20, BUDI-M-SEAL-3X20

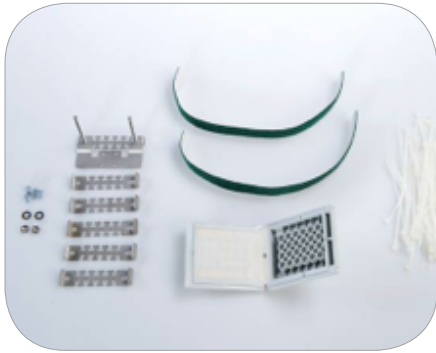
Wrap-around cable seal kit for 2-3 cables of up to 20 mm diameter and cable seal for looped cable installation (for BUDI-S spliced version only) including:

- wrap-around cable seal
- seal foam tape
- cable fixation bracket, hose clamps and strength member fixation plates

On this bracket you can fix the cables with ENSTO strength member fixation devices (separate item FIST-SB/MB-STRBR-01) and with hose clamps with an 8 mm band.

# Seal Kits for BUDI Enclosures

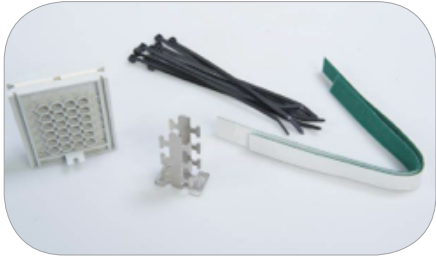
## Ordering Guide



### BUDI-S-SEAL-24X5, BUDI-M-SEAL-24X5

Push-through cable seal kit for 24 cables up to 5 mm diameter including cable fixation brackets and tie wraps.

Cables can be attached individually.



### BUDI-S-SEAL-24X7, BUDI-M-SEAL-24X7

Push-through cable seal kit for 24 cables up to 7 mm diameter including cable fixation brackets and tie wraps.

Cables are attached in groups of 4 cables

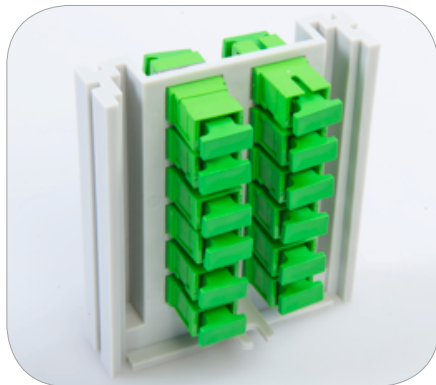


### BUDI-S-PTS, BUDI-M-PTS

Wrap-around pigtail seal for pigtails with a diameter up to 5 mm (for indoor use), no cable fixation.

Maximum capacity:

Cable diameter	BUDI-S/S	BUDI-M
2.4 mm	72 (2x36) pcs	72 (2x36) pcs
3 mm	48 (2x24) pcs	72 (2x36) pcs
5 mm	16 (2x8) pcs	24 (2x12) pcs



### BUDI-S-PPS-XX XX

Seal with integrated patch panel up to 24 connections. For indoor use only, no pigtails included.

Options:

- BUDI-S-PPS-12 S1 (12 SC/UPC)
- BUDI-S-PPS-12 S2 (12 SC/APC 8°)
- BUDI-S-PPS-24 L1 (24 SC/UPC)
- BUDI-S-PPS-24 L2 (24 SC/APC 8°)

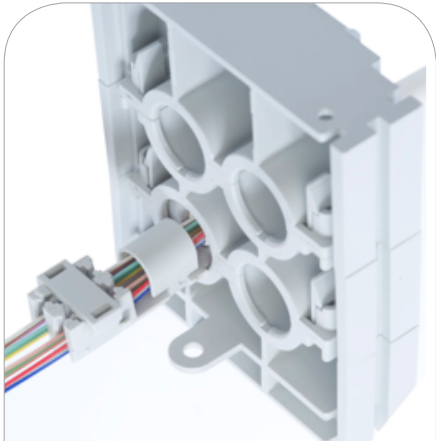
# Seal Kits for BUDI Enclosures

## Ordering Guide



### **BUDI-S/M-INLINE-SEAL (NON IP55 WHEN INSTALLED)**

Rubber seal allowing cable feed-through from top ports. Maximum cable diameter up to 18 mm.



### **BUDI-S-SEAL-4X15-MINI-B01, BUDI-M-SEAL-6X15-MINI-B01**

Seal and component to clip around the TE mini-breakout cable only.

Supported cable types:

- OC-CB-MINI-B012-A-500
- OC-CB-MINI-B024-A-500



### **BUDI-MINI-BO-FIX01-D15**

Component to clip around the TE mini-breakout cable to provide cable retention and PICO element fixation when inserted in a standard BUDI seal of D 15 mm.

No seal included.

Box contains 100 clips.

## ORDERING GUIDE

**Tyco Electronics Raychem bvba**  
Diestsesteenweg 692  
3010 Kessel-Lo, Belgium  
Tel 32-16 351 011  
Fax 32-16 351 697

[www.te.com](http://www.te.com)



TE Connectivity, TE connectivity (logo), Tyco Electronics, and TE (logo) are trademarks of the TE Connectivity Ltd. family of companies and its licensors. All other logos, products and/or company names referred to herein might be trademarks of their respective owners.

The information given herein, including drawings, illustrations and schematics which are intended for illustration purposes only, is believed to be reliable. However, TE Connectivity makes no warranties as to its accuracy or completeness and disclaims any liability in connection with its use. TE Connectivity's obligations shall only be as set forth in TE Connectivity's Standard Terms and Conditions of Sale for this product and in no case will TE Connectivity be liable for any incidental, indirect or consequential damages arising out of the sale, resale, use or misuse of the product. Users of TE Connectivity products should make their own evaluation to determine the suitability of each such product for the specific application.

Tyco Electronics Corporation, a TE Connectivity Ltd. Company. All Rights Reserved.

TC 1160/DS/AD/1 02/14 Original © 2014