

Ordering Guide

for FOSC-400 product range



Ordering Guide of the Fiber-Optic Splice Closure (FOSC-400)



This document provides assistance with the selection of FOSC-400 closures. It includes the following sections:

1 Product description	2
2 Ordering information	3
2.1 Order quantity / lead time	3
2.2 How to order this product	3
2.2.1 Order closure and accessories separately	3
2.2.2 Order a customized kit	3
2.3 Closure name string	4
2.4 Accessories	5
2.4.1 Cable accessories	5
2.4.2 Splicing trays and storage baskets	5
2.4.3 Mounting kits & work stands	5
2.4.4 Miscellaneous	6
2.4.5 Installation kit components	6
2.5 Tools	6
3 Product guide	7
3.1 Closure description	7
3.2 Closure dimensions	8
3.3 Closure capacity	9
3.3.1 General (a)	9
3.3.2 Splicing trays	9
3.4 Accessories	10
3.4.1 Cable accessories	10
3.4.2 Mounting kits & work stands	11
3.4.3 Installation kit components	11

1 Product description



FOSC4FAM.JPG

The FOSC 400 products are butt-type closures used in the outside plant network when mass splice storage is the main requirement.

They are available in four different sizes and are typically used as track joints.

The FOSC-400 closures are made of a thermoplastic material.

The base and dome are sealed with a clamp and an O-ring system.

The base has one oval entry port for looped (uncut) cable and, depending on the closure size, 2, 4, 5 or 8 round ports for single cable exit.

The cable seals are manufactured from heat-shrinkable material.

Depending on the closure size, the splice storage and organizer trays can accommodate from 6 to 768 single fiber splices.

All splicing trays are hinged at one end so that any fiber can be accessed without:

- disturbing fiber on other trays,
- kinking buffer tubes, or
- Introducing losses.

All cable termination and sealing functions are provided with the closures.

Uncut loose buffer tube storage is provided in optional storage baskets.

2 Ordering information

2.1 Order quantity / lead time

Products and accessories are grouped in three classes.

<u>Class A</u>	standard products, small MOQ
<u>Class B</u>	standard products, standard MOQ
<u>Class C</u>	special products, higher MOQ, longer lead times, due to the lead time of the specific components in those products

The class of a component or accessory provides additional information on:

<u>MOQ</u>	Minimum Order Quantity
<u>SPQ</u>	Standard Packaging Quantity

Table 1: Component classification overview

		A		B		C	
		MOQ	SPQ	MOQ	SPQ	MOQ	SPQ
Closures	A / B	1	1	35	1	35	1
	D5/B	1	1	12	1	12	1
	D5	1	1	9	1	9	1
Accessories		1	1	See accessories list			

MOQ and SPQ are used to calculate the correct order quantity of the desired component and/or accessory:

$$\text{Order quantity} = \text{MOQ} + n \times \text{SPQ} \quad (n \geq 0)$$

2.2 How to order this product

2.2.1 Order closure and accessories separately

For maximum flexibility, the closure (paragraph 2.3) and the accessories (paragraph 2.4) can be ordered as separate items.

Note that only following closures can be ordered by single piece (Closure Class A):

- FOSC-400A4-NT-0-NNN
- FOSC-400A4-NT-0-NGV
- FOSC-400B4-NT-0-NNN
- FOSC-400B4-NT-0-NGV
- FOSC-400D5-NT-0-NNN
- FOSC-400D5-NT-0-NGV

2.2.2 Order a customized kit

Customer specific kits can be created using the closure name string (paragraph 2.3) and the accessories list (paragraph 2.4).

Note that a customized closure kit is always class B or C:

- The classification of the kit is B if all subcomponents are class A or B.
- The classification of the kit is C if one or more subcomponents are class C

2.3 Closure name string

FOSC400 - XX - XXX - X - X XX

Closure size

		Class
A4	420 mm - 4 round ports	A
B4	540 mm - 4 round ports	A
D5	710 mm - 5 round ports	A
A8	410 mm - 8 round ports (a)	B
AS	420 mm - 4 round ports	C
B2	540 mm - 2 round ports	C
D5/B	505 mm - 5 round ports	C

Tray type

	Class				
NT	No trays				A
	AS	A4	A8	B2 B4 D5/B	
<i>Splices at tray exterior (EU layout)</i>					
S24		x	x	x	A
S08		x	x		B
S12				x	B
S6,A6	x		x		C
A24		x	x	x	C
4R4		x	x		C
6R4				x	C
<i>Splices at tray interior (US layout)</i>					
72				x	A
24		x	x	x	B
36				x	B
12		x	x	x	C
S96,L96				x	C
A72,A96				x	C
24RS		x	x	x	C
96RS				x	C
RT,RT/P				x	C

Flash test for grounding

	Class
NN No ground feed-through No flash test valve	A
GV Pre-mounted ground feed-through Pre-mounted flash test point in dome	A
NV No ground feed-through Pre-mounted flash test point in dome	B
GN Pre-mounted ground feed-through No flash test valve	B

Moisture cable blocking

	Class
N No blocking	A
B Blocking	C

splice trays

	Class
0	A
1...12 AS	B
1...3 A4	B
1...4/8 A8 (b)	B
1...6 B (c)	B
1...12 D5/B	B
1...8 D5 (d)	B

- (a) A8 closure can accept a mix of standard and slim trays, contact product management for details
- (b) Maximum 8 trays in case of S6 or A6 tray type
- (c) B closure can initially be fitted with 6 trays, however, retrofitting a standard "B" closure (delivered with 4 trays or fewer) with a 5th and 6th tray is not possible.
B-closure with a capacity of up to 6 trays can be ordered (with up to 5 trays pre-installed), namestring becomes FOSC-400B4-XX-X/6-...
If 5 or 6 trays are required, a storage basket cannot be used.
- (d) If 7 or 8 trays are required, a storage basket cannot be used.

Standard kit content

- Dome Clamp O-ring
- Base including a tray tower to hold the splicing trays
- FOSC trays (quantity according to the ordering description)
- Transportation tubes with tie wraps (part of tray kit)
- 1 oval port seal kit including cleaning tissues, aluminum tape and abrasive strips
- Shield continuity wires for closure sizes B and D (not shown on the picture)
- Loose tube storage sleeve for closure size A/B (not shown on the picture)
- 1 bag with silica gel, 75 grams
- Installation instructions



2.4 Accessories

2.4.1 Cable accessories

Name	Description	Class	MOQ	SPQ
FOSC-A-CSEAL-1NT	A4 or AS-size: tubular cable sealing kit for 1 cable in any round port	A	1	1
FOSC-B/D-CSEAL-1NT	B or D-size: tubular cable sealing kit for 1 cable in any round port	A	1	1
FOSC-A8-CSEAL-1NT	A8-size: tubular cable sealing kit for 1 cable in any round port	B	1	1
FOSC-CSEAL-1NW	Wraparound cable seal sleeve for use on any round port (repair or re-entry).	B	1	1
FOSC-CSEAL-2NW	Wraparound cable seal sleeve for use on the oval port (repair or re-entry).	B	1	1
FOSC-A-CSEAL-2NT	A-size: tubular cable sealing kit for 2 cables in the oval port	B	1	1
FOSC-B/D-CSEAL-2NT	B or D-size: tubular cable sealing kit for 2 cables in the oval port	B	1	1
FOSC-A8-CSEAL-COLD-8	A8-size: tubular cold seal kit for aerial or pedestal applications	C	10	1
FOSC-FUNNEL-5-1-KIT	Kit to split a central or slotted core cable into a loose tube construction (1 in, 5 out)	C	10	1
FOSC-FUNNEL-10-1-KIT	Kit to split a central or slotted core cable into a loose tube construction (1 in, 10 out)	C	10	1

2.4.2 Splicing trays and storage baskets

Splicing trays are normally ordered as part of the closure kit.

See the ordering guide of FOSC splicing trays and baskets for more information and ordering references of storage baskets and splicing trays (if they need to be ordered separately).

Note: if a mixture of tray types is used, notice that trays with splices at the exterior of the tray do not fit on top of trays with splice modules, they only fit underneath.

2.4.3 Mounting kits & work stands

Name	Description	Class	MOQ	SPQ
FOSC-WORK-STAND	Work stand to keep all FOSC closures in horizontal position during installation.	C	1	1
FOSC-A/B-POLE-MOUNT	Plastic bracket for mounting A or B closure to pole or wall	A	1	1
FOSC-A/B-UNI-MOUNT-W	Metal bracket for mounting A or B closure onto a wall	B	1	1
FOSC-A/B-UNI-MOUNT-A	Metal bracket for mounting A or B closure aerially	C	10	1
FOSC-A/B-UNI-MOUNT-P	Metal bracket for mounting A or B closure onto a pole	C	10	4
FOSC-A/B-MOBRA	Bracket for mounting the A or B closure vertically on a wall	C	10	1
FOSC-400D-POLE-MOUNT	Bracket for mounting D5 closure on a pole or wall	C	10	1
FIST-UNI-MOUNT-W	Metal bracket for mounting D5 - D5/B closure onto a wall	C	10	1

Name	Description	Class	MOQ	SPQ
FOSC-DMARC-MOBRA	Bracket for mounting the D5/B closure on a wall	C	10	1

Consult the MOBRA ordering guide for a schematic overview.

2.4.4 Miscellaneous

Name	Description	Class	MOQ	SPQ
FOSC-A/B-O-RING-SEAL-KIT	Optional re-entry/repair kit with desiccant, O-ring, and cleaning tissues	C	10	1
FOSC-A/B-VAULT-BAG	Flame retardant bag to cover closure for vault applications	C	35	1
FOSC-A-SHIELD-CON-KIT	6 shield continuity wires + clamp + 5 wire connection clips	C	35	1
FOSC-D-O-RING-SEAL-KIT	Optional re-entry/repair kit with desiccant, O-ring, and cleaning tissues	C	10	1
FOSC-D-VAULT-BAG	Flame retardant bag to cover closure for vault applications	C	18	1

2.4.5 Installation kit components

Name	Description	Class	MOQ	SPQ
FISTV-E7100-1005	Silica gel for inside the closure, to be replaced after each re-entry (1 pc = 1 bag of 75g)	A	10	10

2.5 Tools

See the TOOLS ordering guide.

3 Product guide

3.1 Closure description

Dome

The dome is made from a polymer, ribbed for extra strength.

Base

The base provides the foundation for the splicing trays. A number of round ports (quantity depends on the closure size) and one oval port for cable entry/exit are provided in the base.



7N3K4456.JPG

Dome to base seal

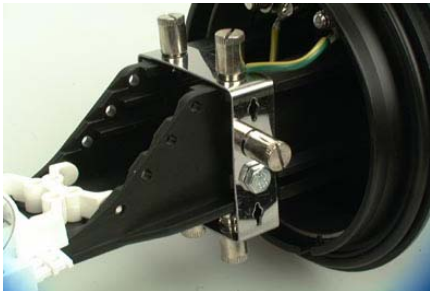
This seal consists of a mechanical clamp and a rubber O-ring.



GC2OG009.JPG

FOSC tray tower

A mounting bracket is provided onto which the splicing trays are hinged.



MIS007.JPG

Cable strength member fixation point

The central strength member of each individual cable can be attached at this point.



F4B6.JPG

Ground feed-through

A sealed grounding feed-through bolt can be pre-mounted in the base to connect metallic components to an external ground.



MIS012.JPG

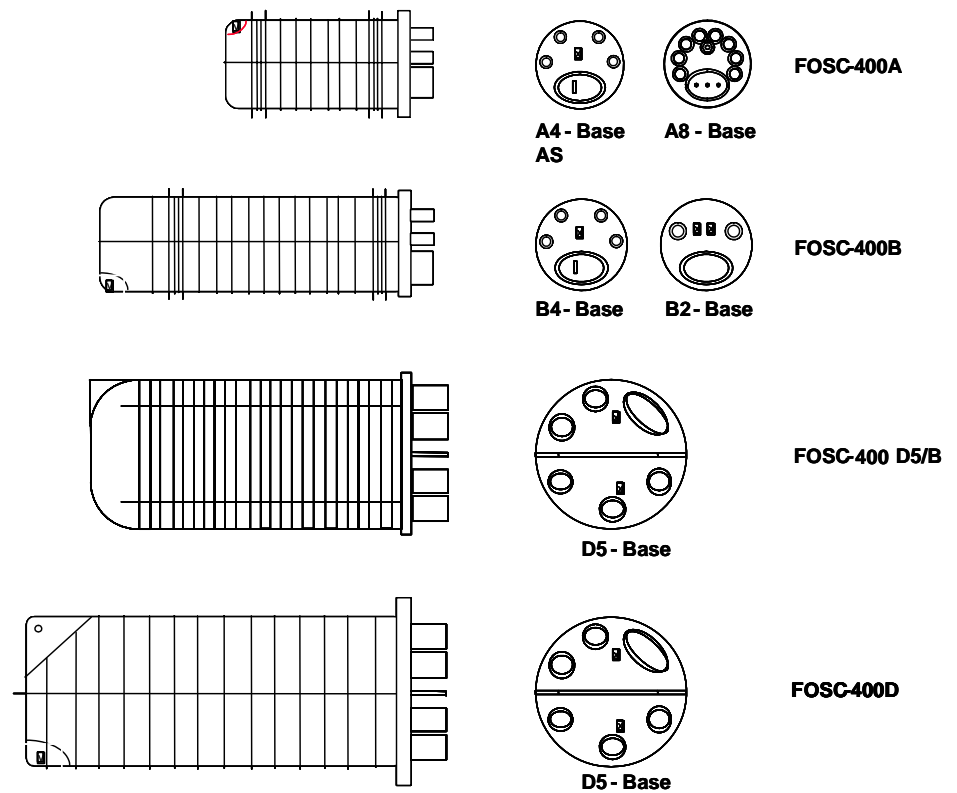


7N3K4455.JPG

Flash test valve

This is pre-mounted in the dome if pressure access is required.

3.2 Closure dimensions



V = Optional flash testing capability X = Optional grounding feed through lug(s).

Dimensions in mm	Closure size					
	AS/A4	A8	B4	B2	D5/B	D5
Total closure length	420	410	540	540	505	710
Closure outer diameter	183	183	183	183	267	267
including clamp	205	205	205	205	290	290

3.3 Closure capacity

3.3.1 General (a)

	Closure size						
	AS	A4	A8	B4	B2	D5/B	D5
FOSC tray capacity							
# FOSC trays (no storage basket)	12	2 / 3	4 / 8 (b)	4 / 6 (c)	4 / 6	12	8
# FOSC trays (with storage basket)	N.A.	2	4 / 8 (b)	4	4	N.A.	6 / 4 (d)
Splicing capacity							
Single fiber	72	48 / 72	96 / 48	96 / 144	96 / 144	288	768
Ribbon 12							1152
Cable ports							
1 oval port for 2 cables with Ø range each	10-25 mm	10-25 mm	10-25 mm	10-25 mm	10-25 mm	10-25 mm	10-25 mm
# round ports	4	4	8	4	2	5	5
cable Ø range of the round ports	5-19 mm	5-19 mm	5-10 mm	5-19 mm	5-28 mm	5-28 mm	5-28 mm

Notes:

- Tray capacity is based on 45 mm fusion splice protectors (such as SMOUV-1120-02).
- The A8 closure's capacity is 4 standard A trays or 8 slim trays, but it accepts as well a mixture of standard A and slim trays.
- B4 closure can initially be fitted with 6 trays. The loose tube storage capacity is very limited in this case (a few tubes can be stored in a plastic bag, consult the local sales engineer for more information). Adding to an installed standard 'B' closure a 5th and 6th tray is impossible.
B-closure with a capacity of up to 6 trays can be ordered (with up to 5 trays pre-installed), namestring becomes FOSC-400B4-XX-X/6-...
- 6 trays in case of a standard D-basket, 4 trays in case of a tall basket (see FOSC tray O.G. for basket info).

Please contact your local representative for detailed information.

3.3.2 Splicing trays

See the FOSC splicing trays ordering guide for characteristics and standard ordering information.

Note: if a mixture of tray types is used, notice that trays with splices at the exterior of the tray do not fit on top of trays with center splice modules or on top of splitter trays, they only fit underneath.

3.4 Accessories

3.4.1 Cable accessories

Tubular cable seal kit for round ports

FOSC-A-CSEAL-1NT (incl. strength member fixation) (for A4 and AS size)

FOSC-A8-CSEAL-1NT (incl. strength member fixation) (for A8 size)

FOSC-B/D-CSEAL-1NT (strength member fixation is premounted on the closure) (for B/D size)

Cable seal kit to seal cables in the round ports.

The seal kit diameter range accommodated is 5-32 mm. (5-25 mm for FOSC-A8 size)



SEA010.JPG

Tubular cold seal for round ports

FOSC-A8-CSEAL-COLD-8 (for A8 size only)

Cold seal for aerial or pedestal applications. 8 seals/kit., incl. strength member fixation.

Cable diameter range 3.5 – 10 mm.

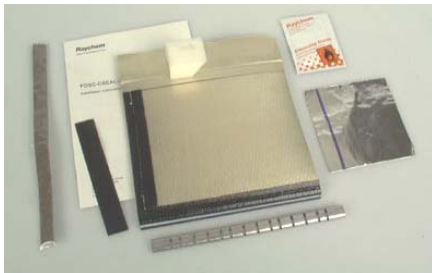


IMG_6111.JPG

Wraparound cable seal kit for round ports

FOSC-CSEAL-1NW (for all sizes)

This wraparound version is used in case of re-entry/repair. Diameter range 5-32 mm



SEA012.JPG

Tubular cable seal kit for oval ports

FOSC-A-CSEAL-2NT (incl. strength member fixation)

FOSC-B/D-CSEAL-2NT

Cable seal kit to seal two cables in oval outlet port.

The diameter range accommodated is 10-25 mm.

This seal is used when uncut fibers are stored in an optional basket.



SEA008.JPG

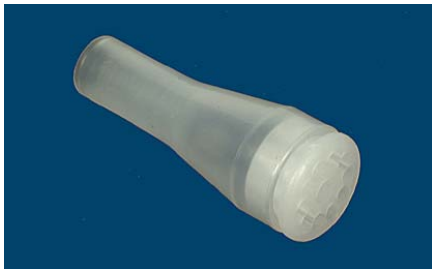
Wraparound cable seal kit for oval ports

FOSC-CSEAL-2NW (for all sizes)

A wraparound version of above sleeve is also available and is used in case of re-entry/repair.



SEA013.JPG



F4002.JPG

Slotted core/central core termination kit

FOSC-FUNNEL-X+1-KIT

This kit transforms a slotted or central core (OD = 8 mm) into a loose tube construction. Two different versions are available: with 5 x 2.8 mm or 10 x 1.8 mm outgoing transportation tubes, included in the kit.
(In the product name, X = 5 or 10)

3.4.2 Mounting kits & work stands



MB004.JPG

FOSC-WORK-STAND

This is a help tool to keep the closure in a horizontal position while working on it. All closure sizes can be installed.

3.4.3 Installation kit components



I&C034.JPG

Silica gel

FISTV-E7100-1005

Silica gel for inside the closure, to be replaced after each re-entry. 1 pc = 1 bag of 75g

TE Connectivity products deliver a competitive advantage by meeting stringent demands for performance and reliability. Innovative TE Connectivity components and systems are used in telecommunications, electronics, transportation, infrastructure and energy networks markets throughout the world.

Tyco Electronics Raychem bvba
Diestsesteenweg 692
B-3010 Kessel-Lo, Belgium
Tel.: 32-16-351 011
Fax: 32-16-351 697
www.te.com
www.telecomnetworks.com

TE (logo) and TE Connectivity are trademarks of the TE Connectivity group of companies and its licensors.

While TE Connectivity and its affiliates referenced herein have made every reasonable effort to ensure the accuracy of the information contained in this catalog, TE Connectivity cannot assure that this information is error free. For this reason, TE Connectivity does not make any representation or offer any guarantee that such information is accurate, correct, reliable or current. TE Connectivity reserves the right to make any adjustments to the information at any time. TE Connectivity expressly disclaims any implied warranty regarding the information contained herein, including, but not limited to, the implied warranties of merchantability or fitness for a particular purpose. TE Connectivity' only obligations are those stated in TE Connectivity' Standard Terms and Conditions of Sale. TE Connectivity will in no case be liable for any incidental, indirect or consequential damages arising from or in connection with, including, but not limited to, the sale, resale, use or misuse of its products. Users should rely on their own judgment to evaluate the suitability of a product for a certain purpose and test each product for its intended application.