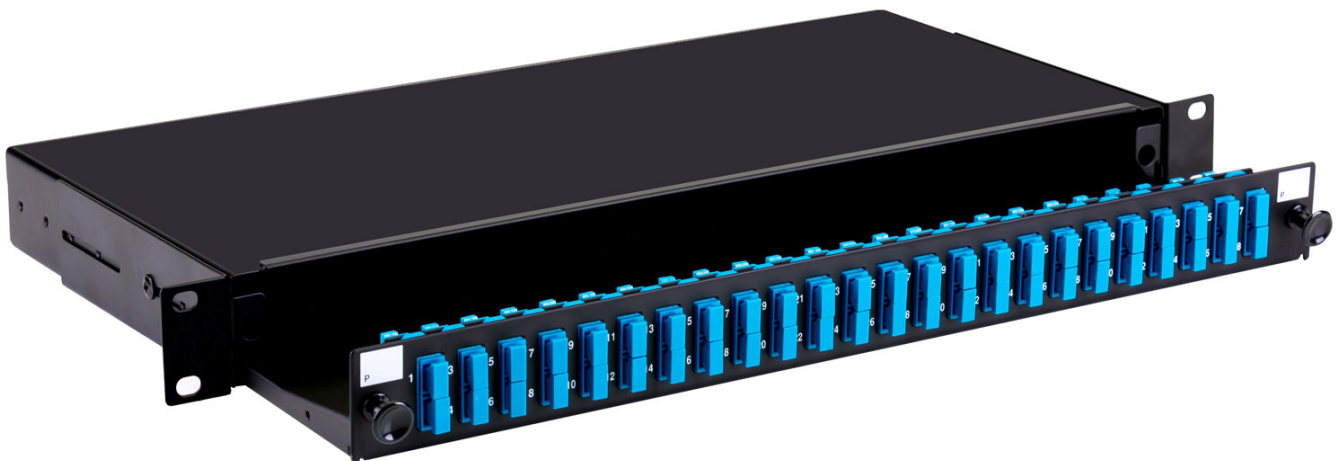


Fusion Sliding Patch Panel SC Singlemode - 8 Port

Product Images

Product Code: T70-0230

x 8



Short Description

A fibre optic patch panel with sliding tray to take up to 24 SC duplex fibre connectors. This panel is supplied loaded with 8 SC duplex singlemode adaptors (ie 16 port). The panel is also available unloaded or pre-loaded with 4, 8 or 24 duplex fibre adaptors and simple splice management.

This 1U panel has 4 x 10mm gland holes and 2 x 20mm gland holes for cable entry and is 200mm deep.

Specifications:

- Width - 48mm
- Depth - 200mm
- Height - 1U (44mm)
- Weight - 2.6kg fully loaded
- Cable entry - 4 x 10mm, 2 x 20mm gland holes
- Colour -Black

Description

A fibre optic patch panel with sliding tray to take up to 24 SC duplex fibre connectors. This panel is supplied loaded with 8 SC duplex singlemode adaptors (ie 16 port). The panel is also available unloaded or pre-loaded with 4, 8 or 24 duplex fibre adaptors and simple splice management.

This 1U panel has 4 x 10mm gland holes and 2 x 20mm gland holes for cable entry and is 200mm deep.

Specifications:

- Width - 48mm
- Depth - 200mm
- Height - 1U (44mm)
- Weight - 2.6kg fully loaded
- Cable entry - 4 x 10mm, 2 x 20mm gland holes
- Colour -Black