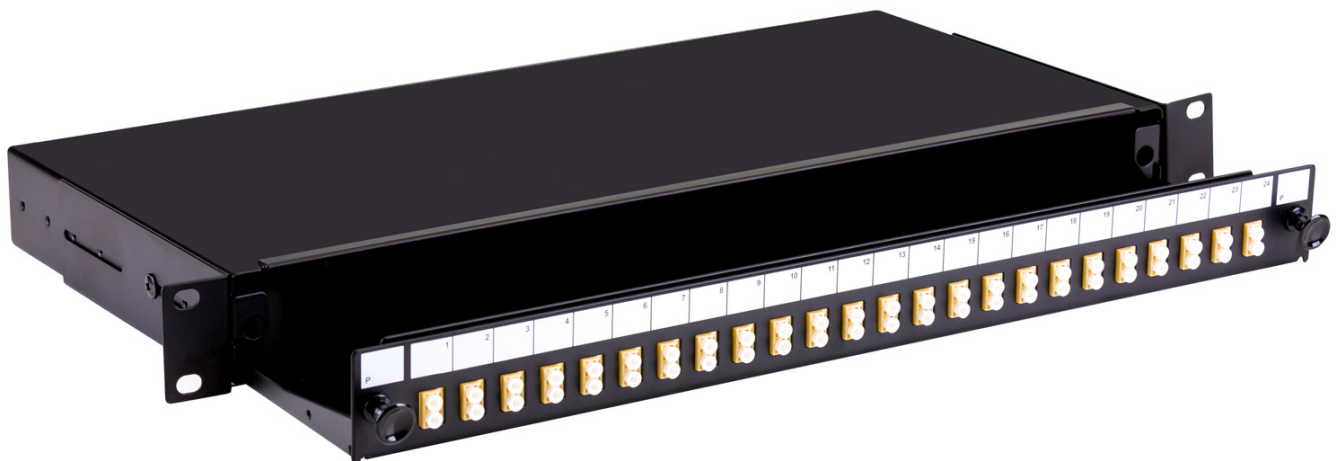
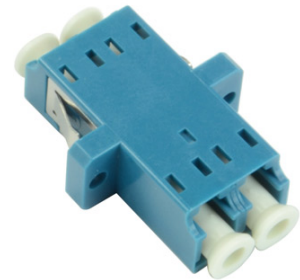


# Fusion Sliding Patch Panel LC Singlemode - 24 Adaptor

Product Images

Product Code: T70-0222

x24



## Short Description

A fibre optic patch panel with sliding tray to take up to 24 SC or LC fibre connectors. This panel is supplied loaded with 24 LC singlemode adaptors

This 1U panel has 4 x 10mm gland holes and 2 x 20mm gland holes for cable entry and is 200mm deep.

The panel is also available unloaded or pre-loaded with 4, 8 or 12 fibre adaptors and simple splice management.

**Specifications:**

- Width - 48mm
- Depth - 200mm
- Height - 1U (44mm)
- Weight - 2.6kg fully loaded
- Cable entry - 4 x 10mm, 2 x 20mm gland holes
- Colour -Black

## Description

---

A fibre optic patch panel with sliding tray to take up to 24 SC or LC fibre connectors. This panel is supplied loaded with 24 LC singlemode adaptors

This 1U panel has 4 x 10mm gland holes and 2 x 20mm gland holes for cable entry and is 200mm deep. The panel is also available unloaded or pre-loaded with 4, 8 or 12 fibre adaptors and simple splice management.

**Specifications:**

- Width - 48mm
- Depth - 200mm
- Height - 1U (44mm)
- Weight - 2.6kg fully loaded
- Cable entry - 4 x 10mm, 2 x 20mm gland holes
- Colour -Black