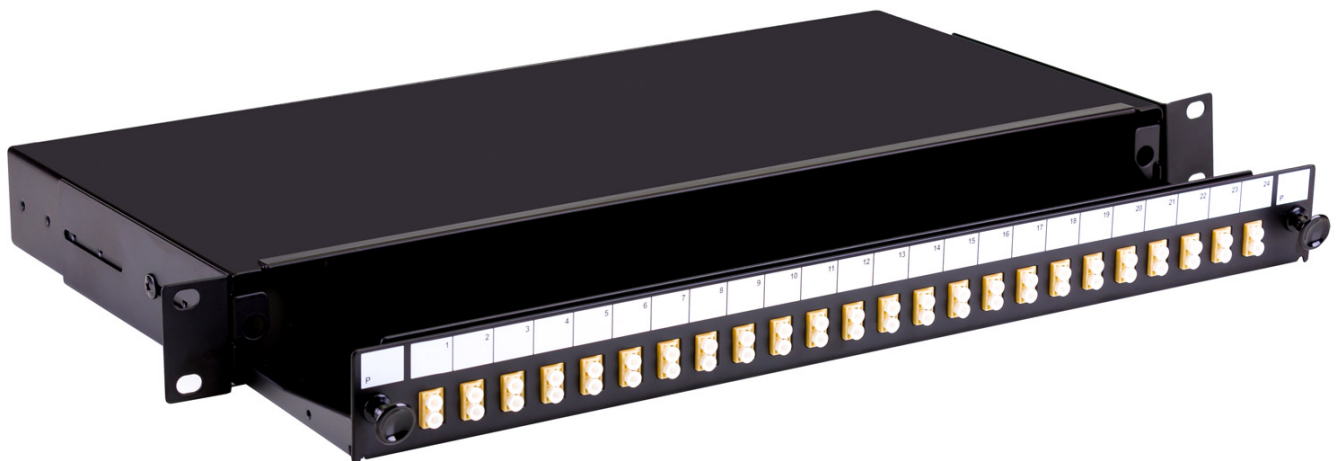


Fusion Sliding Patch Panel SC Singlemode - 4 Adaptor

Product Images

Product Code: T70-0209

x 4



Short Description

A fibre optic patch panel with sliding tray to take up to 24 SC or LC fibre connectors. This panel is supplied loaded with 4 SC singlemode adaptors

This 1U panel has 4 x 10mm gland holes and 2 x 20mm gland holes for cable entry and is 200mm deep.

The panel is also available unloaded or pre-loaded with 8, 12 or 24 fibre adaptors and simple splice management.

Specifications:

- Width - 48mm
- Depth - 200mm
- Height - 1U (44mm)
- Weight - 2.6kg fully loaded
- Cable entry - 4 x 10mm, 2 x 20mm gland holes
- Colour -Black

Description

A fibre optic patch panel with sliding tray to take up to 24 SC or LC fibre connectors. This panel is supplied loaded with 4 SC singlemode adaptors

This 1U panel has 4 x 10mm gland holes and 2 x 20mm gland holes for cable entry and is 200mm deep. The panel is also available unloaded or pre-loaded with 8, 12 or 24 fibre adaptors and simple splice management.

Specifications:

- Width - 48mm
- Depth - 200mm
- Height - 1U (44mm)
- Weight - 2.6kg fully loaded
- Cable entry - 4 x 10mm, 2 x 20mm gland holes
- Colour -Black