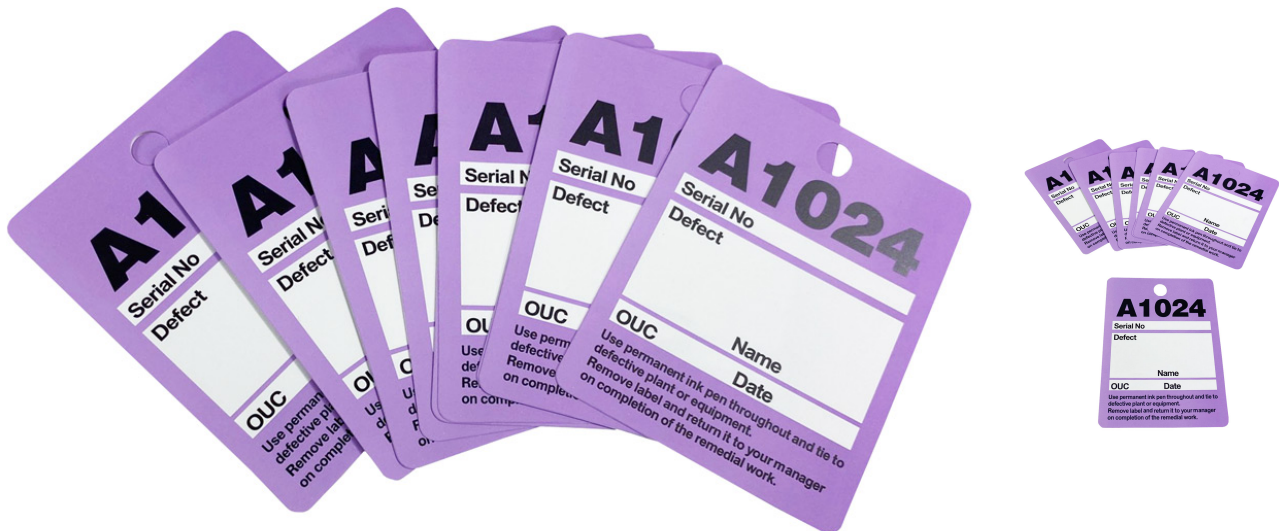


# Defective Pole Label A1024 Lilac - Pack of 10

Product Images

Product Code: S83-1915



## Short Description

The Mills A1024 label is used to identify and record defective poles. The label is easily affixed to the pole

using Pin Steel No 2.

Also available in yellow C00-1787

Supplied in packs of 10.

Ref 005381

## Description

---

The Mills A1024 label is used to identify and record defective poles. The label is easily affixed to the pole using Pin Steel No 2.

Also available in yellow C00-1787

Supplied in packs of 10.

Ref 005381