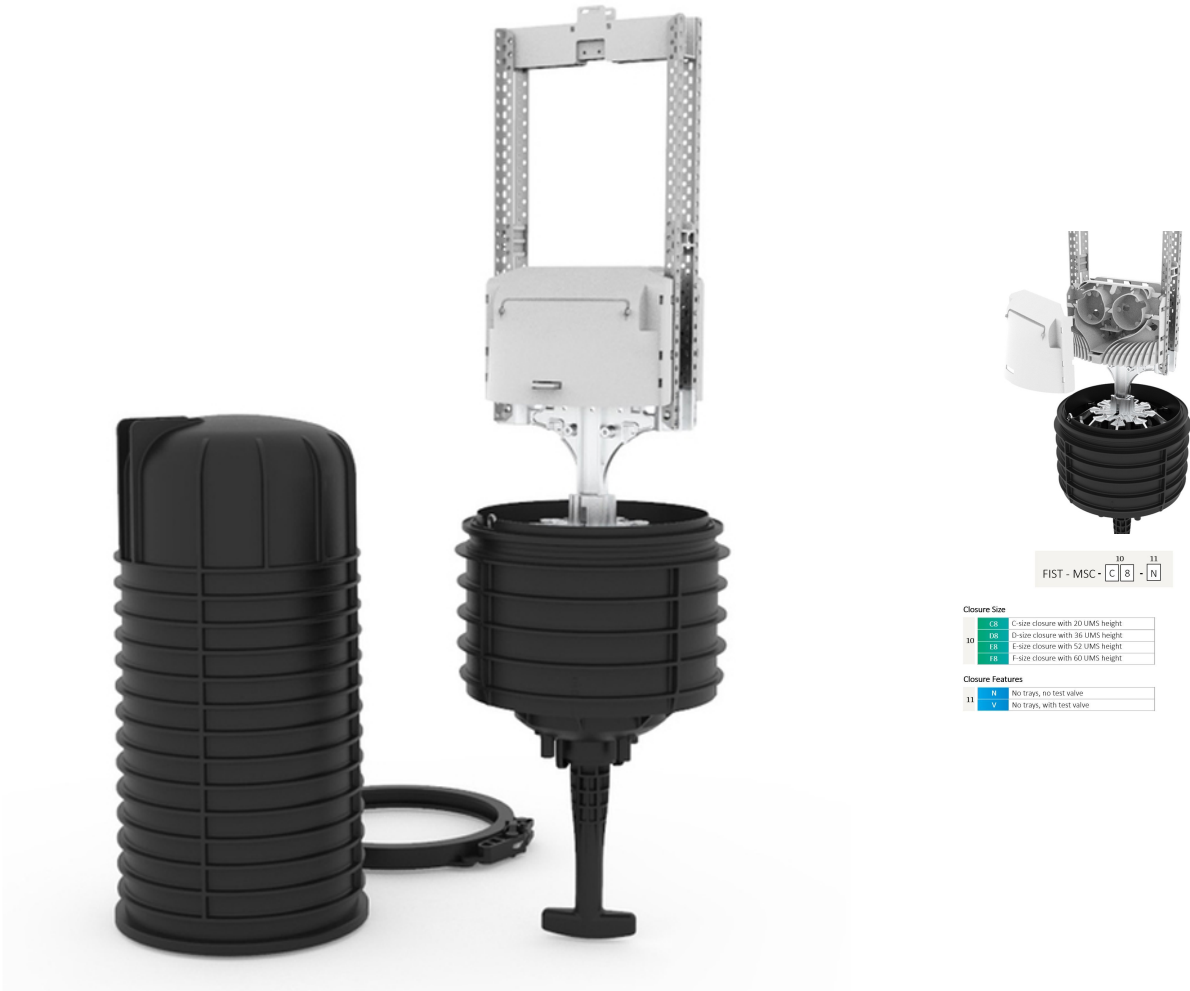


# CommScope FIST MSC Modular Splice Closure

## Product Images

Product Code: FIST-MSC



## Short Description

Single ended o-ring sealed dome closure for high capacity splicing in a versatile and modular build

Transient free and flexible FIST fibre management for optimised fibre routing and cable storage  
Fully removable base for easy cable access during installation and provisioning  
Compatible with high end environmental specifications for aerial, pedestal, underground or direct buried applications  
Superior gel sealing technology incorporated in interchangeable and fully wrap around gel segments  
Toolless and intuitive design in cable seals and cable attachments  
Compatible with a wide range of fibre cable sizes and types

## Description

---

FIST™ Modular Splice Closure: adapting to the constantly-changing needs of your network

To keep pace with subscriber demands, network providers today need real deployment efficiencies. The new FIST delivers versatility and efficiency by supporting many network applications with simplified planning and logistics and with ease of installation.

### **FIST fibre management**

- Transient-free, modular, flexible fibre management
- FIST single-circuit and single-element splice trays
- Up to 1248 splices with standard domes: expandable splice capacity with extra collars
- Storage area for looped cable
- Compatible with all fibre types: G.652D and G.657 series

### **High-performance closure**

- Uses FIST closure materials
- Base is completely removable, with easy access during installation and provisioning
- Tool-less base install: simply turn and lock pin
- Underground, ground-level, and aerial use
- IP68; 5mWH; 40 kPa

### **Superior gel seal**

- Fully wraparound, 100 percent mechanical seal
- Eight interchangeable base segments
- Click and snap with no screws required
- Field and factory installable

- Easy day two or repair cable installation
- Easy release of gel segments by the un-triggering of the handle

### **Best-in-class cable fixation**

- Universal termination for cables from 1-27 mm
- Full wraparound and remote cable preparation and cable termination unit (CTU) installation
- Integrated grounding feature for easy grounding wire attachment
- Possible to open gel segments with cable retention in place
- Only one hex wrench needed

**This is a configurable product. Please contact sales for further details.**