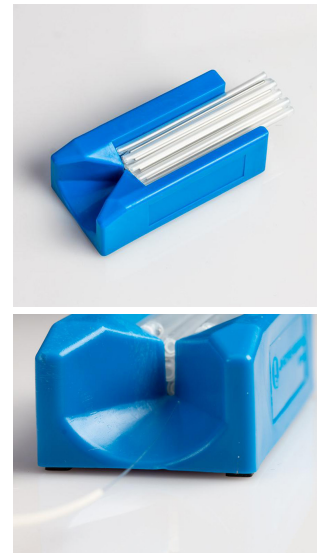


Protection Sleeve Insertion Tool

Product Images

Product Code: E00-1759



Short Description

Time saving device, ideal for aligning fibre to the entrance holes of splice protectors.

Description

Loading a splice protector onto a fibre can be tedious, even for the most experienced technicians. Plus, if they have physical impairments such as poor eyesight then it can become nearly impossible.

Designed to make loading protection sleeves onto fibre quick and easy, the PSI-15 protection sleeve insertion tool is ideal for aligning fibre to the holes of protection sleeves and is a real timesaver.

Features:

Conical fibre feed surface guides the fibre directly to the protection sleeve

Facilitates fibre loading by providing a guide for the fibre to load right into the protection sleeve

Holds up to 15 protection sleeves, each ranging from 1.57" to 2.36" (40 mm to 60 mm) long

When one sleeve is loaded and removed, another automatically falls into place

Compact and lightweight design for easy storage and portability