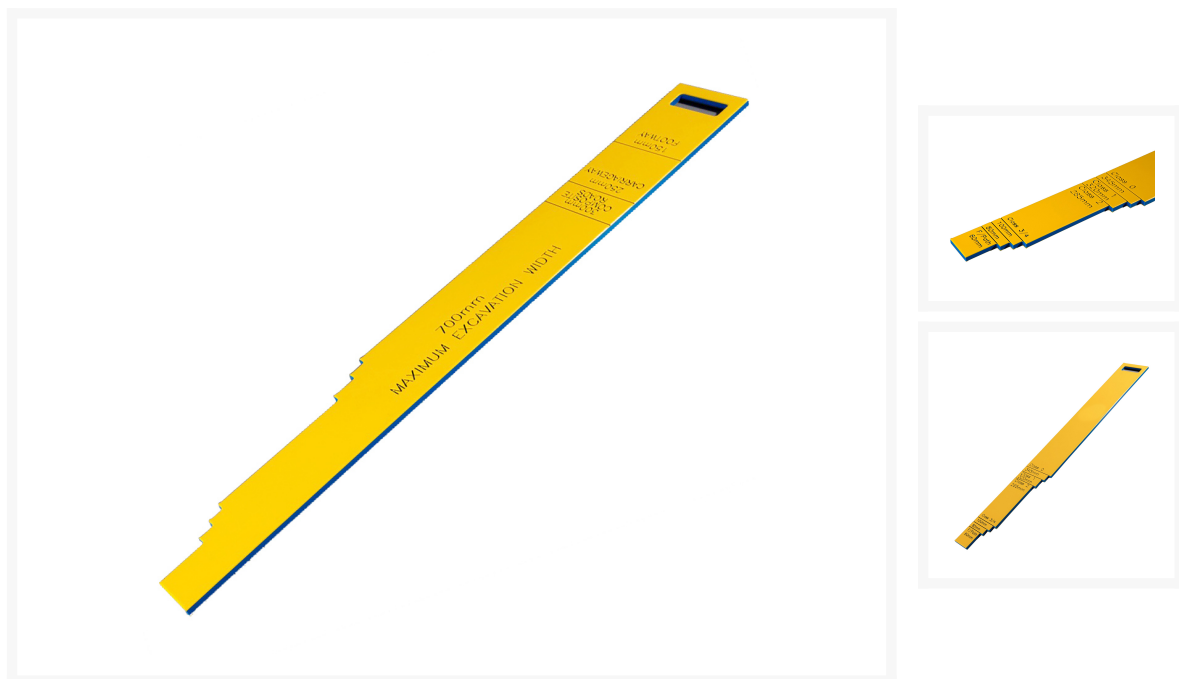

Reinstatement Depth Gauge

Product Images

Product Code: K70-1691



Short Description

Used to complete quick and easy compliance checks of reinstatement after backfill activities are completed.

A simple and efficient product, manufactured from polyethylene plastic, that has predetermined engraved depths for carriageways and footpaths.

As each classification of carriageway has a predetermined depth of blacktop, the depth gauge incorporates these measurements in a stepped system that allows the operative to measure against backfill to ensure reinstatement is correct.

Operatives can also use the gauge to ensure that street furniture such as road plates and trench covers have been placed correctly over open excavations. This helps to ensure that sites are safe for pedestrians and vehicles.

Features

Correct reinstatement depths for footpaths and carriageways

Used to complete quick and easy compliance checks of reinstatement after backfill activities are completed.

A simple and efficient product, manufactured from polyethylene plastic, that has predetermined engraved depths for carriageways and footpaths.

Description

Used to complete quick and easy compliance checks of reinstatement after backfill activities are completed.

A simple and efficient product, manufactured from polyethylene plastic, that has predetermined engraved depths for carriageways and footpaths.

As each classification of carriageway has a predetermined depth of blacktop, the depth gauge incorporates these measurements in a stepped system that allows the operative to measure against backfill to ensure reinstatement is correct.

Operatives can also use the gauge to ensure that street furniture such as road plates and trench covers have been placed correctly over open excavations. This helps to ensure that sites are safe for pedestrians and vehicles.

Features

Correct reinstatement depths for footpaths and carriageways

Used to complete quick and easy compliance checks of reinstatement after backfill activities are completed.

A simple and efficient product, manufactured from polyethylene plastic, that has predetermined engraved depths for carriageways and footpaths.