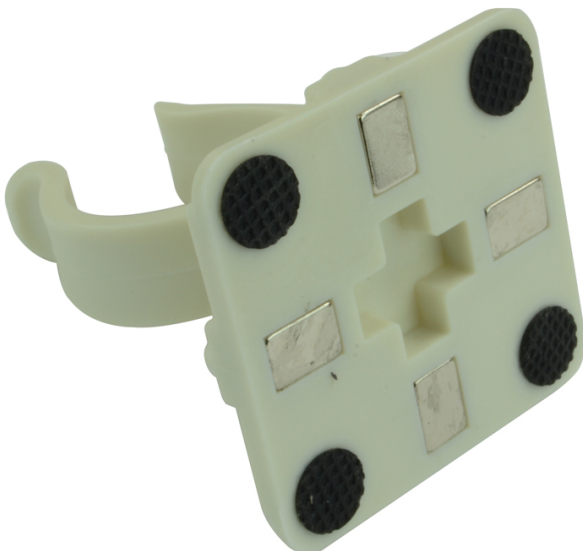


# Millslite LED Torch Worklight and Magnetic Holder

Product Images

Product Code: M99-7559





## Short Description

---

Millslite LED Torch Worklight and Magnetic Holder comprising:

### **M99-6916 Millslite Combined LED Torch and Work Light**

Millslite Combined LED Torch And Worklight. This 2 in 1 worklight features a powerful Cree LED torch and COB work light. The Millslite is manufactured from high quality corrosion resistant and durable aluminium. This work light torch is an essential addition to all toolkits and benefits from a strong end fitted magnet, making it ideal for hands free use. The torch is powered by 4 x AAA batteries (not included), and features a 'glow in the dark' power button for ease of operation.

Length 170mm with a diameter of 43mm, weight 280g

### **M99-6998 Mills Magnetic Torch Holder**

Designed to be used in conjunction with the Mills M99-6916 'Millslite LED Torch and Worklight', the holder is ideal for accurate positioning on most magnetic surfaces and benefits from 4 friction pads which prevent damage to the work area and also provide additional grip on sheer finishes.

This magnetic clamp was originally designed in conjunction telecom providers for use in exchanges and street cabinets, allowing light to be directed into difficult to access positions.

The base of the clamp measures 50mm x 50mm and the product is manufactured in fluorescent (glow in the dark) nylon

## Description

---

Millslite LED Torch Worklight and Magnetic Holder comprising:

### **M99-6916 Millslite Combined LED Torch and Worklight**

Millslite Combined LED Torch And Worklight. This 2 in 1 worklight features a powerful Cree LED torch and COB work light. The Millslite is manufactured from high quality corrosion resistant and durable aluminium. This work light torch is an essential addition to all toolkits and benefits from a strong end fitted magnet, making it ideal for hands free use. The torch is powered by 4 x AAA batteries (not included), and features a 'glow in the dark' power button for ease of operation.

Length 170mm with a diameter of 43mm, weight 280g

### **M99-6998 Mills Magnetic Torch Holder Clip**

Designed to be used in conjunction with the Mills M99-6916 'Millslite LED Torch and Worklight', the holder is ideal for accurate positioning on most magnetic surfaces and benefits from 4 friction pads which prevent damage to the work area and also provide additional grip on sheer finishes.

This magnetic clamp was originally designed in conjunction telecom providers for use in exchanges and

street cabinets, allowing light to be directed into difficult to access positions.

The base of the clamp measures 50mm x 50mm and the product is manufactured in fluorescent (glow in the dark) nylon