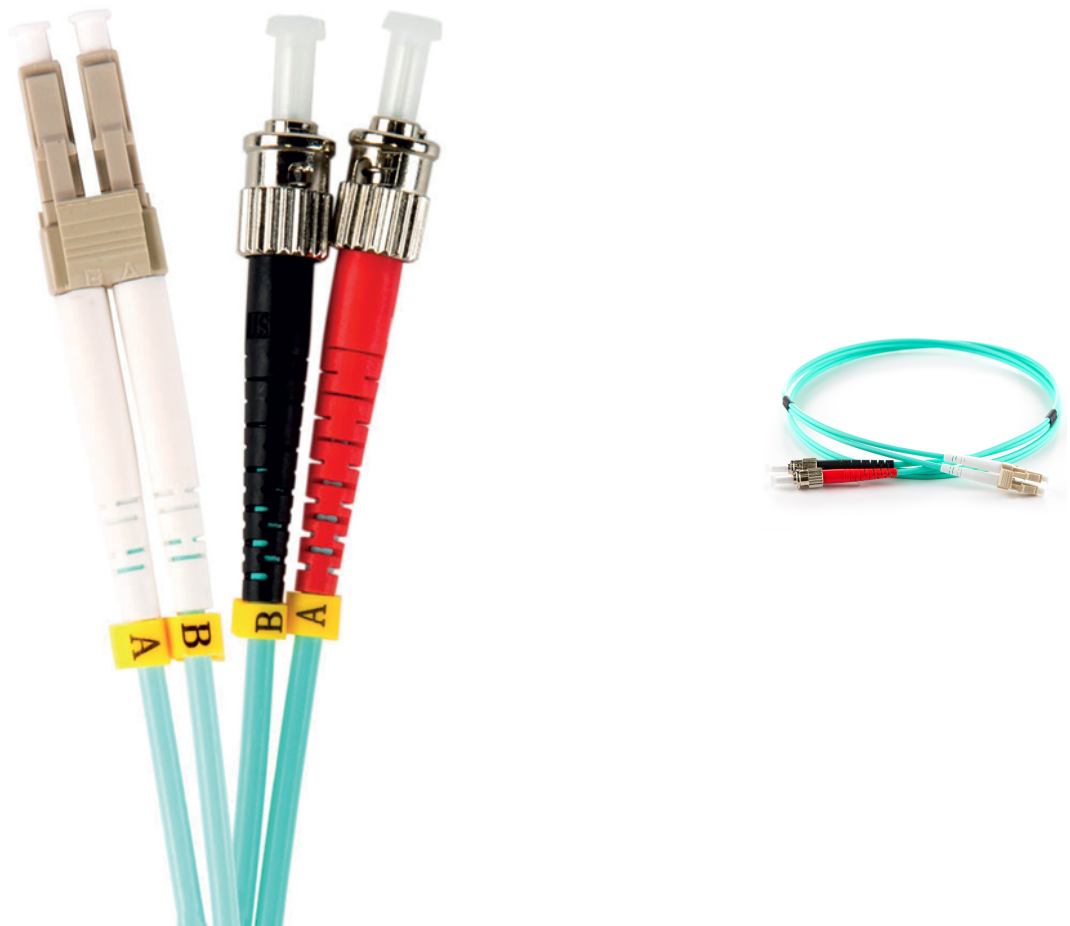


LC-ST Multimode Duplex Fibre Patch Cord OM4 50/125um 3m

Product Images

Product Code: T70-5512



Short Description

Duplex multimode OM4 50/125um fibre cable terminated with LC and ST connectors. Length 3m

Description

Manufactured using 50µm multimode fibre optimised for the use with 850nm VCSELS (vertical cavity surface emitting lasers), OM4 multimode patch cords are used particularly in 10, 40 and 100 Gb/s applications, where the transmission distances and higher bandwidth requirements have dictated a need for a higher performance but cost-effective multimode system.

Although not a replacement of OM3 systems, OM4, which is backward compatible with OM3 systems, provides an additional insertion loss margin to help compensate for less than ideal cabling installations and a greater reach at higher bandwidths at an overall cost that remains less than OS2 singlemode systems.

All assemblies are fully tested prior to delivery and supplied with test results.

OM4 multimode patch cords are supplied with 3mm (for additional ruggedising) aqua LSZH cable jacket as standard.

Applications

- Data centres
- Storage area networks
- LAN/Enterprise
- High performance computing centres
- Central offices
- For use in 40 -100 Gb/s networks >100m indicative link length at 850nm (SR) wavelength
- For use in 10 Gb/s networks >300m indicative link length at 850nm (SR) wavelength
- For use in 1 Gb/s networks >1000m indicative link length at 850nm (SX) wavelength

Features

- 850nm laser optimised
- LSZH - Low smoke zero halogen, aqua jacket
- 900µm tight buffer, 3mm simplex and duplex cable
- OM4 fibre conforms to or exceeds all relevant ISO/IEC, TIA/EIA and ITU standards
- All patch cords come with a UPC polished connector end face as standard

Fibre Specification

Attenuation (db/km) ≤ 2.4 @ 850nm / ≤ 0.6 @ 1300nm

Overfilled Modal Bandwidth (MHz x km) $\geq 3500 @ 850\text{nm} / \geq 500 @ 1300\text{nm}$

Effective Modal Bandwidth (MHz x km) $\geq 4700 @ 850\text{nm}$

Application Support Distance on: 40 and 100 Gigabit Ethernet -SR (m) 150 @ 850nm #

10 GBase - SR (m) 550 @ 850nm

1000 Base - SX (m) 1100 @ 850nm

Cable Specification

Cable Material LSZH

Strength Member Aramid

Crush (N/100mm) 1000

Tensile (N) 120

Operating temperature (°C) -20 to 60

Colour: Aqua

Length: 3m