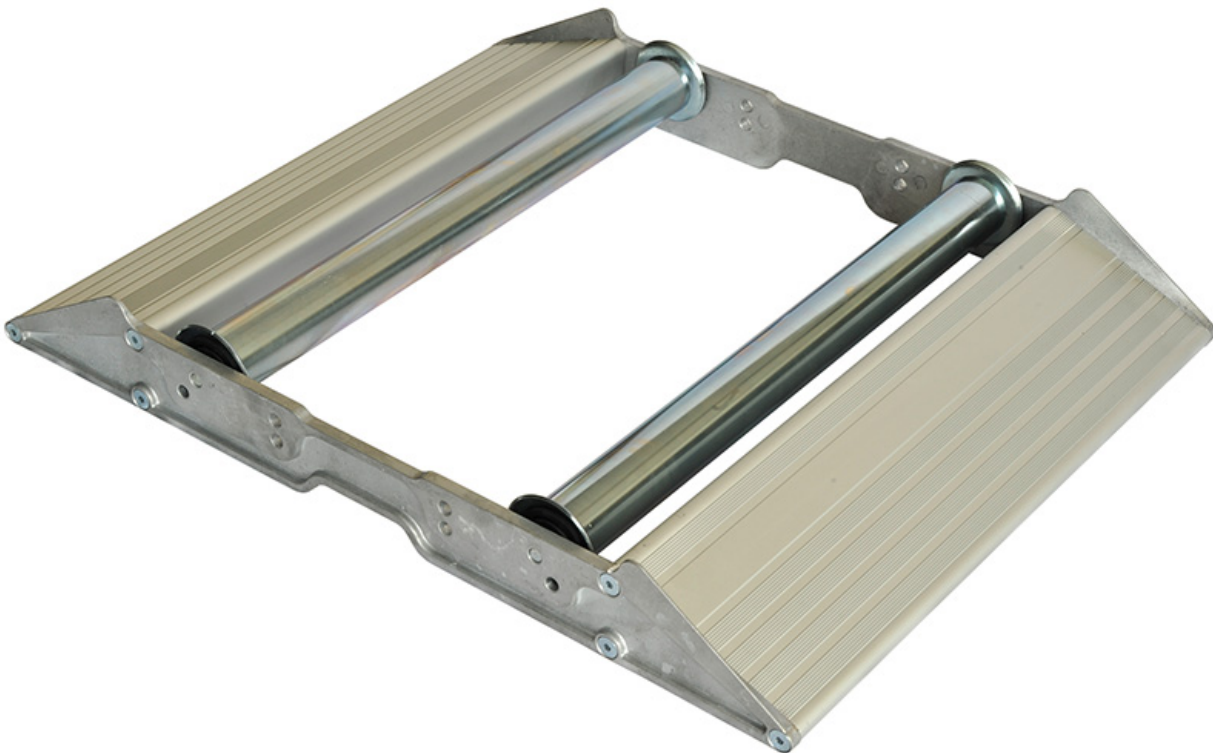


Mills Standard Aluminium Cable Roller Stand

Product Images

Product Code: S03-6600



Short Description

Cable drum unreeling frame in light alloy. Suitable for a safe and fast unrolling of cable drums. The sturdy frame is manufactured in an aluminium alloy structure, with galvanized steel revolving rollers. The position of the revolving rollers can be adjusted in order to host drum of cables with \varnothing from 200 mm to 700 mm. New anti-sliding ramps with minimum incline angle include lateral guide devices to contain the drum to enable safe and easy drum positioning on the unrolling frame

- Sturdy yet light construction
 - Adjustable rubber supports
 - Re-positioning galvanized steel rollers with spring closing device
 - Ramps with minimum angle of inclination, designed for easy and safe loading
 - Anti-sliding ramps
 - Supplied assembled and includes operating guide.
-
- Minimum reel diameter 200mm
 - Maximum reel diameter 700mm
 - Maximum reel width 515mm
 - Maximum reel weight 200kg

Product weight: 8kg

Supersedes the discontinued S00-3009.

Description

Cable drum unreeling frame in light alloy. Suitable for a safe and fast unrolling of cable drums. The sturdy frame is manufactured in an aluminium alloy structure, with galvanized steel revolving rollers. The position of the revolving rollers can be adjusted in order to host drum of cables with \varnothing from 200 mm to 700 mm. New anti-sliding ramps with minimum incline angle include lateral guide devices to contain the drum to enable safe and easy drum positioning on the unrolling frame

- Sturdy yet light construction
- Adjustable rubber supports
- Re-positioning galvanized steel rollers with spring closing device
- Ramps with minimum angle of inclination, designed for easy and safe loading
- Anti-sliding ramps
- Supplied assembled and includes operating guide.
- Minimum reel diameter 200mm
- Maximum reel diameter 700mm
- Maximum reel width 515mm
- Maximum reel weight 200kg

Product weight: 8kg

Supersedes the discontinued S00-3009.

Ref: 83876