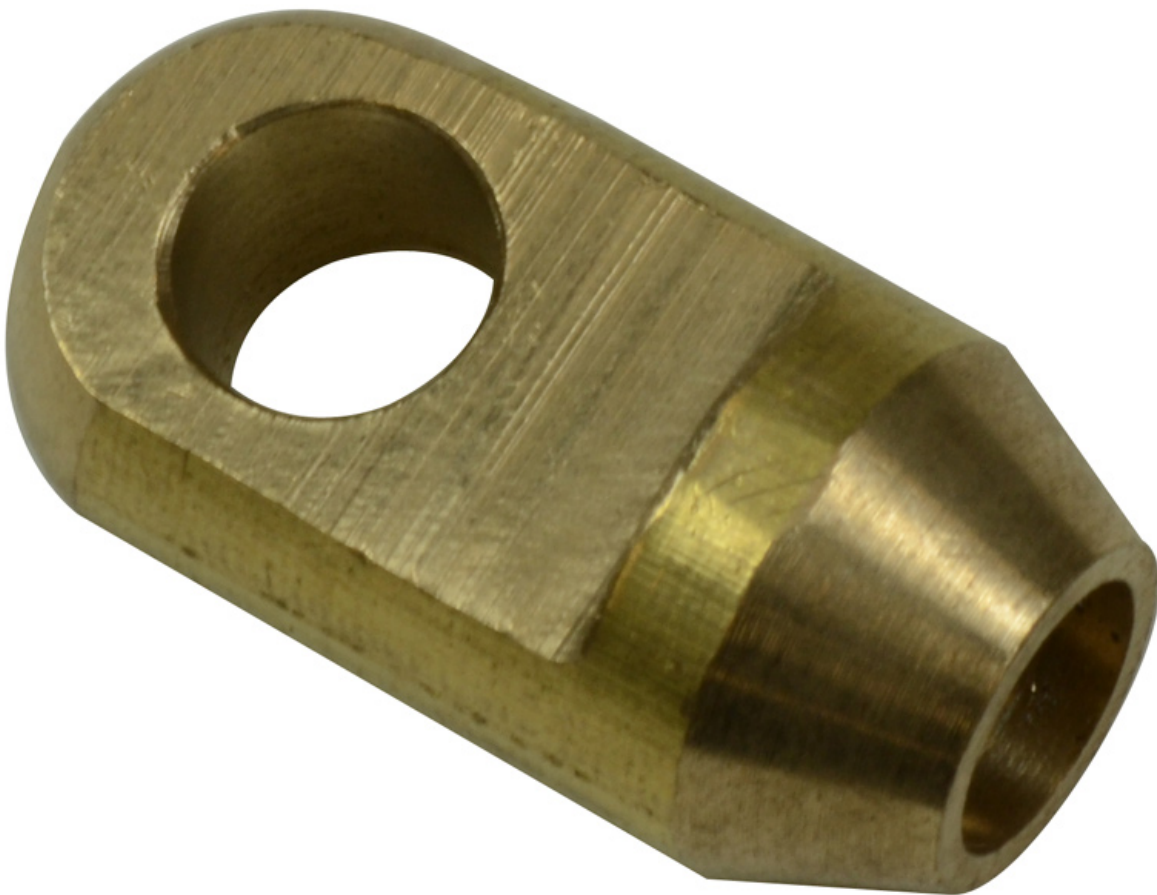


Mills Bullet End for 4.5mm & 6mm Cobra Rods

Product Images

Product Code: S13-1380



Short Description

Threaded tip which guides the rod through the duct, the eye allows a pulling rope to be attached to the rod – Suitable for 4.5 and 6mm rods

Formerly S00-1380

Description

Threaded tip which guides the rod through the duct, the eye allows a pulling rope to be attached to the rod – Suitable for 4.5 and 6mm rods

Formerly S00-1380