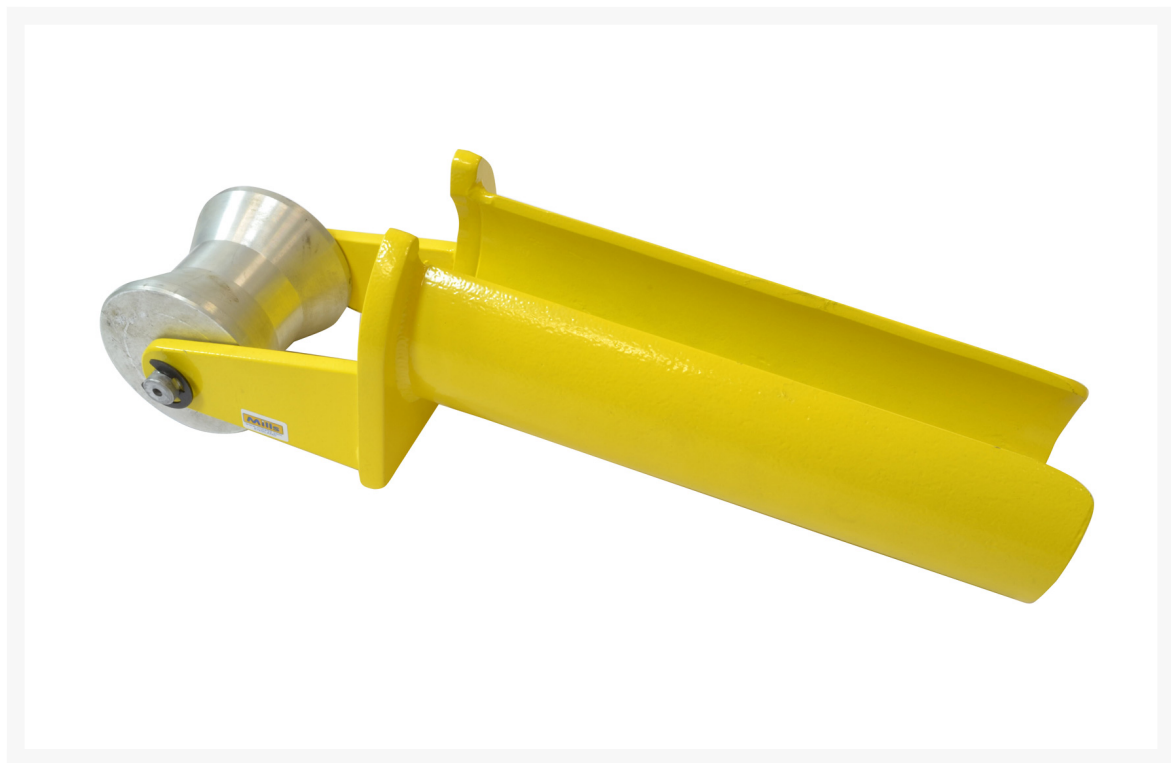

Mills Cabling Guide 17A

Product Images

Product Code: S13-1238



Short Description

Used to guide standard cabling ropes and steel wire in or out of duct mouths, typically BT Duct 54.

This Mills cabling guide comprises an aluminium roller 75mm width x 75mm Diameter and will fit all ducts with an internal diameter of more than 82mm

Dimension 360mm (L) x 110mm (W) x 120mm (H)

Formerly S00-1238

Description

Used to guide standard cabling ropes and steel wire in or out of duct mouths, typically BT Duct 54.

This Mills cabling guide comprises an aluminium roller 75mm width x 75mm Diameter and will fit all ducts with an internal diameter of more than 82mm

Dimension 360mm (L) x 110mm (W) x 120mm (H)

Formerly S00-1238