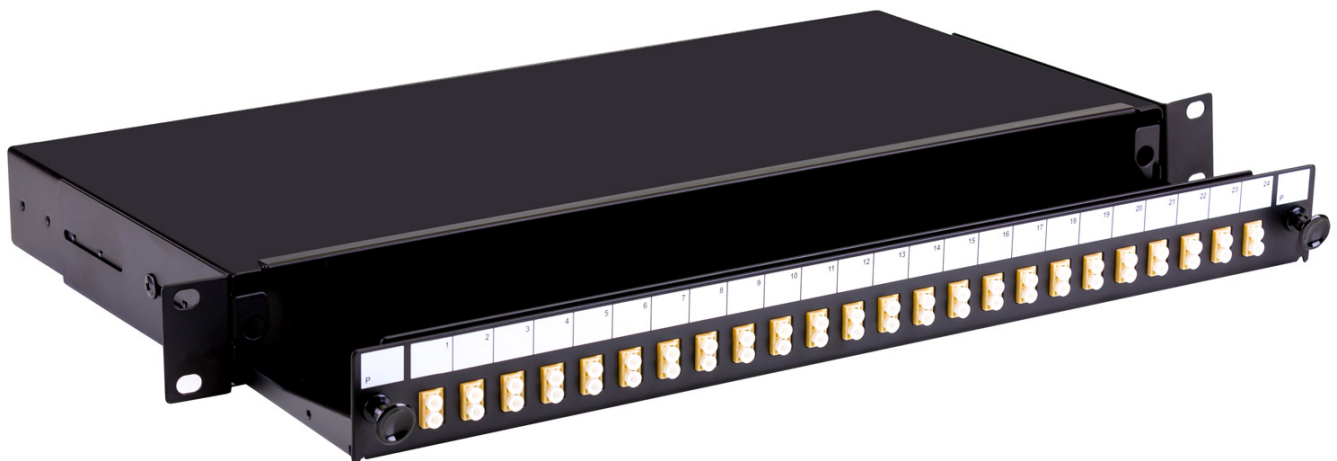


Fusion Sliding Patch Panel SC Multimode - 12 Adaptor

Product Images

Product Code: T70-0206

x12



Short Description

A fibre optic patch panel with sliding tray to take up to 24 SC or LC fibre connectors. This panel is supplied loaded with 12 SC multimode adaptors

This 1U panel has 4 x 10mm gland holes and 2 x 20mm gland holes for cable entry and is 200mm deep.

The panel is also available unloaded or pre-loaded with 4, 8 or 24 fibre adaptors and simple splice management.

Specifications:

- Width - 48mm
- Depth - 200mm
- Height - 1U (44mm)
- Weight - 2.6kg fully loaded
- Cable entry - 4 x 10mm, 2 x 20mm gland holes
- Colour -Black

Description

A fibre optic patch panel with sliding tray to take up to 24 SC or LC fibre connectors. This panel is supplied loaded with 12 SC multimode adaptors

This 1U panel has 4 x 10mm gland holes and 2 x 20mm gland holes for cable entry and is 200mm deep. The panel is also available unloaded or pre-loaded with 4, 8 or 24 fibre adaptors and simple splice management.

Specifications:

- Width - 48mm
- Depth - 200mm
- Height - 1U (44mm)
- Weight - 2.6kg fully loaded
- Cable entry - 4 x 10mm, 2 x 20mm gland holes
- Colour -Black