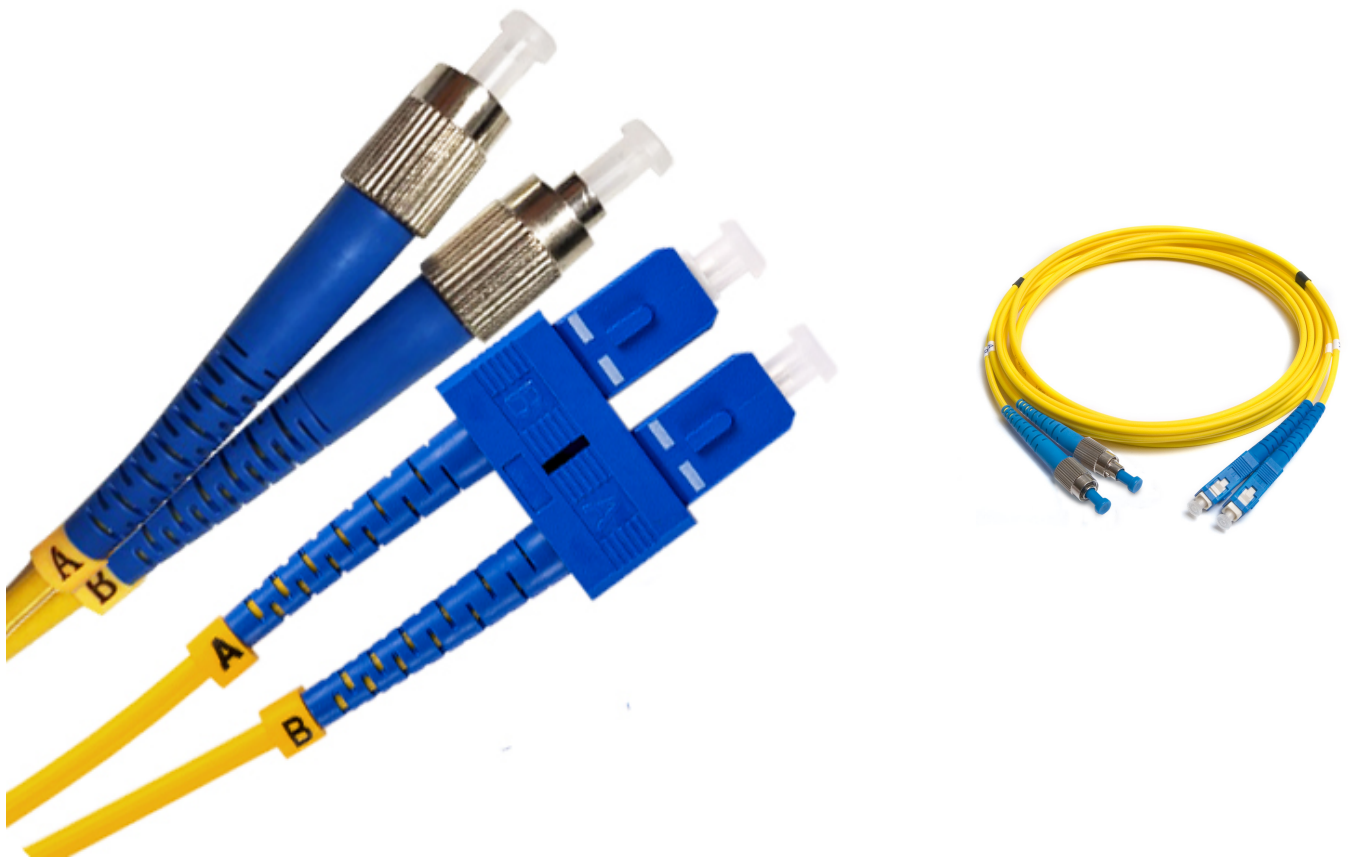


# FC-SC Singlemode Duplex Patch Cord OS2 9/125 1m

Product Images

Product Code: T70-0122



## Short Description

A singlemode 9/125um 1m patch cord terminated with FC to SC connectors

## Description

---

OS2 singlemode fibre optic patch cords are used to connect longer distance networks, between buildings and campuses and in long-distance metropolitan and access telecoms and CATV networks.

All assemblies are fully tested prior to delivery and supplied with test result.

OS2 singlemode patch cords are supplied using 3mm (for additional ruggedising) cable with a yellow LSZH cable jacket as standard.

### Applications

- Data Centres
- LAN/Enterprise
- Metropolitan and access networks
- FTTH
- CATV
- Transmission, switch and test equipment

### Features

- LSZH - Low smoke zero halogen, yellow jacket
- 900µm tight buffer, 3mm simplex and duplex cable
- Supplied with UPC polished connector end face as standard
- OS2 fibre conforms to or exceeds all relevant ISO/IEC, TIA/EIA and ITU standards

### Fibre Specification

Attenuation (db / km)  $\leq 0.32 @ 1310\text{nm} / \leq 0.18 @ 1550\text{m}$

Chromatic Dispersion (ps/nm=km)  $1285 - 1340 \geq -3.4 \leq 3.4$   $1550\text{nm} \leq 1816$   $25\text{nm} \leq 22$  Zero

Dispersion Wavelength (nm)  $1312 \pm 22$

### Cable Specification

Cable Material LSZH

Strength Member Aramid

Crush (N/100mm) 1000

Tensile (N) 120

Operating temperature (°C) -20 to 60

### **Connector Specification**

IL Max/Master (db) (Acceptance)  $\leq$  0.25

Av./Random (db)  $\leq$  0.20

Return Loss  $\geq$  55

**Colour: Yellow**

**Length: 1m**