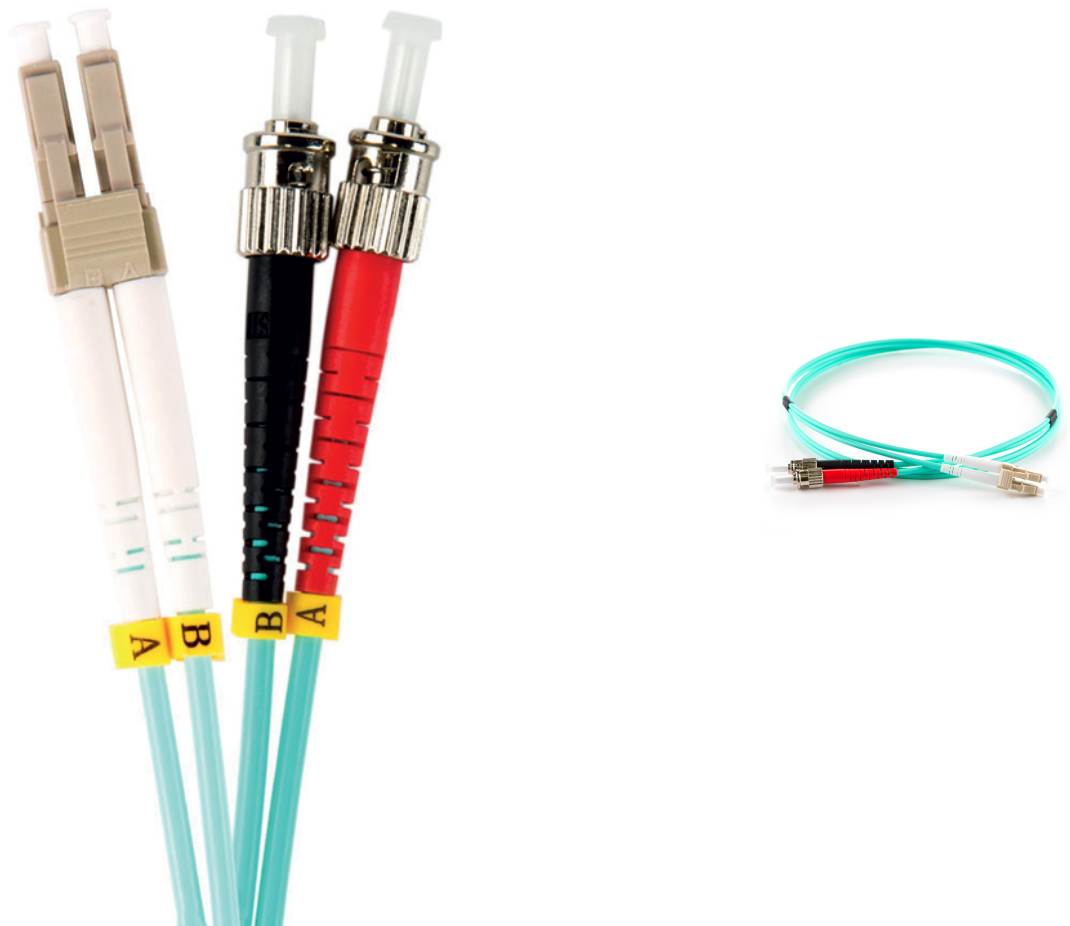


# LC-ST Multimode Duplex Fibre Patch Cord OM3 50/125um 2m

Product Images

Product Code: T70-0091



## Short Description

Duplex multimode OM3 50/125um fibre cable terminated with LC and ST connectors. Length 2m

1

## Description

---

Manufactured using 50µm multimode fibre optimised for the use with 850nm VCSELS (vertical cavity surface emitting lasers), OM3 multimode patch cords are used particularly in 1 Gb/s, 10 Gb/s and higher bandwidth applications over shorter distances.

Compatible with higher performance OM4 systems, OM3 provides additional insertion loss margins while remaining cost effective for less-demanding applications.

All assemblies are fully tested prior to delivery and supplied with test results.

Most common connector types, configurations and lengths are available from stock, using 3mm (for additional ruggedising) or 2mm diameter cable on request.

OM3 multimode patch cords are supplied using 3mm cable (for additional ruggedising) LSZH cable jacket as standard.

### Applications

- Data centres
- Storage area networks
- LAN/Enterprise
- High performance computing centres
- Central offices
- For use in 40 -100 Gb/s networks >100m indicative link length at 850nm (SR) wavelength
- For use in 10 Gb/s networks >300m indicative link length at 850nm (SR) wavelength
- For use in 1 Gb/s networks >1000m indicative • Link length at 850nm (SX) wavelength

### Features

- 850nm laser optimised
- LSZH - Low smoke zero halogen, aqua jacket
- 900µm tight buffer, 3mm duplex cable
- OM3 fibre conforms to or exceeds all relevant ISO/IEC, TIA/EIA and ITU standards
- All patch cords come with a UPC polished connector end face as stand

### Fibre Specification

Attenuation (db/km)  $\leq 2.4$  @ 850nm /  $\leq 0.6$  @ 1300nm

Overfilled Modal Bandwidth (MHz x km)  $\geq 1500$  @ 850nm /  $\geq 500$  @ 1300nm

2

<https://www.millsLtd.com/default/lc-st-multimode-duplex-fibre-patch-cord-om3-50-125um-2m.html>

27/04/2024

Effective Modal Bandwidth (MHz x km)  $\geq$  2000 @ 850nm

Application Support Distance on:

40 and 100 Gigabit Ethernet -SR (m) 100 @ 850nm

10 GBase - SR (m) 300 @ 850nm 1000 Base - SX (m) 1000 @ 850n

### **Cable Specification**

Cable Material LSZH

Strength Member Aramid

Crush (N/100mm) 1000

Tensile (N) 120

Operating Temperature (°C) -20 to 60

Connector Specification

IL Max/Master (db) (Acceptance)  $\leq$  0.25

Av./Random (db)  $\leq$  0.20

**Colour: Aqua**

**Length: 2m**