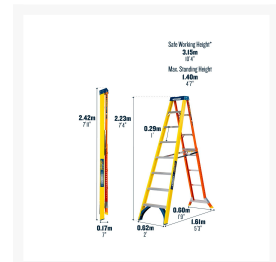
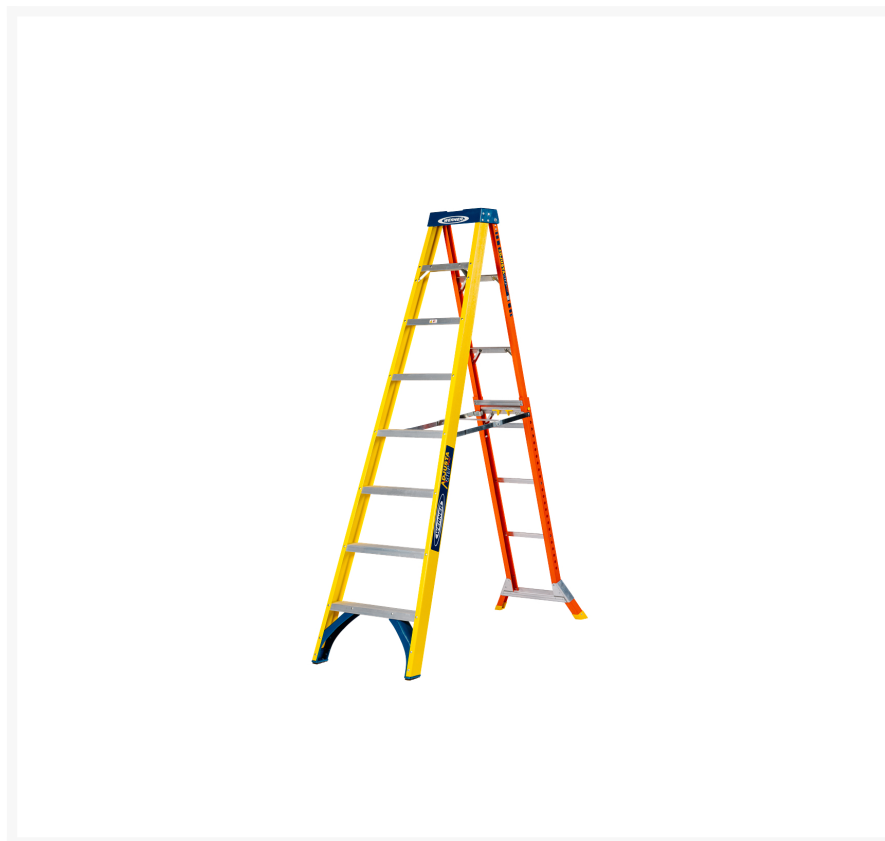
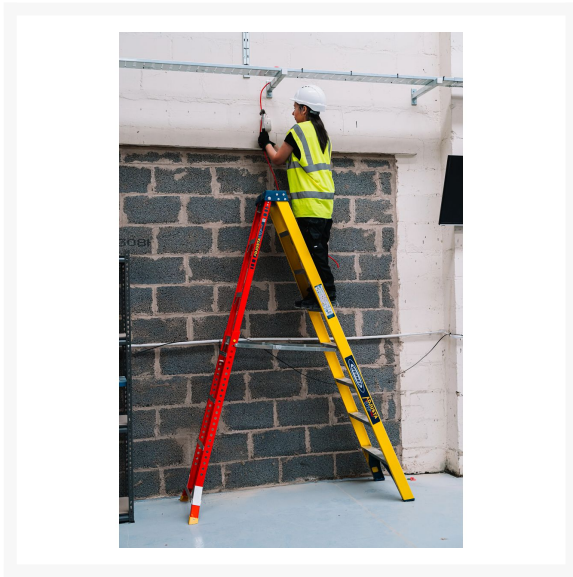
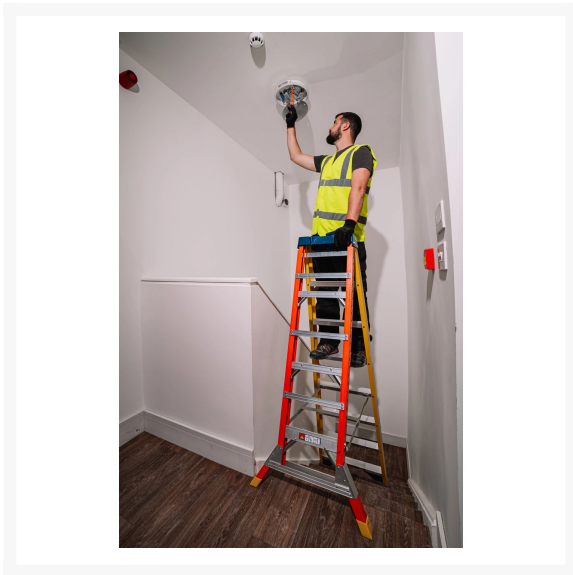


Adjustastep 8 Tread Stepladder

Product Images

Product Code: S00-9501





Short Description

The AdjustaStep PRO® 8 tread swingback fibreglass stepladder is constructed using extremely durable, non-conductive fibreglass stiles that are highly resistant to weathering. Its ergonomic adjustable rear section*, combined with a one-handed adjustment system, allows the ladder to effortlessly adapt to uneven ground, steps, or stairs - perfect for any jobsite. Additional features include an H-spreader for added stability and the combined EDGE moulded brace and footpad protects the base tread from damage. Whether you're working on flat surfaces or navigating uneven ground or stairs, the Werner AdjustaStep PRO® is the ideal solution for professionals who need one ladder that can handle multiple surface conditions.

Description

The AdjustaStep PRO® 8 tread swingback fibreglass stepladder is constructed using extremely durable, non-conductive fibreglass stiles that are highly resistant to weathering. Its ergonomic adjustable rear section*, combined with a one-handed adjustment system, allows the ladder to effortlessly adapt to uneven ground, steps, or stairs - perfect for any jobsite. Additional features include an H-spreader for added stability and the combined EDGE moulded brace and footpad protects the base tread from damage. Whether you're working on flat surfaces or navigating uneven ground or stairs, the Werner AdjustaStep PRO® is the ideal solution for professionals who need one ladder that can handle multiple surface conditions. Approved to the latest EN131 standard. For Professional Use.

Features

- One ladder for multiple surface types – adapts to a variety of challenging environments, such as uneven ground, steps, and stairs
- Robust, non-conductive, weather-resistant and fibreglass stiles – does not absorb moisture, corrode or rust
- One-handed adjustment system for quick adaptability on uneven surfaces such as uneven ground, steps or stairs.
- High-performance HolsterTop™, with specially designed paint, tool and equipment holders – designed to increase efficiency on the job
- EDGE® moulded brace and foot pad combination provides enhanced bracing strength and protects the base tread from damage
- H-spreader enables single-handed operation and adds to the strength and stability of the ladder
- Generous 298mm tread pitch provides greater working heights
- Wide, heavy-duty slip-resistant treads for comfort and security

Details

- Size 8 Tread
- Style Adjustable
- Material Fibreglass
- Standard Classification Professional
- Certifications EN131 Professional and Non-Professional Use
- Number of Treads 8
- Description of Top Features Holster Top
- Color Yellow
- Colour of Ladder Rail Yellow & Orange

- Colour of Ladder Top Blue
- Foot Material Rubber
- Edge Bracing Yes
- Lock-In Compatible Yes

Dimensions

- Open Length (m) 2.37 (7ft 9in)
- Open Width (m) 0.62m (2ft)
- Open Height (m) 2.23m (7ft 4in)
- Open Depth (m) 1.61 (5ft 3in)
- Product Weight (kg) 13.5 Kg
- Closed Length (m) 2.42m (7ft 11in)
- Closed Width (m) 0.62 (2ft)
- Closed Depth (m) 0.17m (7in)
- Shipping Weight (kg) 13.6 Kg
- Max. Standing Height (m) 1.40m (4ft 7in)
- Open Span (m) 1.61m (5ft 3in)
- Safe Working Height (m) 3.15m (10ft 4in)
- Shipping Dimensions L x W x D (m) 2.42m x 0.62m x 0.17m (7ft 11in x 2ft x 7in)
- Max. Load (kg) 150kg (23st 9lb)
- Tread Spacing (mm) 298mm (1 ft)
- Tread Depth (mm) 80mm