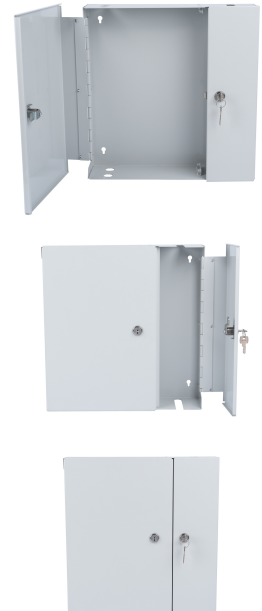
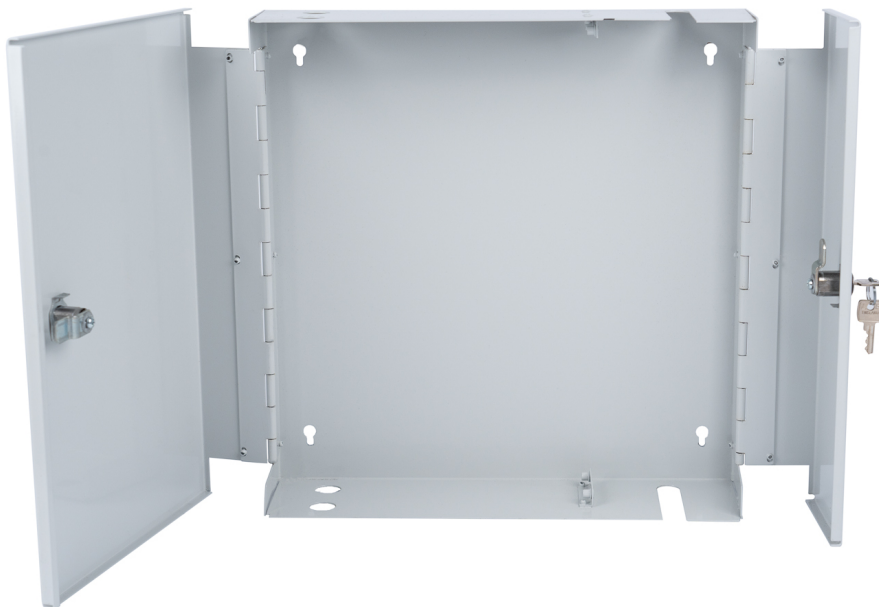
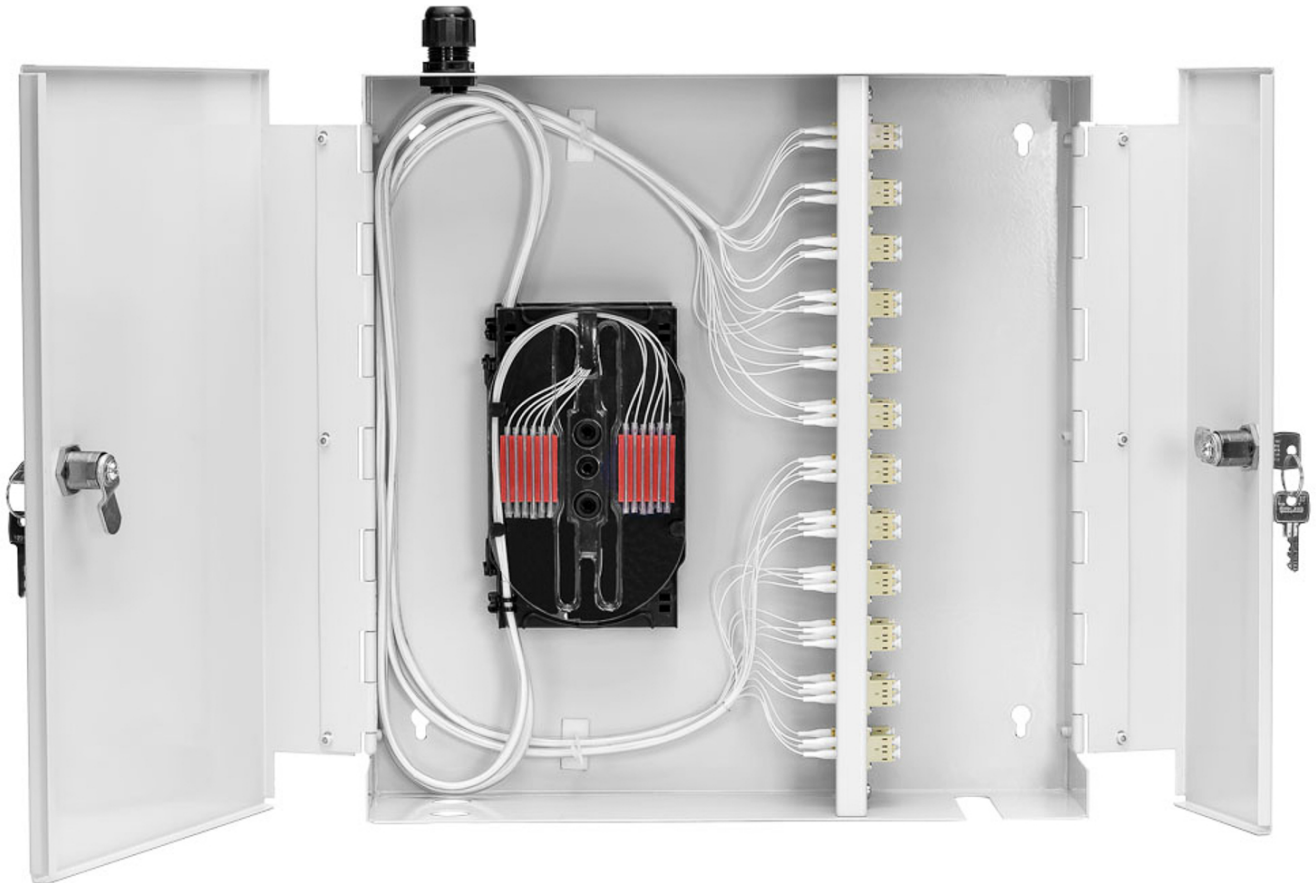

16-Fibre LC Double Door Lockable Wall Box (Multimode)

Product Images

Product Code: T70-8003





Short Description

- Capable of supporting up to 48 fibres.
- Designed for fast and secure installation.
- Interchangeable internal adaptor plates.
- Standard cable entry points at top and bottom.
- Slim design and aesthetically pleasing when installed.
- Pre-drilled fixing holes.
- Easy access for installation and rework.

Comes complete with Box, adaptors, and management Kit

Picture 5 is for illustration purposes only, each box is supplied with adaptors, but not pigtails or slice cassettes.

Description

- Capable of supporting up to 48 fibres.
- Designed for fast and secure installation.
- Interchangeable internal adaptor plates.
- Standard cable entry points at top and bottom.

- Slim design and aesthetically pleasing when installed.
- Pre-drilled fixing holes.
- Easy access for installation and rework.

Comes complete with Box, adaptors, and management Kit

Picture 5 is for illustration purposes only, each box is supplied with adaptors, but not pigtails or slice cassettes.