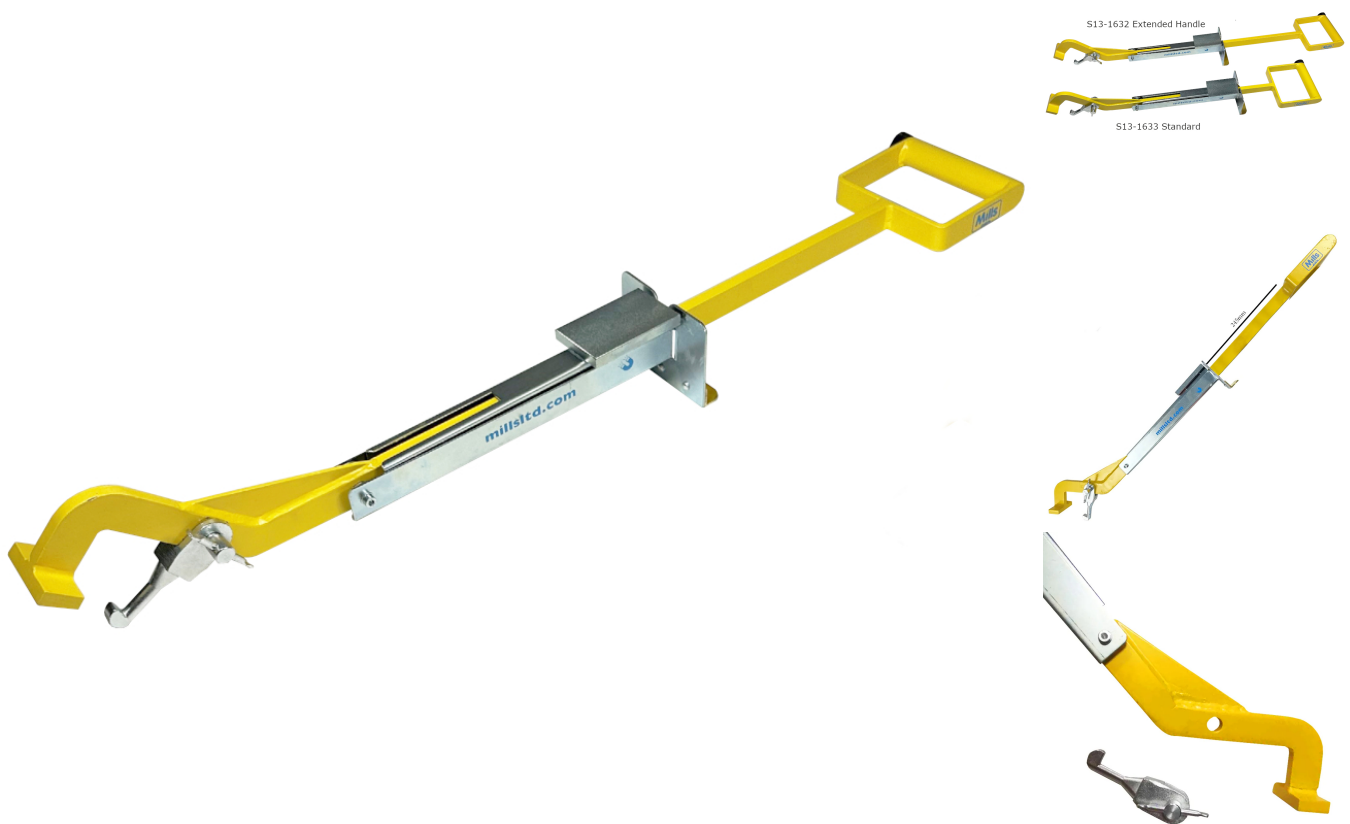
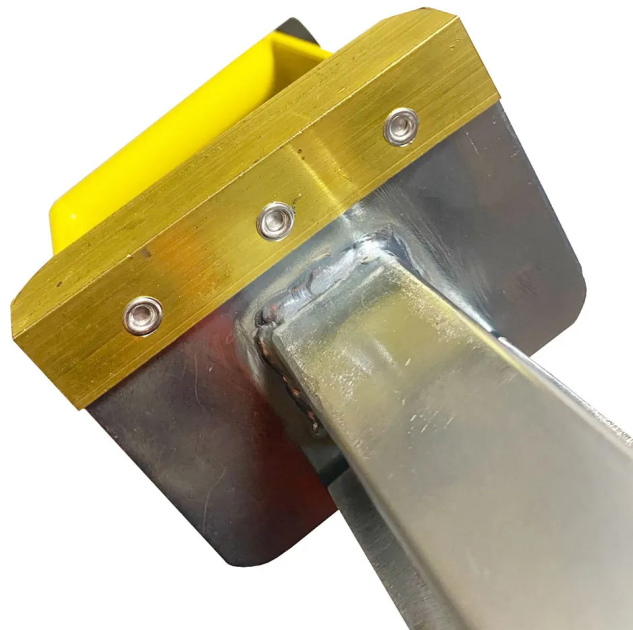


Mills Key Joint Box No.5ML Pit Lifter (Extended Handle) with Magnetic Arms & Cleaning Key

Product Images

Product Code: S13-1632





Short Description

By popular demand, we are pleased to now offer the No.5ML Mills Key Joint Box in an extended length, to suit taller engineers.

The S13-1632, Mills Key Joint Box No.5ML With Magnetic Arms & Cleaning Key (Extended Length) has all the features of the S13-1633 but with a handle that has been extended by 150mm.

The Mills premier pit lifting key is similar to the classic key joint box No.5 but enhanced with an integral cleaning tool, quick change hook and magnetic counterbalance arms.

Cleaning Tool - a wedge shaped key for cleaning around covers prior to opening, which neatly screws back into the handle for storage.

Magnetic Counterbalance arms - when in the closed position the arms are held to the body of the lifter by strong magnetic pads. Featuring a three rivet phosphor bronze edge strip, the arms can be purchased separately and are compatible with the Mills Classic No.5 Lifter and most other manufacturers' No.5 lifters. They can be easily retrofitted in minutes.

Quick Change Hook - the No.5ML lifter benefits from a quick change forged hook, which can be easily changed from forward to back position, allowing stubborn covers to be 'cracked'.

The hook is secured by a simple tee key. The hook and tee key can be purchased separately and are compatible with Mills Classic No 5 Lifter and most other manufacturers' No 5 lifters.

Description

By popular demand, we are pleased to now offer the No5ML Mills Key Joint Box in an extended length, to suit taller engineers.

The S13-1632, Mills Key Joint Box 5ML With Magnetic Arms & Cleaning Key (Extended Length) has all the features of the S13-1633 but with a handle that has been extended by 150mm.

The Mills premier pit lifting key is similar to the classic key joint box No 5 but enhanced with an integral cleaning tool, quick change hook and magnetic counterbalance arms.

Cleaning Tool - a wedge shaped key for cleaning around covers prior to opening, which neatly screws back into the handle for storage.

Magnetic Counterbalance arms - when in the closed position the arms are held to the body of the lifter by strong magnetic pads. Featuring a three rivet phosphor bronze edge strip, the arms can be purchased separately and are compatible with the Mills Classic No 5 Lifter and most other manufacturers' No 5 lifters. They can be easily retrofitted in minutes.

Quick Change Hook - the No 5ML lifter benefits from a quick change forged hook, which can be easily changed from forward to back position, allowing stubborn covers to be 'cracked'.

The hook is secured by a simple tee key. The hook and tee key can be purchased separately and are compatible with Mills Classic No 5 Lifter and most other manufacturers' No 5 lifters.