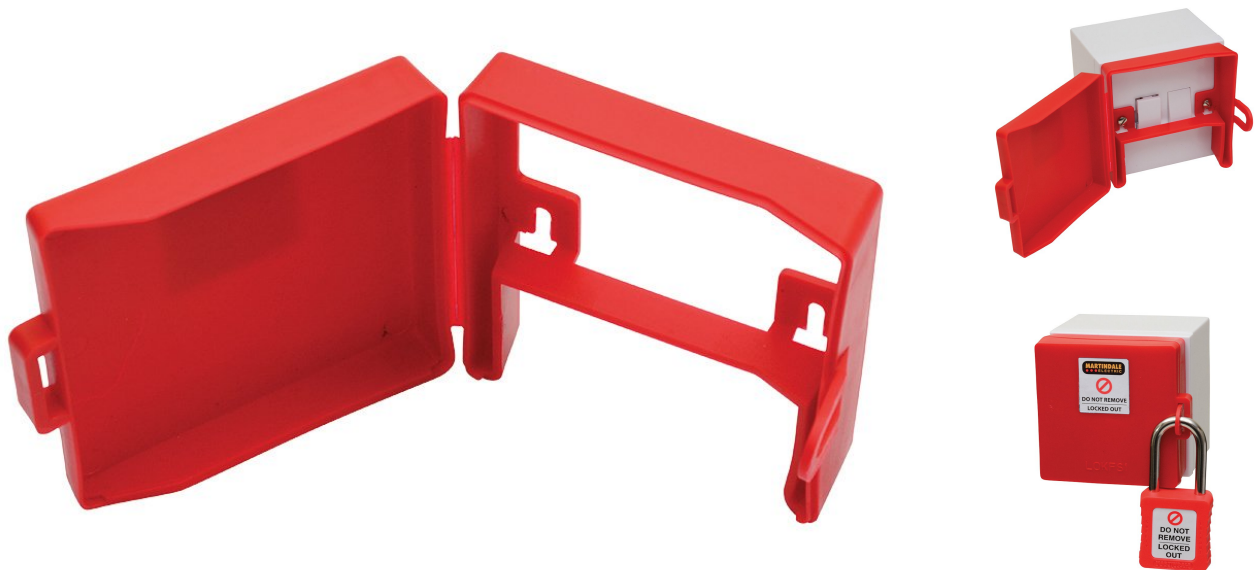


Martindale LOKFS1 Universal Fused Spur Locking Off Device

Product Images

Product Code: C70-2016



Short Description

The LOKFS1 is a universal locking off device for single gang fused spur connection units complying with

1

<https://www.millsltd.com/default/martindale-lokfs1-universal-fused-spur-locking-off-device.html>

17/04/2024

BS 1363-4. It enables safe isolation procedures to be carried out in residential, commercial and industrial premises in accordance with the Electricity at Work Regulations.

Designed for compatibility with a wide range of fused spurs, the LOKFS1 provides a simple solution to ensure circuits remain safely isolated during maintenance and installation work of fixed wired appliances including cookers, boilers, hand dryers and water heaters.

Once the fuse tray has been opened and the fuse removed, the LOKFS1 is secured in place using the screw heads of the existing fascia plate and then locked off with a compatible padlock to prevent reinsertion of the fuse. The design has industry standard fixing centres and will accommodate flexible outlet cabling from the fused spur.

Fitting the LOKFS1 requires no special tools and the polypropylene case contains no metal parts. The locking off device is compatible with Martindale PAD11 and PAD21 Series padlocks (not included).

Features

Enables local isolation
Compatible with a wide range of fused spurs
Simple installation, loosen screws, slip on and fasten
Accommodates flex outlets

Description

The LOKFS1 is a universal locking off device for single gang fused spur connection units complying with BS 1363-4. It enables safe isolation procedures to be carried out in residential, commercial and industrial premises in accordance with the Electricity at Work Regulations.

Designed for compatibility with a wide range of fused spurs, the LOKFS1 provides a simple solution to ensure circuits remain safely isolated during maintenance and installation work of fixed wired appliances including cookers, boilers, hand dryers and water heaters.

Once the fuse tray has been opened and the fuse removed, the LOKFS1 is secured in place using the screw heads of the existing fascia plate and then locked off with a compatible padlock to prevent reinsertion of the fuse. The design has industry standard fixing centres and will accommodate flexible outlet cabling from the fused spur.

Fitting the LOKFS1 requires no special tools and the polypropylene case contains no metal parts. The locking off device is compatible with Martindale PAD11 and PAD21 Series padlocks (not included).

Features

Enables local isolation
Compatible with a wide range of fused spurs
Simple installation, loosen screws, slip on and fasten
Accommodates flex outlets