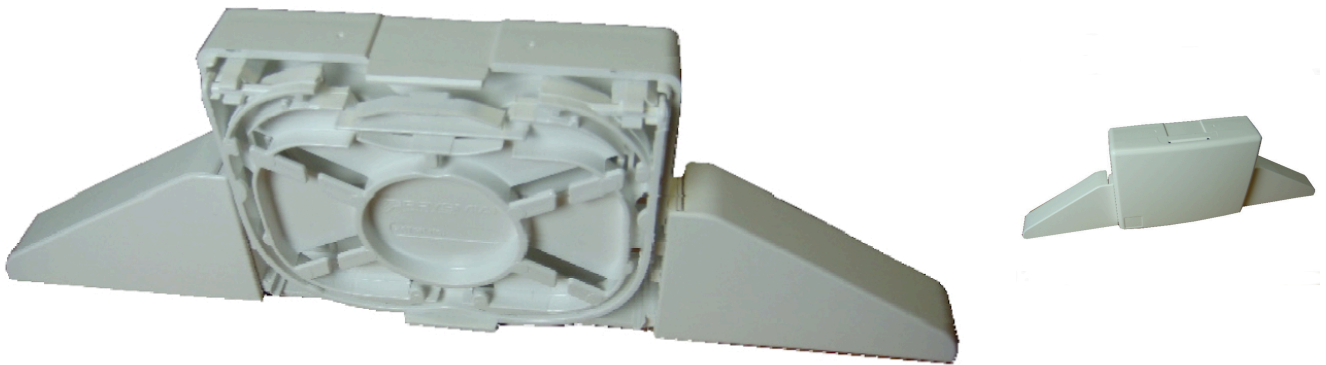

Prysmian Verticasa Internal Transition Box (ITB) 12/24F

Product Images

Product Code: XCPSC00523



Short Description

The Verticasa In-line Transition Box (ITB), is mainly used for Multi Dwelling Units (MDU's) or office fibre

cabling systems. It is a compact splicing box enabling the splicing of up to 4 drop cables to a main in-line cable. The ITB houses a single splicing tray. It is available in two versions, one for 12 and 24 fibre Verticasa cables and one for 48 fibre Verticasa cable

Features

- Allows splicing from cables to cables.
- 12/24 fibre version is suitable for one inline cable of up to 12.5mm in diameter. The 48 fibre version is suitable for one inline cable of up to 15mm in diameter.
- Up to 4 drop cables can be spliced to the in-line cable.
- The compact dimensions 100 x 80 x 32mm allow the unit to be installed in the network where access is restricted: riser, duct, etc...
- The cable entries are suitable for 5mm drop tubes or standard cables from 2.5 to 5 mm OD.
- Up to 4 fusion splices or two mechanical splices can be accommodated into the splice tray.
- Cable management within the unit ensures the minimum 20mm bend radius for optical fibre is not exceeded.
- Easily installed and fitted to the wall or inside a riser.
- Input/output cables are secured at the cables entry levels.
- Manufactured from fire resistant UL94-V0 rated material.

Specifications

- Maximum number of splices: 2 mechanical, 4 fusion
- Number of cable ports: 1 Input Cable - 4 Output Cables
- Maximum cable diameter (mm): 12.5 mm (12/24F), 15.0mm (48F)
- Required space envelope (mm): (L) 100 x (W) 80 x (D) 32
- Operating temperature: -20o C to + 50 o C (5 to 95% RH)
- Material Internal Unit:-
- Cover: FR ABS - White RAL 9016
- Base: FR ABS – White RAL 9016

Description

The Verticasa In-line Transition Box (ITB), is mainly used for Multi Dwelling Units (MDU's) or office fibre cabling systems. It is a compact splicing box enabling the splicing of up to 4 drop cables to a main in-line cable. The ITB houses a single splicing tray. It is available in two versions, one for 12 and 24 fibre Verticasa cables and one for 48 fibre Verticasa cable

Features

- Allows splicing from cables to cables.
- 12/24 fibre version is suitable for one inline cable of up to 12.5mm in diameter. The 48 fibre version is suitable for one inline cable of up to 15mm in diameter.
- Up to 4 drop cables can be spliced to the in-line cable.
- The compact dimensions 100 x 80 x 32mm allow the unit to be installed in the network where access is restricted: riser, duct, etc...

- The cable entries are suitable for 5mm drop tubes or standard cables from 2.5 to 5 mm OD.
- Up to 4 fusion splices or two mechanical splices can be accommodated into the splice tray.
- Cable management within the unit ensures the minimum 20mm bend radius for optical fibre is not exceeded.
- Easily installed and fitted to the wall or inside a riser.
- Input/output cables are secured at the cables entry levels.
- Manufactured from fire resistant UL94-V0 rated material.

Specifications

- Maximum number of splices: 2 mechanical, 4 fusion
- Number of cable ports: 1 Input Cable - 4 Output Cables
- Maximum cable diameter (mm): 12.5 mm (12/24F), 15.0mm (48F)
- Required space envelope (mm): (L) 100 x (W) 80 x (D) 32
- Operating temperature: -20o C to + 50 o C (5 to 95% RH)
- Material Internal Unit:-
- Cover: FR ABS - White RAL 9016
- Base: FR ABS - White RAL 9016