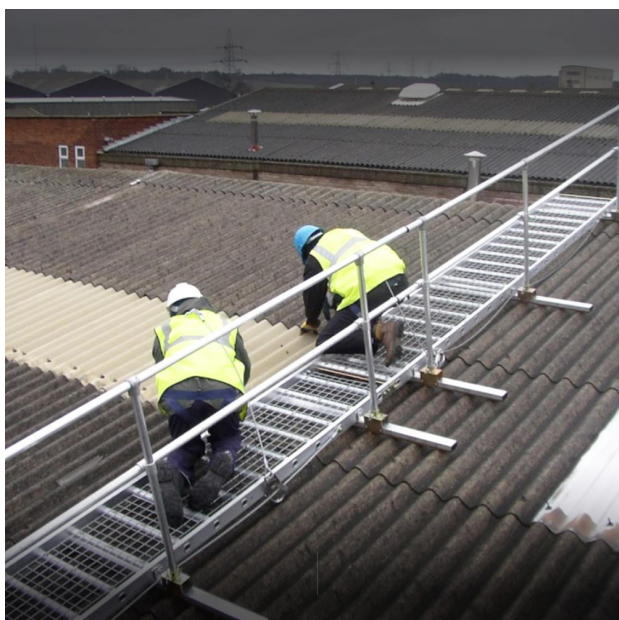


# Easi-Dec Board-Walk 3m Section

## Product Images

Product Code: S00-0813





## Short Description

---

The Easi-Dec Board-Walk is a roof maintenance and repair platform designed to allow access to the roof from eaves to ridge, while spreading the load on support battens. It is suitable for fragile roofs.

Board-Walk is configurable to suit your requirements with a choice of 1m, 2m, 3m or 4m lengths. Add accessories to ensure that the system is fit for the exact job in hand. Handrail options are also available for added safety.

Board-Walk has been designed to be put together by a single person, quickly. The system is easy to assemble, use and disassemble.

The Board-Walk is thoroughly tried and tested to ensure that you remain safe while working on a roof.

### Specifications

- Walkway width: 600mm
- Material: 6082T6 high grade aluminium
- Suitable for an incline of up to 30 degrees

The Easi-Dec Board-Walk complies with the following standards:

- EN12811-1
- EN 795: 2012.

Dimensions: 3000mm x 620mm x 80mm

Easi-Dec ref ED040157S

## Description

---

The Easi-Dec Board-Walk is a roof maintenance and repair platform designed to allow access to the roof from eaves to ridge, while spreading the load on support battens. It is suitable for fragile roofs.

Board-Walk is configurable to suit your requirements with a choice of 1m, 2m, 3m or 4m lengths. Add accessories to ensure that the system is fit for the exact job in hand. Handrail options are also available for added safety.

Board-Walk has been designed to be put together by a single person, quickly. The system is easy to assemble, use and disassemble.

The Board-Walk is thoroughly tried and tested to ensure that you remain safe while working on a roof.

### Specifications

Walkway width: 600mm

Material: 6082T6 high grade aluminium

Suitable for an incline of up to 30 degrees

The Easi-Dec Board-Walk complies with the following standards:

EN12811-1

EN 795: 2012.

Dimensions: 3000mm x 620mm x 80mm

Easi-Dec ref ED040157S