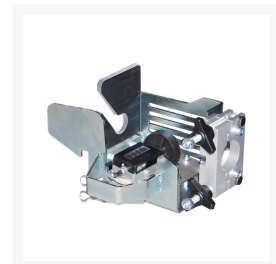


Fremco Duct Rod Rapid Pusher

Product Images

Product Code: RODPUSHER





Short Description

Fremco Duct Rod Pusher, designed in conjunction with Mills Limited and utilising all the reliability of the larger Fremco Fibre Blowing machines, this is a quality duct rod pushing machine designed to assist in rodding operations, and capable of effortlessly pushing continuous rod from 9-25mm diameter with typical distances of up to 300 metres.

The unit is mounted on a sturdy, anti-corrosion treated tubular steel frame, and powered by a strong hydraulic unit (not included) capable of delivering up to 200kg at a speed of 80 metres per minute (for safety reasons we recommend max speeds of 30 metres per minute.) The hydraulic control lever has adjustable torque, distance and speed measurement for complete rod control.

In addition the Fremco Duct Rod Pusher is equipped with a flexible clamping unit, allowing attachment of the machine to the sidewall of the manhole securing a more stable installation.

For additional safety considerations, the unit has a clamp assembly which allows subduct to be securely fixed between the rod pusher and cobra.

Includes

Fremco Duct Rod Pusher

Control valve for Duct Rod Pusher

25mm duct holder inserts

Set of chains

Specifications

Rod diameter: 9-25 mm

Duct diameter: 10-40 mm

Installation speed: Up to 80 m/min

Max. hydraulic pressure: 110 bar

Pushing/pulling force: 0-200 kg

Clamping unit range: 475-900 mm
Weight: 68 kg
Length: 1050 mm
Width: 475 mm
Height: 790 mm

Description

Fremco Duct Rod Pusher, designed in conjunction with Mills Limited and utilising all the reliability of the larger Fremco Fibre Blowing machines, this is a quality duct rod pushing machine designed to assist in rodding operations, and capable of effortlessly pushing continuous rod from 9-25mm diameter with typical distances of up to 300 metres.

The unit is mounted on a sturdy, anti-corrosion treated tubular steel frame, and powered by a strong hydraulic unit (not included) capable of delivering up to 200kg at a speed of 80 metres per minute (for safety reasons we recommend max speeds of 30 metres per minute.) The hydraulic control lever has adjustable torque, distance and speed measurement for complete rod control.

In addition the Fremco Duct Rod Pusher is equipped with a flexible clamping unit, allowing attachment of the machine to the sidewall of the manhole securing a more stable installation.

For additional safety considerations, the unit has a clamp assembly which allows subduct to be securely fixed between the rod pusher and cobra.

Includes

Fremco Duct Rod Pusher
Control valve for Duct Rod Pusher
25mm duct holder inserts
Set of chains

Specifications

Rod diameter: 9-25 mm
Duct diameter: 10-40 mm
Installation speed: Up to 80 m/min
Max. hydraulic pressure: 110 bar
Pushing/pulling force: 0-200 kg
Clamping unit range: 475-900 mm
Weight: 68 kg
Length: 1050 mm
Width: 475 mm
Height: 790 mm