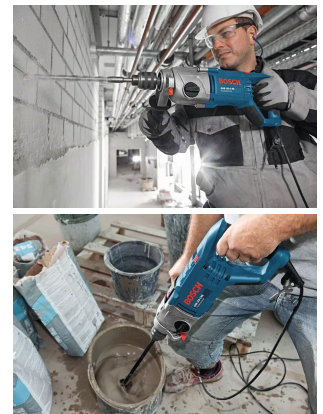


Bosch GSB 162-2 RE Professional Impact Drill 110v

Product Images

Product Code: P09-5005



Short Description

The GSB 162-2 RE Professional is a high-powered 2-gear corded impact drill designed for the toughest

applications including diamond dry-drilling. Its extremely strong 1,500 W motor with a high overload capacity and high torque is ideal for intense and heavy-duty applications. Its speed is specifically optimised to enable a fast drilling progress up to 162 mm in diameter even when using diamond core cutters in the non-impact function. The impact drill's rotation control clutch ensures an increased level of user protection even when working in the toughest materials.

Features

Extremely powerful 1,500 W motor with high overload capacity and high torque is ideal for heavy-duty applications

Optimised speed for fast drilling progress up to 162 mm in diameter even with diamond core cutters without impact function

Rotation control clutch for an increased level of user protection even when working in the toughest materials

Specifications

Rated input power 1,500 W

Voltage 110v

No-load speed, 1st gear 0 – 750 rpm

No-load speed, 2nd gear 1,800 rpm

Power output 840 W

Weight 4.8 kg

Rated speed 555 / 1,300 rpm

Rated torque 17.0 / 5.0 Nm

Drill spindle connecting thread 5/8" – 16 UN

Chuck capacity, min./max. 3 – 16 mm

Tool dimensions (width) 97 mm

Tool dimensions (length) 464 mm

Tool dimensions (height) 175 mm

Impact rate at no-load speed 0 – 12,750 / 30,600 bpm

Contents

Carrying case

Auxiliary handle

Depth stop

Keyed chuck 16 mm

Description

The GSB 162-2 RE Professional is a high-powered 2-gear corded impact drill designed for the toughest applications including diamond dry-drilling. Its extremely strong 1,500 W motor with a high overload capacity and high torque is ideal for intense and heavy-duty applications. Its speed is specifically optimised to enable a fast drilling progress up to 162 mm in diameter even when using diamond core cutters in the non-impact function. The impact drill's rotation control clutch ensures an increased level of user protection even when working in the toughest materials.

Features

Extremely powerful 1,500 W motor with high overload capacity and high torque is ideal for heavy-duty applications

Optimised speed for fast drilling progress up to 162 mm in diameter even with diamond core cutters without impact function

Rotation control clutch for an increased level of user protection even when working in the toughest materials

Specifications

Rated input power 1,500 W

Voltage 110v

No-load speed, 1st gear 0 – 750 rpm

No-load speed, 2nd gear 1,800 rpm

Power output 840 W

Weight 4.8 kg

Rated speed 555 / 1,300 rpm

Rated torque 17.0 / 5.0 Nm

Drill spindle connecting thread 5/8" – 16 UN

Chuck capacity, min./max. 3 – 16 mm

Tool dimensions (width) 97 mm

Tool dimensions (length) 464 mm

Tool dimensions (height) 175 mm

Impact rate at no-load speed 0 – 12,750 / 30,600 bpm

Contents

Carrying case

Auxiliary handle

Depth stop

Keyed chuck 16 mm