



Mills Limited
Unit 2,
Zodiac Business Park,
High Road,
Cowley
Uxbridge
UB8 2GU

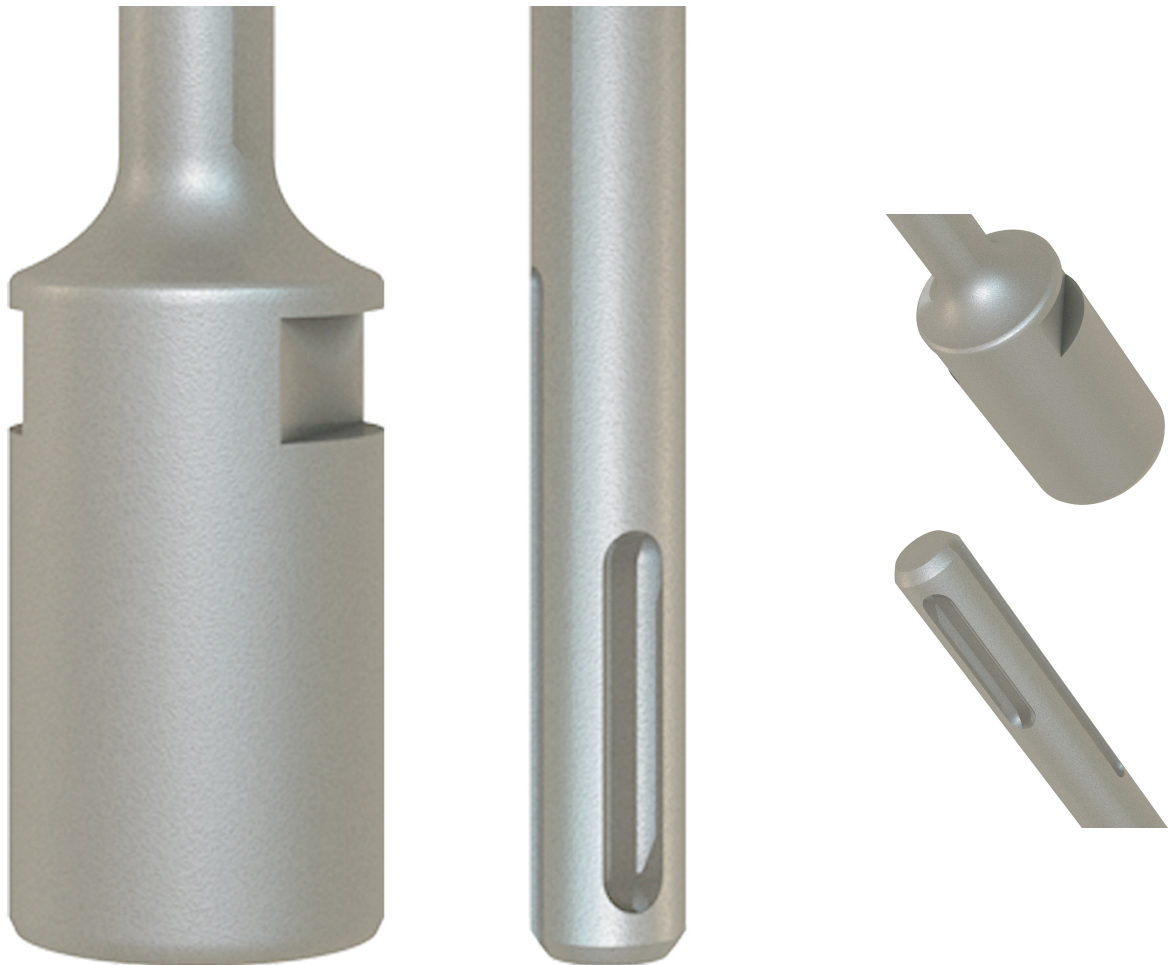
Contact us on:
Tel: 020 8833 2626
Fax: 020 8833 2600
Email: sales@millsltd.com

Company No. 00282704
VAT No. 227082574

Earth Rod Pro Driver SDS Plus

Product Images

Product Code: R02-1428



Short Description

With the rise of new challenges like 5G, EV charging industry, Big Data installers are completing even more earth rod installations than ever before. However, this can be a laborious task, often involving a large hammer, a lot of effort, and hopefully a bit of luck.

It doesn't have to be this way.

<https://www.millsltd.com/default/earth-rod-pro-driver-sds-plus.html>
29/04/2024

Linian developed a simple and effective solution that bores through hard top layers and underground rock to achieve a secure Earth Rod connection first time. This innovative, patented new solution offers installers confidence that they will be able to easily install the rod first time, and to the desired depth. No more trial and error!

How it works

The Linian Earth Rod Pro has two components – the R02-1428 Reusable SDS+ Driver (SDS Max option also available on request), and the R02-1429 sacrificial tip bit. Simply attach the Earth Rod Pro Driver to one end of a copper earth rod and attach the Earth Rod Pro Bit directly to the other end of the earth rod.

Using an SDS drill, the rod can then be rapidly installed directly into the ground. The carbide tipped bit will chew through any rock and debris, remaining in the ground after installation.

Description

With the rise of new challenges like 5G, EV charging industry, Big Data installers are completing even more earth rod installations than ever before. However, this can be a laborious task, often involving a large hammer, a lot of effort, and hopefully a bit of luck.

It doesn't have to be this way.

Linian developed a simple and effective solution that bores through hard top layers and underground rock to achieve a secure Earth Rod connection first time. This innovative, patented new solution offers installers confidence that they will be able to easily install the rod first time, and to the desired depth. No more trial and error!

How it works

The Linian Earth Rod Pro has two components – the R02-1428 Reusable SDS+ Driver (SDS Max option also available on request), and the R02-1429 sacrificial tip bit. Simply attach the Earth Rod Pro Driver to one end of a copper earth rod and attach the Earth Rod Pro Bit directly to the other end of the earth rod.

Using an SDS drill, the rod can then be rapidly installed directly into the ground. The carbide tipped bit will chew through any rock and debris, remaining in the ground after installation.