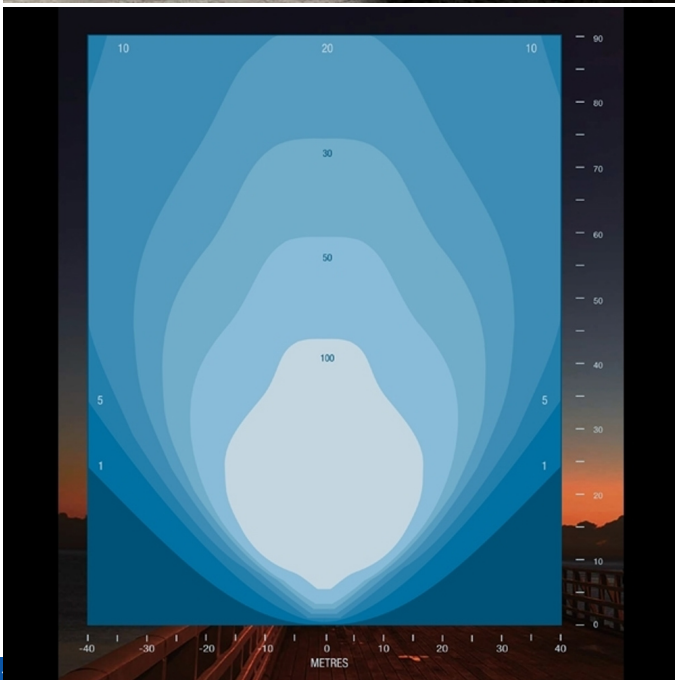


Evopower LT600-LED-I 600W LED Mobile Lighting Tower 110v

Product Images

Product Code: P57-4329





Short Description

The Evopower LT600-LED-I is an LED lighting tower suitable for a wide range of applications including large outdoor events, construction and work sites, workshop, farming, logistics, rural and hard to reach areas and temporary public lighting. **Ideal for petrol generators up to 700 x 550 x 560mm or 700 x 570 x 500mm.**

Key Features

Multi-directional adjustable and tiltable LED floodlights.
4x 150W LED Lights
High 12,500 lumen output light coverage from each lamp.
Quick and easily erected by a single operator.
5 metre mast on steerable trolley with twin stabilizers.
30,000hrs lamp durability.
Full UK spares backup to maintain your machine for years to come.
Covered by Evopower 2 year warranty.

The LT600-LED-I provides a flexible lighting solution by allowing users to easily plug into any power source including auxiliary power, portable generators or directly into the mains power supply. The lighting tower comes equipped with a socket to enable additional units to be daisy-chained.

12500 Lumens at Only 600W

The Evopower LT600-LED-I mobile lighting tower boasts high power efficiency, the highly efficient LED light heads deliver a powerful 12500 lumens at only 600W (150w x 4) power consumption.

Off Road Tyres

Easy to transport the LT600-LED-I lighting tower features 4 pneumatic off road tyres, with rapid one person deployment. Simply push the lighting tower into place, apply the brake, lower the stabiliser legs and erect the mast using the single operator handle. Towering 5 metres in height from the ground the LT600-LED-I provides excellent illumination of large areas requiring temporary lighting.

Mains or Generator Powered

Mains or generator powered the LT600-LED-I can be used with existing 230v power supply equipment (Please specify 230v model when ordering). Due to low power consumption the generator is also available to run other electrical equipment. Suitable for the event and construction market, the LT600-LED-I complies with noise regulations at only 62dBA.

Up To 8 Lighting Towers From One 6kW Generator

Each lighting tower can be daisy chained (connected in series) to allow up to 8 lighting towers to be powered from one 6kw generator, making for ultra low fuel consumption of less than ¼ litre per hour for each tower (assumes up to 2 litres an hour for the generator).

Coverage

Luxes are used to measure the amount of light output in a given area - one lux is equal to one lumen per square meter. It enables the measurement of the total amount of visible light present and the intensity of the illumination on a surface. Please see coverage image.

20 Luxes: area is up to 2500m²

30 Luxes: area is up to 1800m²

50 Luxes: area is up to 1300m²

100 Luxes: area is up to 700m²

Specifications

Model Number LT600-LED-I

Light Coverage 720m²

Lamps LED

Lamp Wattage 4x150w

Life Expectancy 30000hrs

Mast Vertical Manual

Sound Pressure Level 62 dB(A)

Max Height 5m

New weight 115Kg

Dimensions (L x W x H) 1170 x 880 x 1950mm (mast down)

Generator Compatibility

Generator Type Petrol Generators

Rated Frequency 50Hz

Rated Voltage 110VAC

Recommended Rated Power 2.5kVA

Maximum Generator Dimensions (LxWxH)

700 x 550 x 560mm or 700 x 570 x 500mm

Please see user manual for further details

230v model available on request

Description

The Evopower LT600-LED-I is an LED lighting tower suitable for a wide range of applications including large outdoor events, construction and work sites, workshop, farming, logistics, rural and hard to reach areas and temporary public lighting. **Ideal for petrol generators up to 700 x 550 x 560mm or 700 x 570 x 500mm.**

Key Features

4

<https://www.millsLtd.com/default/evopower-lt600-led-i-600w-led-mobile-lighting-tower-110v.html>

30/04/2024

Multi-directional adjustable and tiltable LED floodlights.
4x 150W LED Lights
High 12,500 lumen output light coverage from each lamp.
Quick and easily erected by a single operator.
5 metre mast on steerable trolley with twin stabilizers.
30,000hrs lamp durability.
Full UK spares backup to maintain your machine for years to come.
Covered by Evopower 2 year warranty.

The LT600-LED-I provides a flexible lighting solution by allowing users to easily plug into any power source including auxiliary power, portable generators or directly into the mains power supply. The lighting tower comes equipped with a socket to enable additional units to be daisy-chained.

12500 Lumens at Only 600W

The Evopower LT600-LED-I mobile lighting tower boasts high power efficiency, the highly efficient LED light heads deliver a powerful 12500 lumens at only 600W (150w x 4) power consumption.

Off Road Tyres

Easy to transport the LT600-LED-I lighting tower features 4 pneumatic off road tyres, with rapid one person deployment. Simply push the lighting tower into place, apply the brake, lower the stabiliser legs and erect the mast using the single operator handle. Towering 5 metres in height from the ground the LT600-LED-I provides excellent illumination of large areas requiring temporary lighting.

Mains or Generator Powered

Mains or generator powered the LT600-LED-I can be used with existing 230v power supply equipment (Please specify 230v model when ordering). Due to low power consumption the generator is also available to run other electrical equipment. Suitable for the event and construction market, the LT600-LED-I complies with noise regulations at only 62dBA.

Up To 8 Lighting Towers From One 6kW Generator

Each lighting tower can be daisy chained (connected in series) to allow up to 8 lighting towers to be powered from one 6kw generator, making for ultra low fuel consumption of less than ¼ litre per hour for each tower (assumes upto 2 litres an hour for the generator).

Coverage

Luxes are used to measure the amount of light output in a given area - one lux is equal to one lumen per square meter. It enables the measurement of the total amount of visible light present and the

intensity of the illumination on a surface. Please see coverage image.

20 Luxes: area is up to 2500m²

30 Luxes: area is up to 1800m²

50 Luxes: area is up to 1300m²

100 Luxes: area is up to 700m²

Specifications

Model Number LT600-LED-I

Light Coverage 720m²

Lamps LED

Lamp Wattage 4x150w

Life Expectancy 30000hrs

Mast Vertical Manual

Sound Pressure Level 62 dB(A)

Max Height 5m

New weight 115Kg

Dimensions (L x W x H) 1170 x 880 x 1950mm (mast down)

Generator Compatibility

Generator Type Petrol Generators

Rated Frequency 50Hz

Rated Voltage 110VAC

Recommended Rated Power 2.5kVA

Maximum Generator Dimensions (LxWxH)

700 x 550 x 560mm or 700 x 570 x 500mm

Please see user manual for further details

230v model available on request