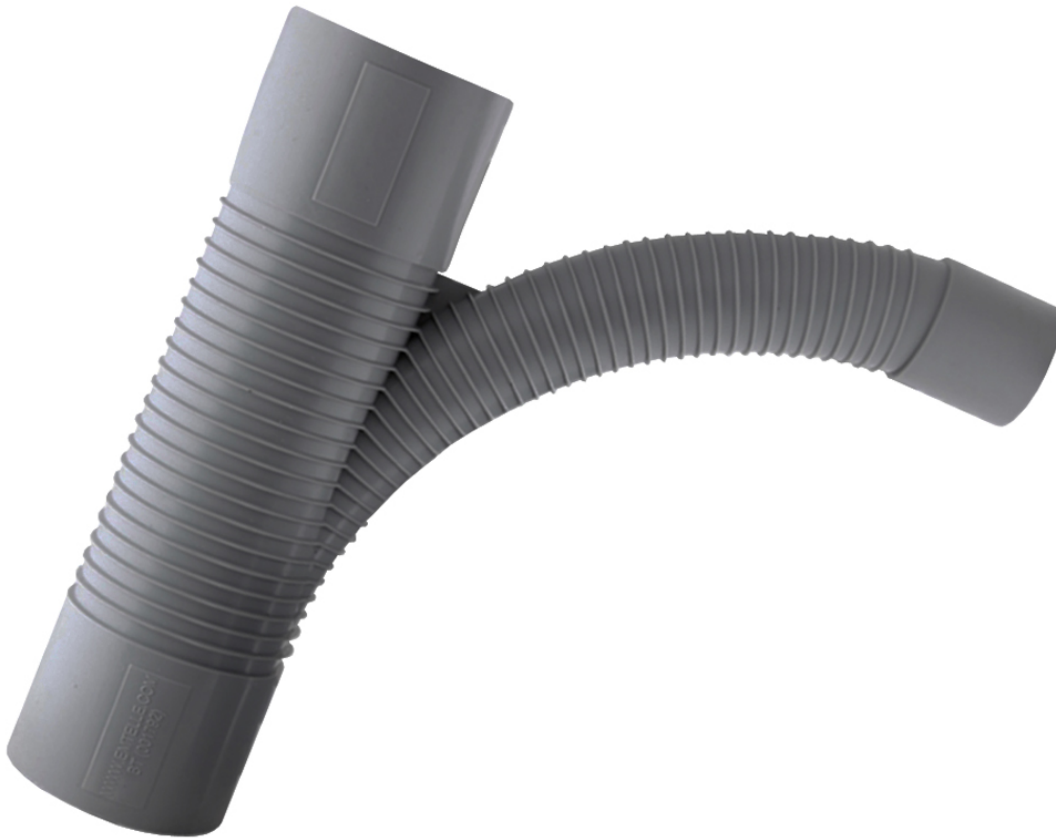

Swept Tee PVC Grey 96.5mm OD to 53.9mm OD (Duct Tee 54/56) Pack Of 20

[Product Images](#)

Product Code: S83-5062



Short Description

Swept tee for use with PVC duct system, tees off from a 96.5mm OD / 90mm ID duct to a 53.9mm OD / 50mm ID swept exit

- Manufactured from virgin PVC-U polymer = 100% reliable performance.
- Duct Systems are manufactured to Industry Standard BSEN 61386.
- Solid wall construction, capable of being back-filled with "As Dug" materials where appropriate and not affected by sharp stone impingement.
- Smooth bore ensuring easier and safer installation of sub-ducts and cables owing to lower internal friction.

Colour: Grey

Pack Of 20

Ref 001792

Description

Swept tee for use with PVC duct system, tees off from a 96.5mm OD / 90mm ID duct to a 53.9mm OD / 50mm ID swept exit

- Manufactured from virgin PVC-U polymer = 100% reliable performance.
- Duct Systems are manufactured to Industry Standard BSEN 61386.
- Solid wall construction, capable of being back-filled with "As Dug" materials where appropriate and not affected by sharp stone impingement.
- Smooth bore ensuring easier and safer installation of sub-ducts and cables owing to lower internal friction.

Colour: Grey

Pack Of 20

Ref 001792