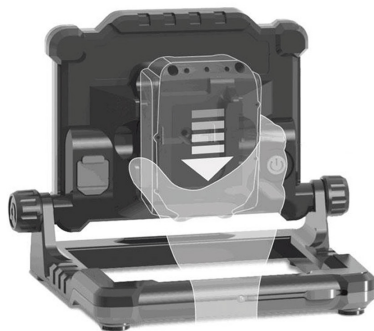
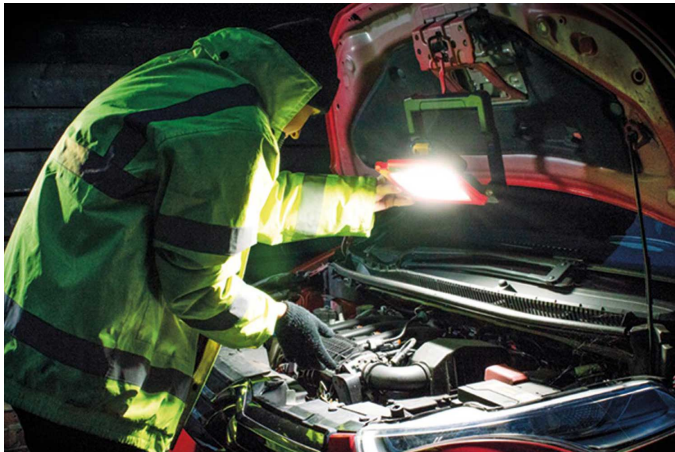


WorkStar Connect LED Worklight 18-21v

Product Images

Product Code: M99-5081





4 Power Tool Adapters:



Short Description

The WorkStar Connect is a high powered 2,500 lumen LED work light, supplied with four power tool battery adapters which accepts Black & Decker, Bosch, Makita, Stanley, Dewalt, Porter and Milwaukee 14-21V batteries, allowing you to easily utilise the battery pack you already own. It's an ideal workshop companion that can withstand hard knocks due to the high impact housing and toughened glass lens.

Tripod mountable, 4 x powerful magnetic feet & hanging hook and features a built-in power bank facility to charge your phone/tablet.

Key Features:

- Supplied with: 4 power tool adapters
- 2,500 Lumens • 3 light modes – High, Medium, Low
- Beam Distance up to 25m
- Up to 16hrs runtime
- Tripod mountable
- Toughened glass lens
- IP54 Rating
- Magnetic feet
- USB Power bank facility to charge your phone/tablet
- Adjustable stand with hanging hook

Description

The WorkStar Connect is a high powered 2,500 lumen LED work light, supplied with four power tool battery adapters which accepts Black & Decker, Bosch, Makita, Stanley, Dewalt, Porter and Milwaukee 14-21V batteries, allowing you to easily utilise the battery pack you already own. It's an ideal workshop companion that can withstand hard knocks due to the high impact housing and toughened glass lens.

Tripod mountable, 4 x powerful magnetic feet & hanging hook and features a built-in power bank facility to charge your phone/tablet.

Key Features:

- Supplied with: 4 power tool adapters
- 2,500 Lumens • 3 light modes – High, Medium, Low
- Beam Distance up to 25m
- Up to 16hrs runtime
- Tripod mountable
- Toughened glass lens
- IP54 Rating
- Magnetic feet
- USB Power bank facility to charge your phone/tablet
- Adjustable stand with hanging hook