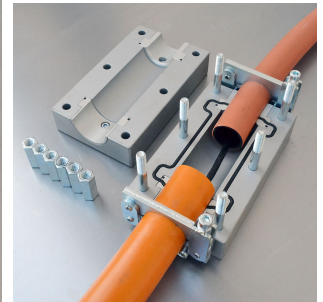
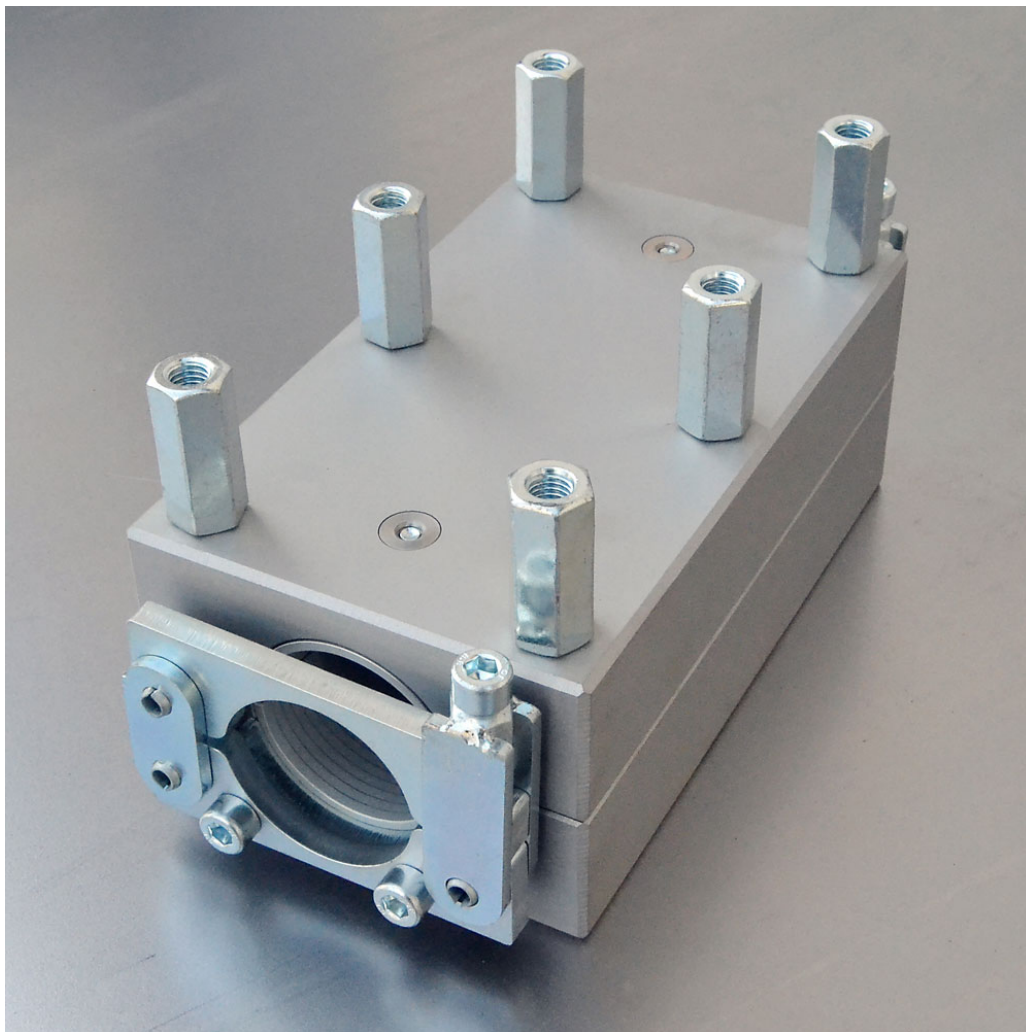


Fremco Duct Joining Block

Product Images

Product Code: JOININGBLOCK



Short Description

The duct joining block is used for joining ducts in almost all combinations between 14 and 50mm. Unlike a plastic connector, the joining block can be split into two halves and used again and again.

At the same time it can withstand much greater pressure. It's made from surface treated aluminium and can easily withstand a pressure of 25 bar from air/water.

The duct joining block uses the same type of inserts and duct collets as the junction block. This means that they can be mixed in all kinds of combinations.

Description

The duct joining block is used for joining ducts in almost all combinations between 14 and 50mm. Unlike a plastic connector, the joining block can be split into two halves and used again and again.

At the same time it can withstand much greater pressure. It's made from surface treated aluminium and can easily withstand a pressure of 25 bar from air/water.

The duct joining block uses the same type of inserts and duct collets as the junction block. This means that they can be mixed in all kinds of combinations.