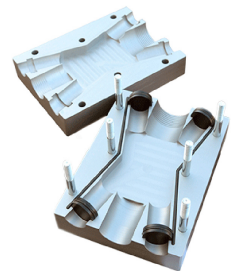
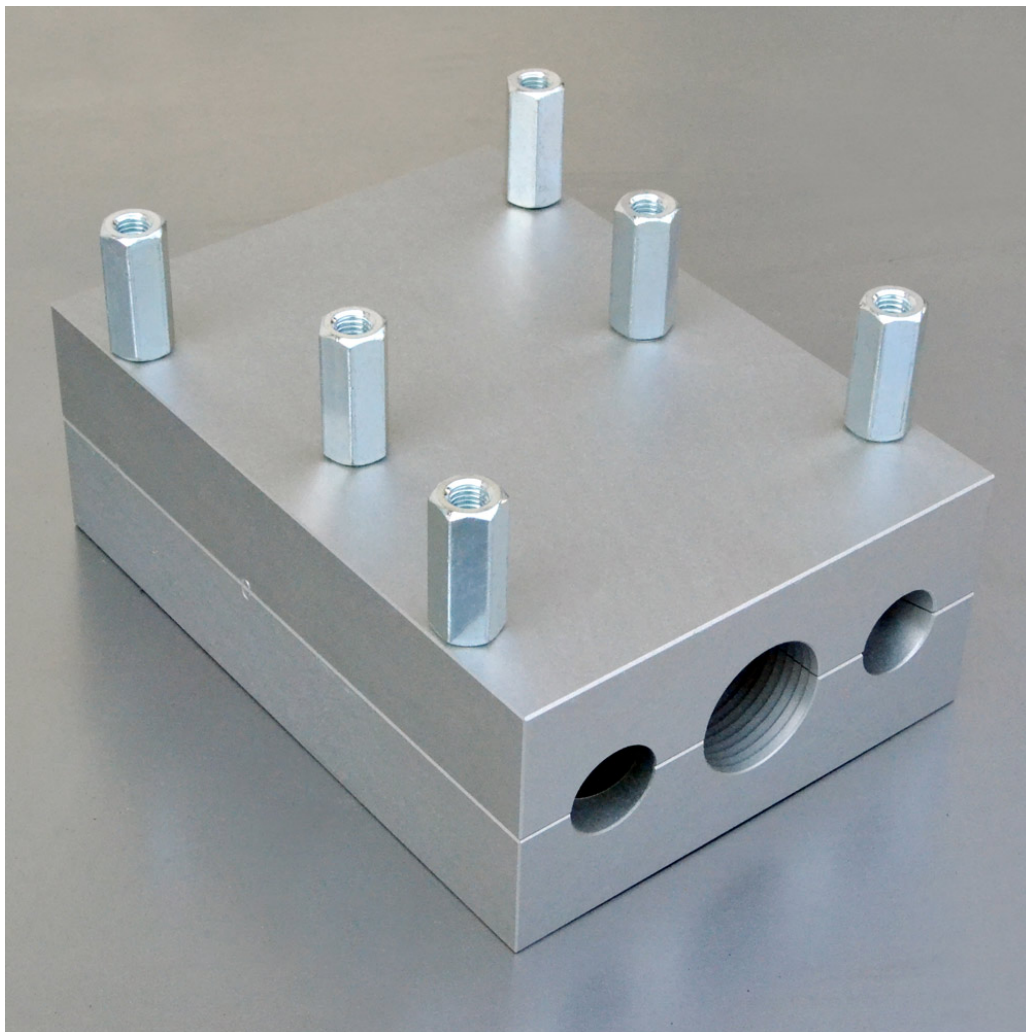


Fremco Overblow X Block

Product Images

Product Code: XBLOCK



Short Description

The X-block is used for adding one cable to an existing duct with two cables inside. It is made from surface treated aluminium and can easily withstand a pressure of 25 bar from air/water.

The X-block is made with a fixed 40mm connection at one end and a fixed 50mm connection at the opposite end.

This means that the block can be freely reversed and connected to 40mm and 50mm existing ducts in the ground and connected to Powerflow or Multiflow machines with either a 40mm or 50mm supply duct (depending on availability).

The X-block uses the same type of cable seals as the junction block.

Description

The X-block is used for adding one cable to an existing duct with two cables inside. It is made from surface treated aluminium and can easily withstand a pressure of 25 bar from air/water.

The X-block is made with a fixed 40mm connection at one end and a fixed 50mm connection at the opposite end.

This means that the block can be freely reversed and connected to 40mm and 50mm existing ducts in the ground and connected to Powerflow or Multiflow machines with either a 40mm or 50mm supply duct (depending on availability).

The X-block uses the same type of cable seals as the junction block.