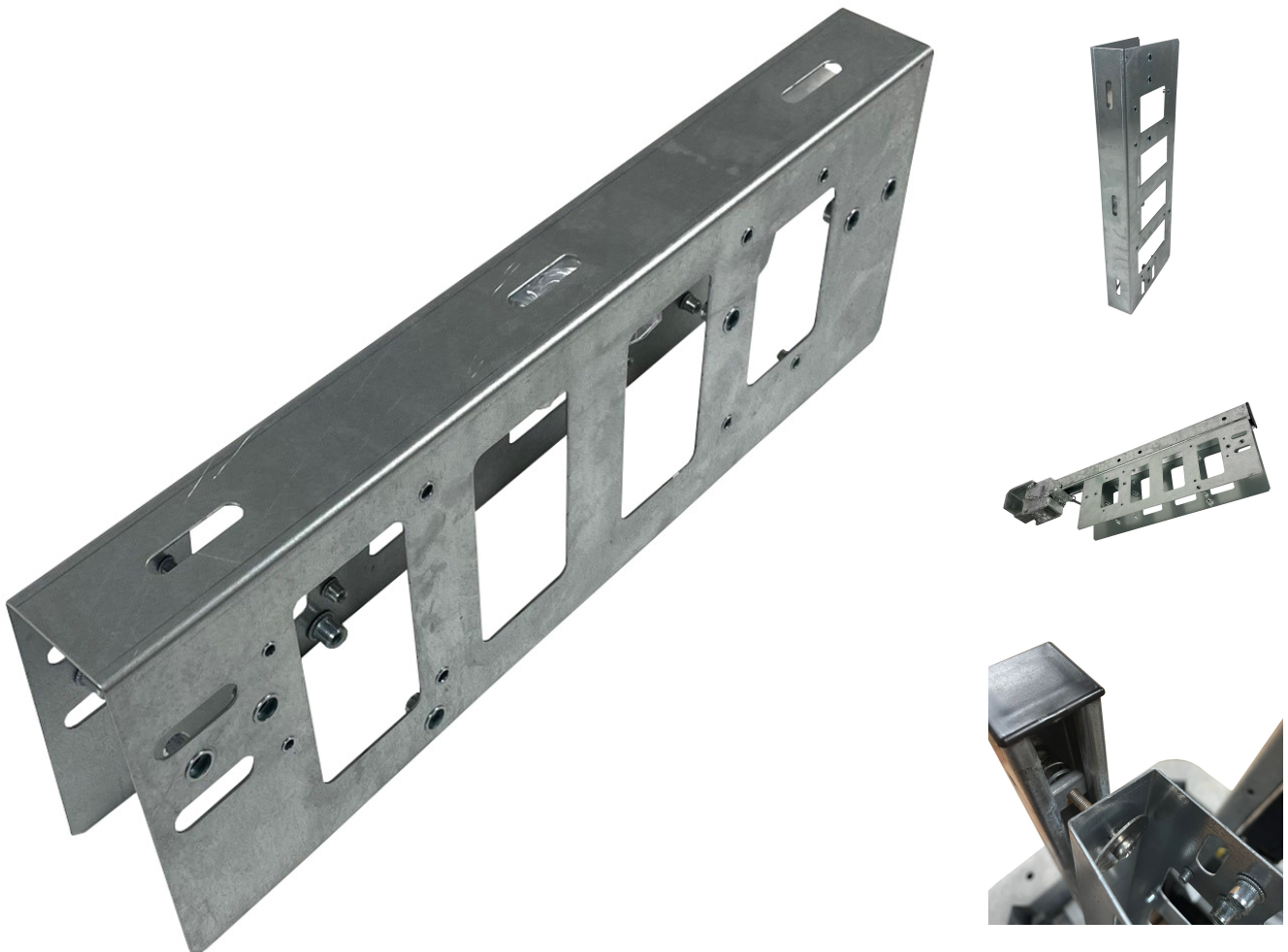
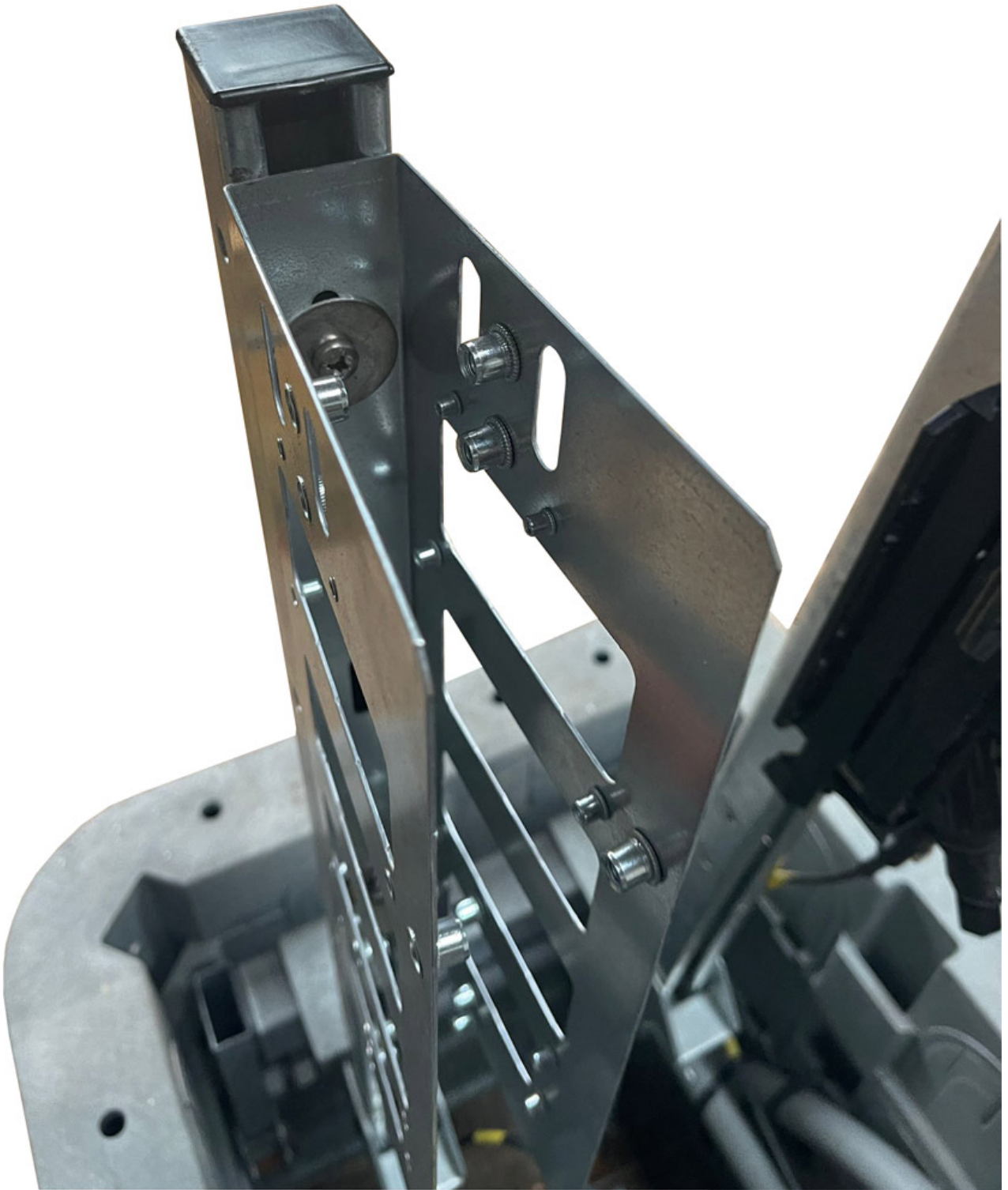


Mills CBT Back to Back Mobra Bracket

Product Images

Product Code: S00-3511





Short Description

Mills CBT back to Back Mobra Bracket is similar to the existing CBT Pole Bracket, but designed to be bolted using Zebedee spring nuts (V07-1906, V07-1907) to a Mobra arm (S83-0526 or S83-0528)

Suitable for 4, 8 and 12 Way Corning and Commscope CBTs (Connector Block Terminals)

Manufactured from 1.2mm galvanised steel, the bracket is approved for PIA application and fixes to a Mobra Arm

The bracket has 4 x 3mm, 8 x 4mm and 4 x 6mm nutserts to accept different manufacturers' CBT's

The 'back to back bracket is supplied with 4 x M3 x 25 Pozi Panhead Screws, 8 x M4 x 30 Pozi Panhead Screws and 4 x M6 x 30 Pozi Panhead Screws

Each face measures 380 x 140 mm and the bracket 'stands off' 165mm.

Mobra arm will require 2 x drill fixing holes.

Ref: 101539

Description

Mills CBT back to Back Mobra Bracket is similar to the existing CBT Pole Bracket, but designed to be bolted using Zebedee spring nuts (V07-1906, V07-1907) to a Mobra arm (S83-0526 or S83-0528)

Suitable for 4, 8 and 12 Way Corning and Commscope CBTs (Connector Block Terminals)

Manufactured from 1.2mm galvanised steel, the bracket is approved for PIA application and fixes to a Mobra Arm

The bracket has 4 x 3mm, 8 x 4mm and 4 x 6mm nutserts to accept different manufacturers' CBT's

The 'back to back bracket is supplied with 4 x M3 x 25 Pozi Panhead Screws, 8 x M4 x 30 Pozi Panhead Screws and 4 x M6 x 30 Pozi Panhead Screws

Each face measures 380 x 140 mm and the bracket 'stands off' 165mm.

Mobra arm will require 2 x drill fixing holes.

Ref: 101539