



Mills Limited
Unit 2,
Zodiac Business Park,
High Road,
Cowley
Uxbridge
UB8 2GU

Contact us on:
Tel: 020 8833 2626
Fax: 020 8833 2600
Email: sales@millsltd.com

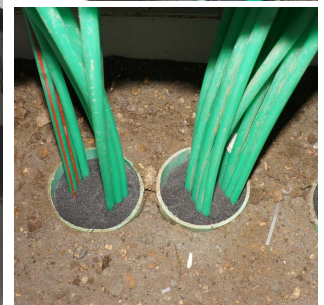
Company No. 00282704
VAT No. 227082574

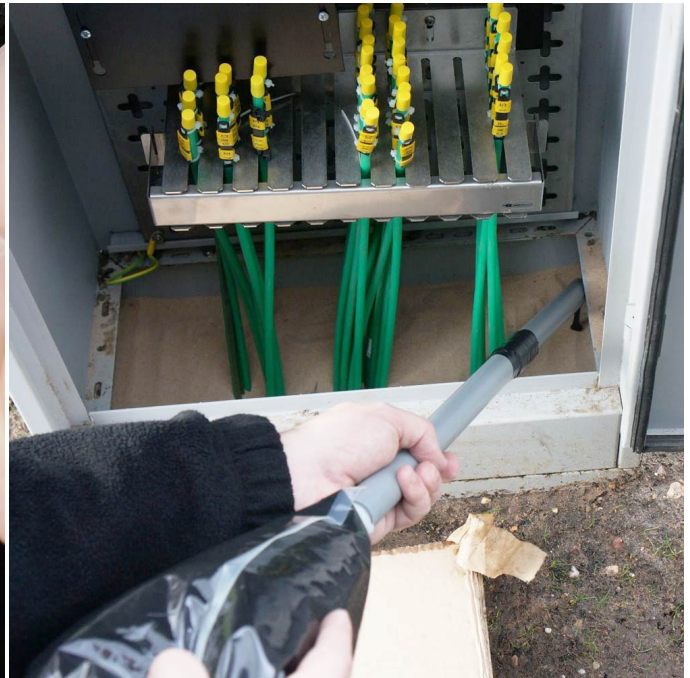
Cabinet Base Sealant - Virgin Spec

2.5 Litres

Product Images

Product Code: S83-3122





CABINET BASE SEALING INSTRUCTIONS

Additional components needed to complete the installation:
 • Kiln Dried Sand • Trowel • Spirit Level

Step 1 - Remove the circular foam disks from the box.

Step 2 - Bend the two sides of the foam apart.

Step 3 - Push the foam into the duct ensuring the centre pieces of the foam lie in the centre of the micro ducts. The foam will then self level around all the tubes.

Step 4 - Make sure each duct has the foam pushed in leaving a 20mm space at the top.

Step 5 - Open the kiln dried sand.

Step 6 - Pour the kiln dried sand in the base and over the ducts. You will require a minimum 50mm of sand.

Step 7 - **ENSURE** the sand is level, this is very important.

Virgina media

GH506
 GH507
 Danger! Contains Isocyanate P-MDI

Step 8 - Remove the 2 lengths of pipe and joining piece from the box.

Step 9 - Join the 2 pipes together using the joining piece.

Step 10 - Wrap PVC tape round to secure.

Step 11 - Remove the Silver foil Resin bag from the box.

Step 12 - Rip open the Silver Foil bag.

Step 13 - Lift out the clear resin bag.

Step 14 - Remove the clear slicer.

Step 15 - Remove the plastic central divider, this will allow the 2 sides of the resin to start mixing.

Step 16 - Tip the bag up and down to mix the resin for 2 minutes. Make sure to wear protective gloves when mixing and applying the resin.

Step 17 - Insert and hold to secure the pouring tube into the resin bag.

Step 18 - Check the pouring tube at the base of the cabinet, and the resin will start flowing after about 2 seconds. Once the hard to reach places have been completed, you can grip the corner of the resin bag to speed the installation up.

Step 19 - Make sure all the resin is used to fill the ducts and the base of the cabinet.

ONCE THE LEFTOVER RESIN HAS CURED IN THE BAG, IT CAN THEN BE DISCARDED AS STANDARD DOMESTIC WASTE

Short Description

Two part sealant used to seal the base & ducts in Virgin Media's street cabinets.

For use in LV distribution cabinets, public lighting cabinets, cabinets for traffic control, and outdoor transformer station installations.

- Easy to use and accurate filling process when pouring the resin
- Seals the cable ducts against water & gas pressures
- Prevents ingress of moisture, pests and the intrusion of weeds, roots and plants
- Improves the climate inside the street cabinets and transformer stations
- Decrease's interference of the equipment
- Extends the life of the components
- Quick and easy to apply
- Good flow properties
- Self levelling characteristics
- Good adhesion
- Smooth and non-tacky surface

- Re-enterable, so new cables can be added

Specifications

Potlife (process time) 5°C - 30 minutes

Potlife (process time) 23°C - 10 minutes

Potlife (process time) 35°C - 7 minutes

Gel-time - 23 minutes

Viscosity (mixture) 25°C - ca. 3 Pa.s

Density - 1.4g / cm³

Hardness - 52 Shore D

Tensile strength - 4N / mm²

Water absorption (30d/23°C) - < 1.0%

Weight loss 28d/120°C - 0.8%

Surface structure cured under water - No bubbles

Description

Two part sealant used to seal the base & ducts in Virgin Media's street cabinets.

For use in LV distribution cabinets, public lighting cabinets, cabinets for traffic control, and outdoor transformer station installations.

- Easy to use and accurate filling process when pouring the resin
- Seals the cable ducts against water & gas pressures
- Prevents ingress of moisture, pests and the intrusion of weeds, roots and plants
- Improves the climate inside the street cabinets and transformer stations
- Decrease's interference of the equipment
- Extends the life of the components
- Quick and easy to apply
- Good flow properties
- Self levelling characteristics
- Good adhesion
- Smooth and non-tacky surface
- Re-enterable, so new cables can be added

Specifications

3

<https://www.millsLtd.com/default/cabinet-base-sealant-virgin-spec-2-5-litres.html>

17/04/2024

Potlife (process time) 5°C - 30 minutes

Potlife (process time) 23°C - 10 minutes

Potlife (process time) 35°C - 7 minutes

Gel-time - 23 minutes

Viscosity (mixture) 25°C - ca. 3 Pa.s

Density - 1.4g / cm³

Hardness - 52 Shore D

Tensile strength - 4N / mm²

Water absorption (30d/23°C) - < 1.0%

Weight loss 28d/120°C - 0.8%

Surface structure cured under water - No bubbles