



Direct Bury Straight Connectors



Product Description

John Guest's new range of direct bury straight connectors has been developed for use in direct buried fibre optic applications.

Features

- Snag Free Design – The tube stop design reduces tube ovality and allows full tube insertion, removing this as a possible fibre snag point. This feature also allows for poorly cut tube.
- 30J Impact Resistance @ -5°C.
- Minimal through bore deformation when impacted due to webbed inner connector.
- No Tube drop back.
- Simple tubular design – Stones/dirt cannot be compacted and stuck in outer profile of connector.
- Easy to wipe clean.
- Transparent body allows visual inspection of tube and fibre.

Material & Technical data

Parts List:

Body: Polycarbonate (Unfilled), clear
 Collet & Cartridges: Polypropylene (Unfilled), Black & Stainless Steel
 O-rings: Nitrile, Black

Working Pressures & Temperatures:

Blowing Pressure (Max): 16Bar
 Temperature Range: -25°C to +60°C

Product Code	Connector Size (mm)	Overall Length – not including collet tabs (mm)	Diameter (mm)	Through Bore (mm)
75437	7	41	18	4
75438	8	41	18	4
75439	12	53	23	8
75440	14	59	27	10
75441	16	63	28	12
75442	20	77	35	16

*THE ABOVE SIZES ARE PRELIMINARY AND MAY BE SUBJECT TO CHANGE

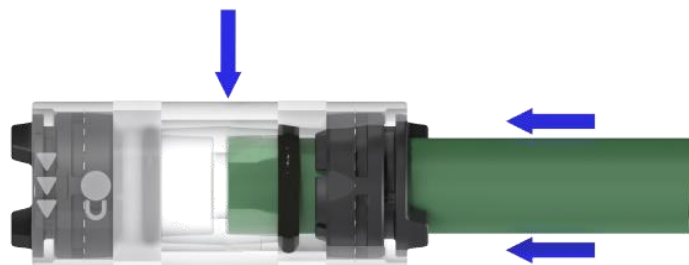
UK DS JG-DB-Straight

Issue B: 07/10/2020

Page 2 of 2

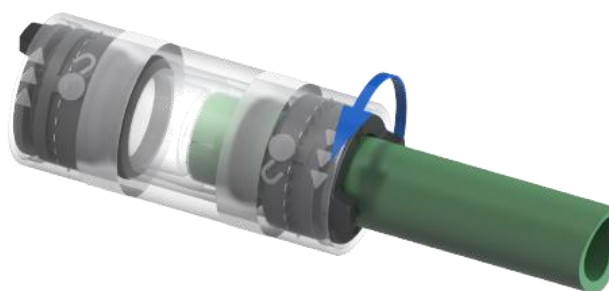
To Connect:

Insert Tube into straight connector up to the Tube Stop as shown. Connector supplied in locked position.

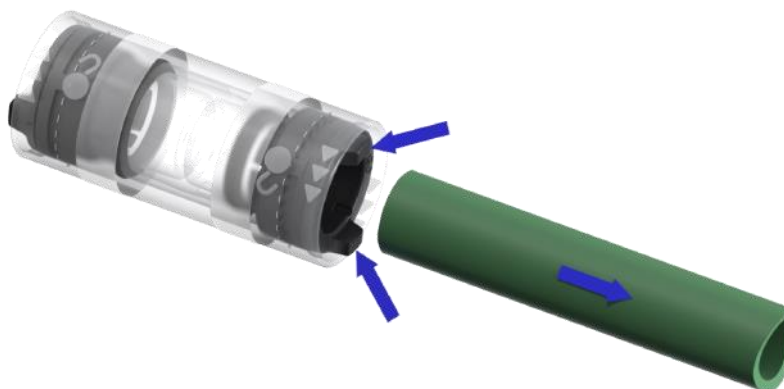


To Disconnect:

1. Twist collet lugs anti-clockwise to unlock position.



2. Push collet lugs inwards and pull tube away.



This document is intended as a guide only. Whilst the information it contains is believed to be correct, Emtelle can take no responsibility for actions taken based on the information contained in this document. Emtelle reserves the right to make changes to this document without notice. All sales of product are subject to Emtelle's terms and conditions of sale only, which can be found on Emtelle's website.
This document is protected by copyright (c) Emtelle Group [2020]. The products depicted are protected by intellectual property rights. Any unauthorized copying of this document or of our products is prohibited and Emtelle UK Limited will take action to prevent any infringement of its rights and to claim damages for the loss that it suffers.

www.emtelle.com