

AX-S™ Concrete Infill

Frame & Cover B125

300mm x 300mm

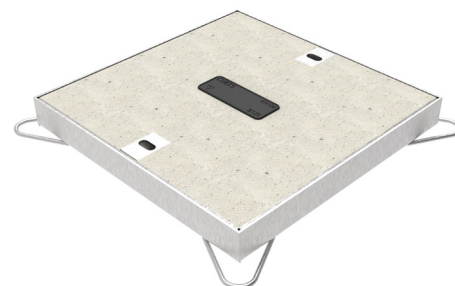


Product Description

AX-S™ Concrete Infill covers can be manufactured to suit an extensive range of clear openings, an industry favourite for their simplicity and ease of use.

Frame Details

Clear Opening:	300mm x 300mm	Including Riser:	N/A
External Dimensions:	392mm x 392mm	Crosspiece(s):	N/A
Depth:	52mm	Weight:	3.1kg



Cover Details

Cover Type:	1 x 385mm x 385mm
Weight:	17.2kg

Overall Details

Product Code:	FCCI07-03000300-00*0*B**1
Total Weight:	20.3kg

Installation

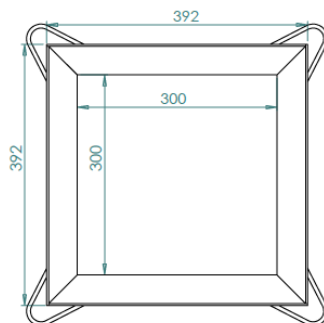
The product is designed for use in both footway and roadway installations where it provides access to underground ducting (EN124 Class A15-B125).

Key Features

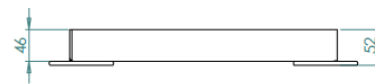
- Easy slide out covers
- No inherent scrap value
- Anti-slip surface



Scan for access to
technical documents library



Concrete Infill cross-section top view



Concrete Infill cross-section detail

FCCI-300x300-B V.02 20/02/2020