

STAKKAbox™ Fortress

Access Chamber Section

915mm x 445mm



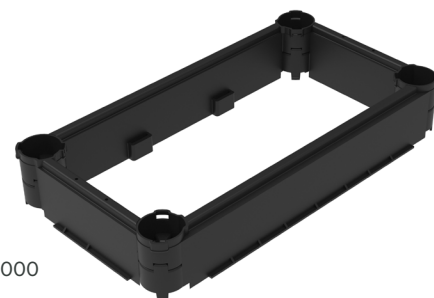
Product Description

STAKKAbox™ Fortress is a range of modular access chambers, made from 150mm deep riser sections which stack and interlock to offer flexibility in finished chamber depths.

Product Details

Clear Opening: 915mm x 445mm
 External Dimensions: 1027mm x 575mm
 Stacking Depth: 150mm
 Actual Depth: 170mm

Weight: 8.1kg
 Product Code: SYFF94-09150445-BK010C000
 Delivery Options: Assembled Ring



Materials Properties

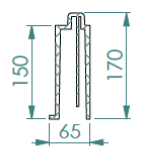
| | | |
|--------------------------------------|----------------------------------|---------------------------------|
| Material Profile | High Density Polyethylene (HDPE) | Black |
| Tensile Strength | ISO 527 | 22-26 MPA |
| Flexural Modulus | ISO 178 | 800 to 1100 N/mm ² |
| Notched Izod Impact Strength | ISO 180 - 1A | 4 - 6 KJ/m ³ |
| Density | ISO 1183-1 | 0.955 - 0.958 g/cm ³ |
| Service Temperature | - | -40 to +80 °C |
| Surface Resistivity | ASTM D257-14 | > 5.24E+15 ohm/square |
| Volume Resistivity | ASTM D257-14 | > 2.276.39E+15 ohm/cm |
| Fire Performance | UL94 | HB |
| Water Absorption (Non polar polymer) | - | 0.01% |

Installation

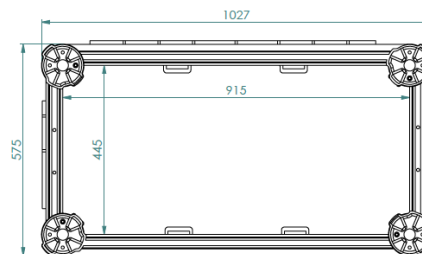
STAKKAbox™ Fortress has been tested to withstand vertical loads of EN124 D400. Please refer to the STAKKAbox™ Installation Guide for installation details.

Key Features

- Fast and easy to install
- Sectional & twin wall design
- Smooth outer walls with lip to 'key' in



Fortress Cross
Section Detail



Fortress cross-section top view



Scan for access to
technical documents library

Fortress cross-section detail

CPFF-09150445 V.02 27/02/2020