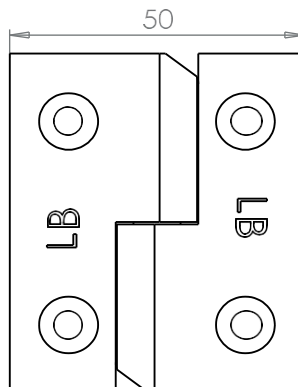
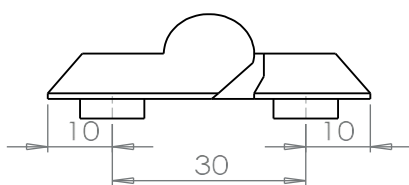
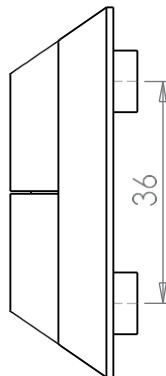
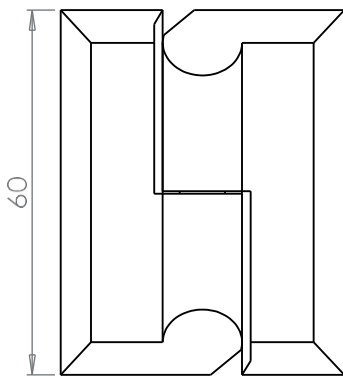




## Details

Repeated abuse testing has shown very high resistance to attempts to force hinge removal and total destruction of door is necessary to remove hinges

- Cast Stainless Steel 304
- Through panel bosses
- Stainless Steel backing plates fit inside enclosure for added security

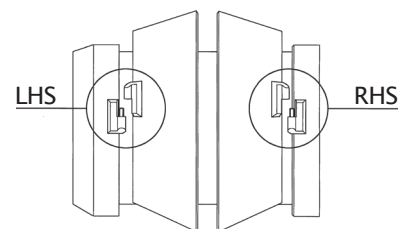


## Supply Features

Each hinge kit includes:

- 1 x hinge and pin
- 2 x backing plates
- 4 x patched socket cap screws

Part Number	Description
S83-0071	Left hand side
S83-0070	Right hand side



Ordering information:  
Order left / right hand separately