

Tight Buffered Pre-Terminated Fibre Cable

Overview

Tight buffered fibre optic cable is a type of indoor optical fibre cable that has a protective coating around each fibre strand to prevent damage. They are grouped together in a single cable and protected by an outer jacket. This offers flexibility, ease of termination, and high tensile strength, making them suitable for applications that require frequent handling or movement. They are cost-effective and reliable for high-speed data transmission.



Applications

- Indoor & Outdoor
- Inter-cabinet Links (Data Centres)
- Cable trays or non-submerged ducts
- Central office interconnections

Features

- Lightweight for easier installation
- Available with 900µm, 2mm or 2.4mm tails
- Made to measure to your requirements
- Manufactured in the UK

STANDARD RUGGEDISED TAIL COLOURS

OS2	OM1	OM3	OM4	OM5
Yellow	Grey	Aqua	Aqua	Green
			Erika Violet	

*bespoke options available upon request



Tight Buffered

Options

Fibre Type	Singlemode		OS2				
	Multimode		OM1*	OM3	OM4	OM5	
	*OM1 fibre is not held in stock but is available upon request.						
Fibre Count	4	8	12	16	20	24	48
Connector Type	LC/UPC	SC/UPC	FC/UPC	ST/UPC	E2000/UPC		
Multimode/Singlemode	LC/APC	SC/APC	FC/APC	ST/APC	E2000/APC	*APC available for singlemode only.	
Tail Options	900 µm	2 mm	2.4 mm				

Tail Configuration

Fan-out

Staggered



Cable Construction

Sheath	Black	LSZH		UV Stabilised		IEC 60332-1-2 IEC 60754-2 IEC 61034
Core/Cladding	OS2	OM1	OM3	OM4	OM5	
	9/125	62.5/125	50/125	50/125	50/125	

*The CPR rating of our cable is Eca as standard. Other ratings available upon request.



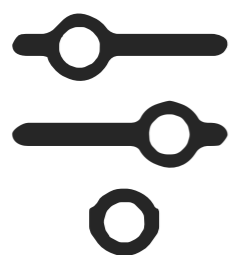
Our standard pre-terms are supplied with 1 metre tails

Pre-term length is measured gland-to-gland as standard

Our standard pre-terms are supplied with staggered tails



Customer specific configurations are available upon request.



How to Order Pre-Terminated Solutions

The 7 steps outlined below will provide us with the minimum required information to build your bespoke pre-terminated assemblies. Please note that our pre-terminated assemblies will be manufactured with standard options unless specified on your order.

1 Fibre Count

2 / 4 / 8 / 12 / 16 / 24 / 48 / 96

(Maximum fibre count is dependant on cable construction)

2 End A Connectors

LC / SC / ST / FC / E2000 / LCA / SCA / FCA / E2A

3 End B Connectors

LC / SC / ST / FC / E2000 / LCA / SCA / FCA / E2A / NONE

4 Fibre Type

OM1 / OM3 / OM4 / OM5 / OS2

(●OM1 fibre is not held in stock but is available upon request)

5 Cable Construction

Tight Buffered / Loose Tube / Corrugated Steel Tape / Steel Wire Armoured / Re-deployable

6 Tail Configuration

Fan-out / 900µm / 2.0mm / 2.4mm / Staggered / 900µm / 2.0mm / 2.4mm

(Standard tail length is 1m, unless alternative length is specified)

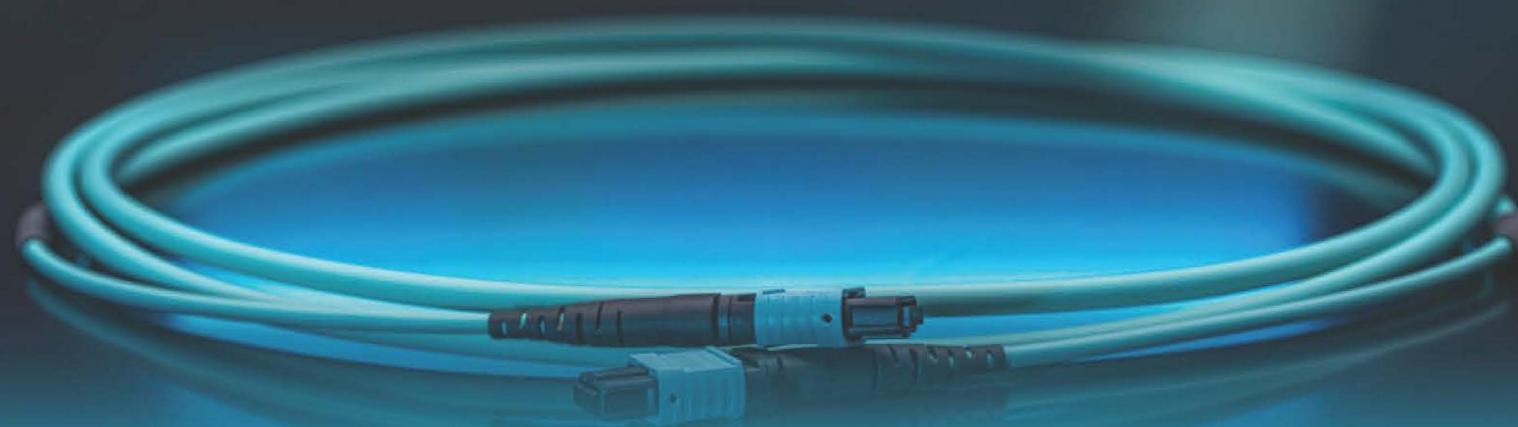
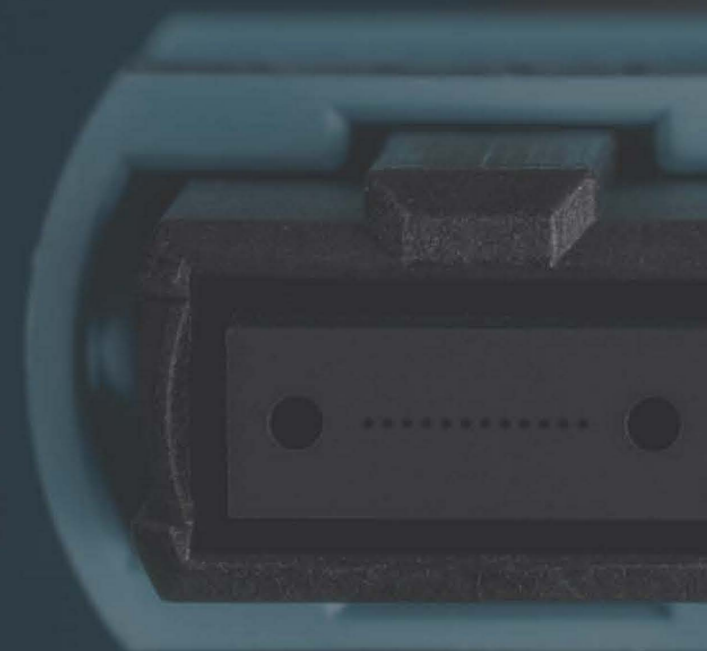
7 Length in Metres

Your required length in metres

(Standard measurement is gland-to-gland, unless specified)



MTP®/MPO
UK Production



MTP®/MPO qualified technicians means we are able to manufacture a complete range of standard and custom products, including; patch cables, trunk cables and breakout cables. This allows for application led orders, while maintaining fast turnaround times.