

# Steel Wire Armoured Pre-Terminated Fibre

## Overview

A steel wire armoured fibre optic cable, also known as SWA cable, is a type of optical fibre cable that is designed for rugged environments. These cables have a central tube containing individual fibre strands that is surrounded by layers of steel wire and a tough outer jacket. The steel wire armoring provides additional protection against physical damage, such as rodent bites or crushing, while the outer jacket is resistant to moisture, UV radiation, and temperature changes. SWA cables are commonly used in applications such as power distribution, railway systems, and mining, where protection against harsh outdoor conditions is essential.



## Applications

- Indoor & Outdoor
- Harsh environments
- Suitable for direct burial
- Inter-site connections

## Features

- Excellent crush resistance
- Rodent resistant
- Available with 900µm, 2mm or 2.4mm tails
- Made to measure to your requirements
- Manufactured in the UK

### STANDARD RUGGEDISED TAIL COLOURS

OS2	OM1	OM3	OM4	OM5
Yellow	Grey	Aqua	Aqua	Green
			Erika Violet	

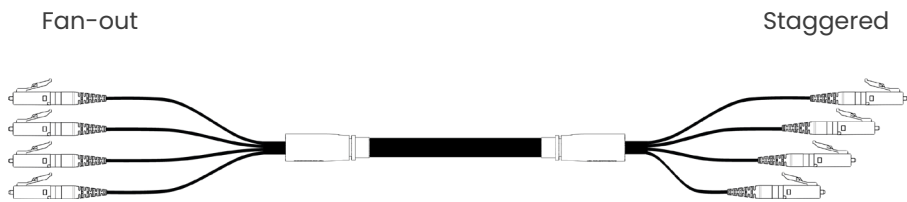
\*bespoke options available upon request



## Options

Fibre Type	Singlemode		OS2			
	Multimode		OM1*	OM3	OM4	OM5
Fibre Count	4		8	12	16	20
	24		*OM1 fibre is not held in stock but is available upon request.			
Connector Type Multimode/Singlemode	LC/UPC		SC/UPC	FC/UPC	ST/UPC	E2000/UPC
	LC/APC		SC/APC	FC/APC	ST/APC	E2000/APC
Tail Options		900 µm	2 mm	2.4 mm	*APC available for singlemode only.	

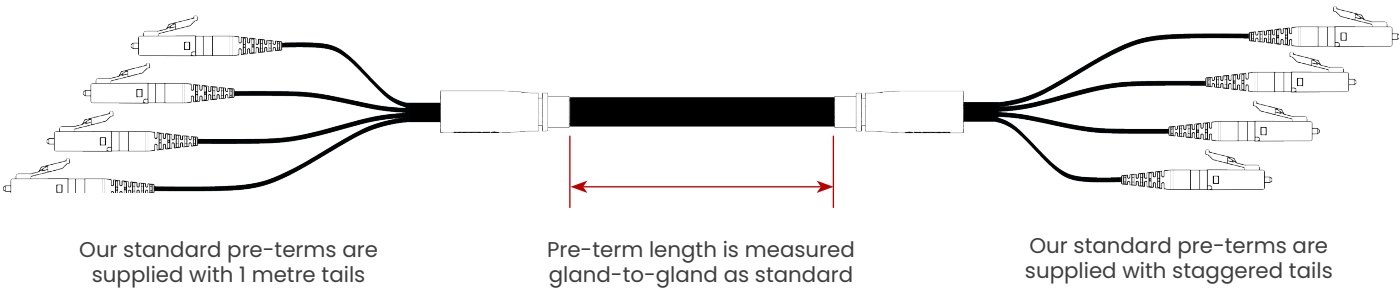
## Tail Configuration



## Cable Construction

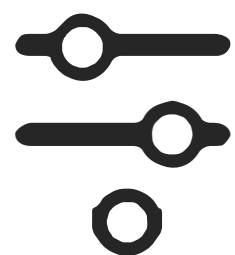
Sheath	Black	LSZH		UV Stabilised		IEC 60332-1-2 IEC 60754-2 IEC 61034
Core/Cladding	OS2	OM1	OM3	OM4	OM5	
	9/125	62.5/125	50/125	50/125	50/125	

\*The CPR rating of our cable is Eca as standard. Other ratings available upon request.



Customer specific configurations are available upon request.

Steel Wire Armoured



# How to Order Pre-Terminated Solutions

*The 7 steps outlined below will provide us with the minimum required information to build your bespoke pre-terminated assemblies. Please note that our pre-terminated assemblies will be manufactured with standard options unless specified on your order.*

## 1 Fibre Count

2 / 4 / 8 / 12 / 16 / 24 / 48 / 96

*(Maximum fibre count is dependant on cable construction)*

## 2 End A Connectors

LC / SC / ST / FC / E2000 / LCA / SCA / FCA / E2A

## 3 End B Connectors

LC / SC / ST / FC / E2000 / LCA / SCA / FCA / E2A / NONE

## 4 Fibre Type

OM1 / OM3 / OM4 / OM5 / OS2

*(●OM1 fibre is not held in stock but is available upon request)*

## 5 Cable Construction

Tight Buffered / Loose Tube / Corrugated Steel Tape / Steel Wire Armoured / Re-deployable

## 6 Tail Configuration

Fan-out / 900µm / 2.0mm / 2.4mm / Staggered / 900µm / 2.0mm / 2.4mm

*(Standard tail length is 1m, unless alternative length is specified)*

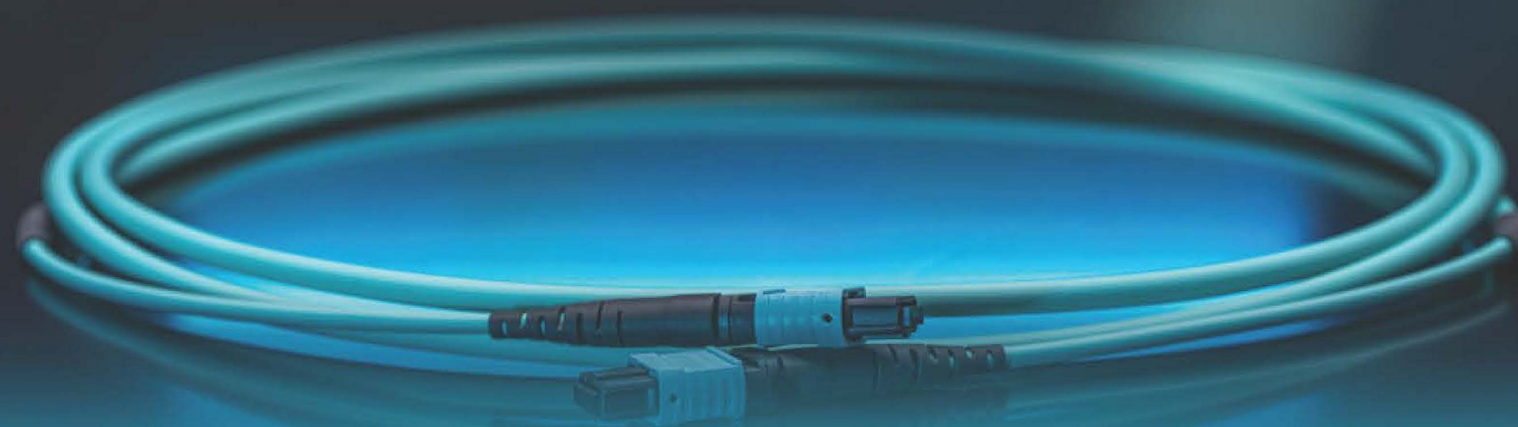
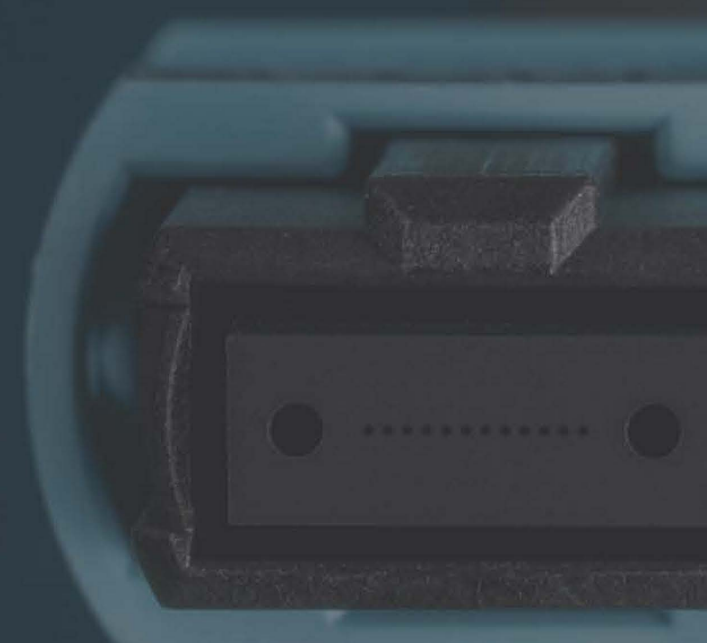
## 7 Length in Metres

Your required length in metres

*(Standard measurement is gland-to-gland, unless specified)*



**MTP®/MPO**  
**UK Production**



MTP®/MPO qualified technicians means we are able to manufacture a complete range of standard and custom products, including; patch cables, trunk cables and breakout cables. This allows for application led orders, while maintaining fast turnaround times.