

Mil-Tac/Re-deployable Pre-Terminated Fibre

Overview

Mil-Tac or re-deployable fibre optic cables are specialised fibre optic cables designed for military and rapid-deployment applications where fast and reliable communication is essential. These cables are typically compact, lightweight, and easy to transport, making them ideal for use in harsh environments such as battlefields, disaster zones, and other emergency situations. They are built with ruggedised materials to withstand extreme temperatures, moisture, and physical shock. Re-deployable fibre optic cables can be quickly installed, dismantled, and reinstalled in different locations, making them a versatile and reliable choice for military and other demanding applications.



Applications

- Indoor & Outdoor
- Harsh environments
- Suitable for rapid re-deployment
- TV and broadcast

Features

- Screw on/off protective pulling tube
- Re-usable cable/skeleton reels
- Available with 2mm or 2.4mm tails
- Made to measure to your requirements
- Manufactured in the UK

STANDARD RUGGEDISED TAIL COLOURS

OS2

Yellow

OM1

Grey

OM3

Aqua

OM4

Aqua

OM5

Green

Erika Violet

*bespoke options available upon request

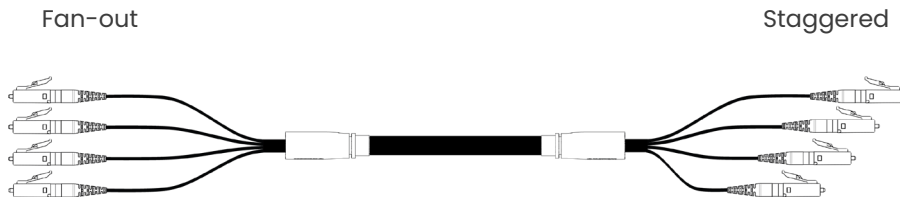


Mil-Tac/Re-deployable

Options

Fibre Type	Singlemode		OS2					
	Multimode		OM1*	OM3	OM4	OM5		
	*OM1 fibre is not held in stock but is available upon request.							
Fibre Count	4	8	12	16	20	24	48	96
Connector Type	LC	SC	FC	ST	E2000/UPC			
Multimode/Singlemode	LC/APC	SC/APC	FC/APC	ST/APC	E2000/APC	*APC available for singlemode only.		
Tail Options	900 µm	2 mm	2.4 mm					

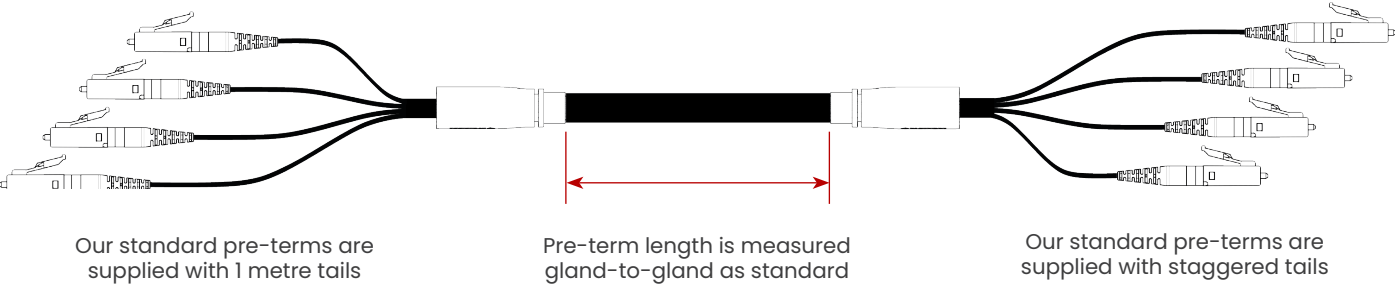
Tail Configuration



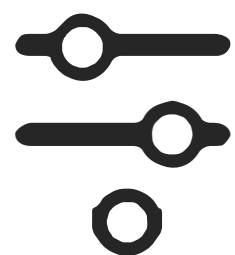
Cable Construction

Sheath	Black		LSZH		UV Stabilised	IEC 60754-2 IEC 61034
Core/Cladding	OS2	OM1	OM3	OM4	OM5	
	9/125	62.5/125	50/125	50/125	50/125	

*The CPR rating of our cable is Eca as standard. Other ratings available upon request.



Customer specific configurations are available upon request.



How to Order Pre-Terminated Solutions

The 7 steps outlined below will provide us with the minimum required information to build your bespoke pre-terminated assemblies. Please note that our pre-terminated assemblies will be manufactured with standard options unless specified on your order.

1 Fibre Count

2 / 4 / 8 / 12 / 16 / 24 / 48 / 96

(Maximum fibre count is dependant on cable construction)

2 End A Connectors

LC / SC / ST / FC / E2000 / LCA / SCA / FCA / E2A

3 End B Connectors

LC / SC / ST / FC / E2000 / LCA / SCA / FCA / E2A / NONE

4 Fibre Type

OM1 / OM3 / OM4 / OM5 / OS2

(●OM1 fibre is not held in stock but is available upon request)

5 Cable Construction

Tight Buffered / Loose Tube / Corrugated Steel Tape / Steel Wire Armoured / Re-deployable

6 Tail Configuration

Fan-out / 900µm / 2.0mm / 2.4mm / Staggered / 900µm / 2.0mm / 2.4mm

(Standard tail length is 1m, unless alternative length is specified)

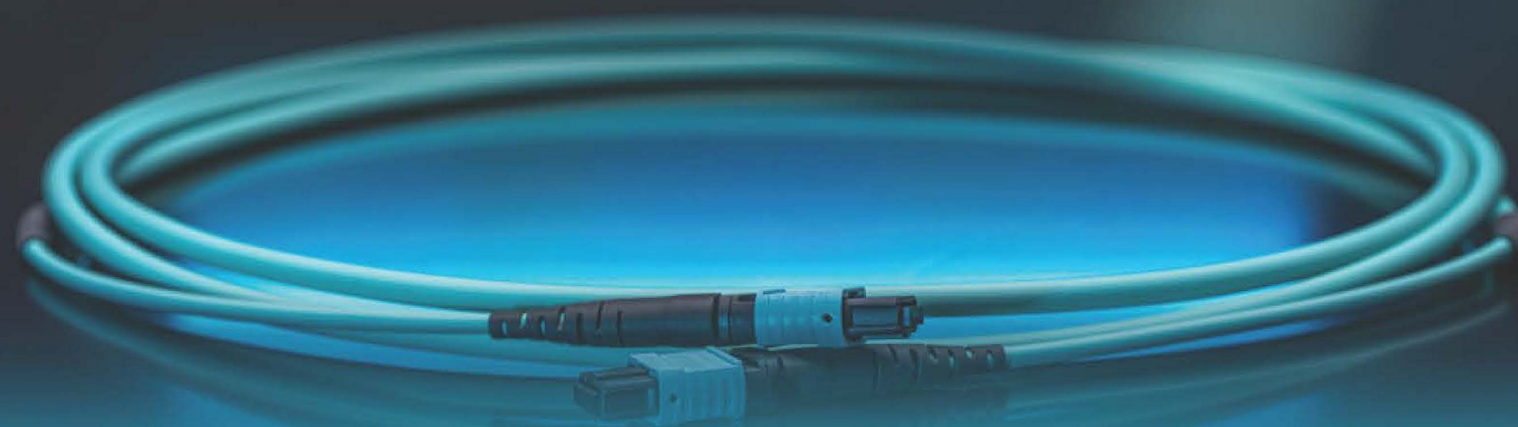
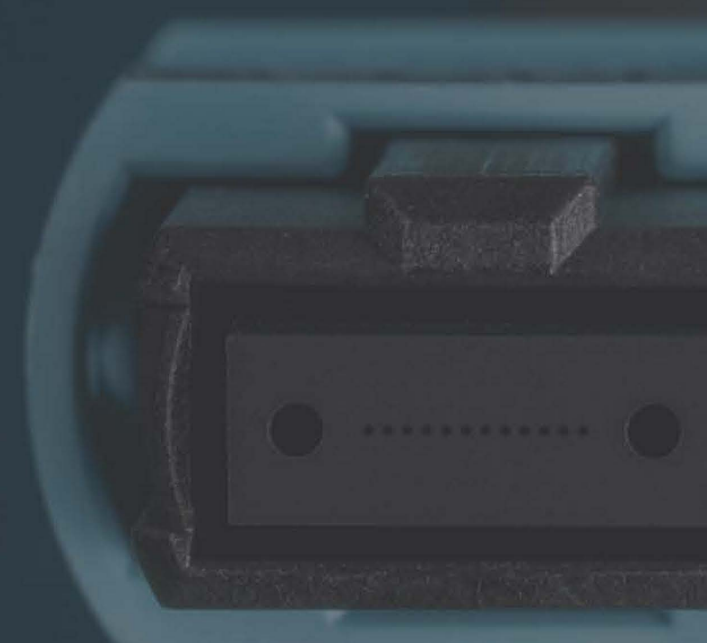
7 Length in Metres

Your required length in metres

(Standard measurement is gland-to-gland, unless specified)



MTP®/MPO
UK Production



MTP®/MPO qualified technicians means we are able to manufacture a complete range of standard and custom products, including; patch cables, trunk cables and breakout cables. This allows for application led orders, while maintaining fast turnaround times.