

# Loose Tube Pre-Terminated Fibre Cable

## Overview

A loose tube fibre optic cable is a type of optical fibre cable commonly used in outdoor applications such as long-distance telecommunications, oil and gas pipelines, and security systems. Unlike tight buffered cables, loose tube cables have individual fibre strands that are loosely held within a protective tube made of plastic or gel material. This design provides additional protection against moisture, temperature changes, and other environmental factors. Loose tube cables are known for their durability and ability to withstand harsh outdoor conditions.



## Applications

- Indoor & Outdoor
- Inter-cabinet Links (Data Centres)
- Cable trays or ducts
- LAN & WAN Backbones
- FTTX
- Telecom access lines

## Features

- Lightweight for easier installation
- Water-blocking design
- Available with 900µm, 2mm or 2.4mm tails
- Made to measure to your requirements
- Manufactured in the UK

### STANDARD RUGGEDISED TAIL COLOURS

OS2

Yellow

OM1

Grey

OM3

Aqua

OM4

Aqua

OM5

Green

Erika Violet

\*bespoke options available upon request

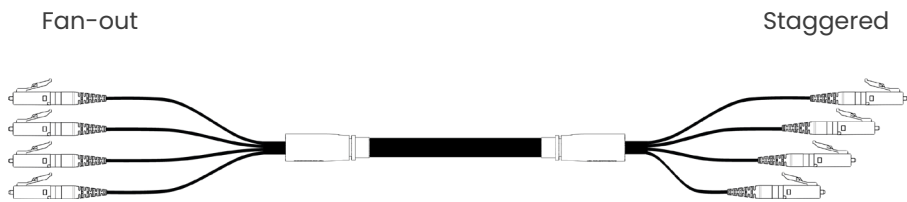


Loose Tube

## Options

Fibre Type	Singlemode		OS2						
	Multimode		OM1*	OM3	OM4	OM5			
	*OM1 fibre is not held in stock but is available upon request.								
Fibre Count	4	8	12	16	20	24	48	96	
Connector Type	LC/UPC	SC/UPC	FC/UPC	ST/UPC	E2000/UPC				
Multimode/Singlemode	LC/APC	SC/APC	FC/APC	ST/APC	E2000/APC	*APC available for singlemode only.			
Tail Options	900 µm	2 mm	2.4 mm						

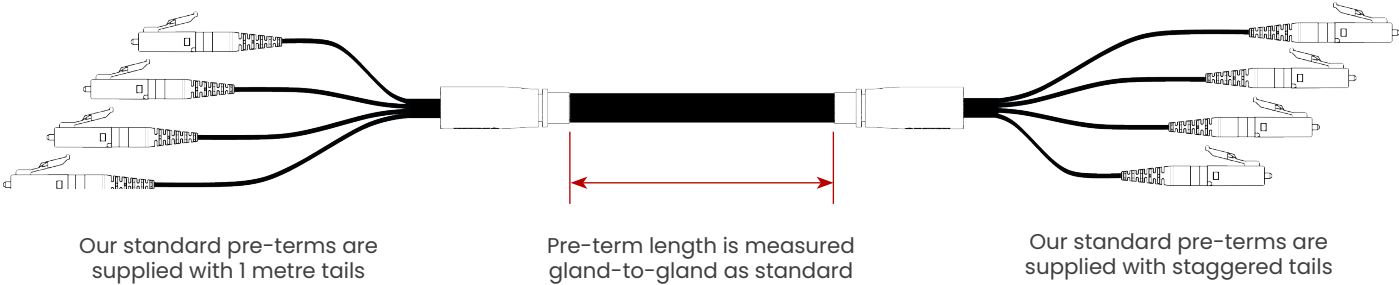
## Tail Configuration



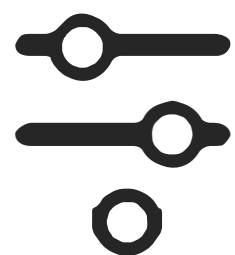
## Cable Construction

Sheath	Black		LSZH		UV Stabilised	IEC 60332-1-2 IEC 60754-2 IEC 61034
Core/Cladding	OS2	OM1	OM3	OM4	OM5	
	9/125	62.5/125	50/125	50/125	50/125	

\*The CPR rating of our cable is Eca as standard. Other ratings available upon request.



Customer specific configurations are available upon request.



# How to Order Pre-Terminated Solutions

*The 7 steps outlined below will provide us with the minimum required information to build your bespoke pre-terminated assemblies. Please note that our pre-terminated assemblies will be manufactured with standard options unless specified on your order.*

## 1 Fibre Count

2 / 4 / 8 / 12 / 16 / 24 / 48 / 96

*(Maximum fibre count is dependant on cable construction)*

## 2 End A Connectors

LC / SC / ST / FC / E2000 / LCA / SCA / FCA / E2A

## 3 End B Connectors

LC / SC / ST / FC / E2000 / LCA / SCA / FCA / E2A / NONE

## 4 Fibre Type

OM1 / OM3 / OM4 / OM5 / OS2

*(●OM1 fibre is not held in stock but is available upon request)*

## 5 Cable Construction

Tight Buffered / Loose Tube / Corrugated Steel Tape / Steel Wire Armoured / Re-deployable

## 6 Tail Configuration

Fan-out / 900µm / 2.0mm / 2.4mm / Staggered / 900µm / 2.0mm / 2.4mm

*(Standard tail length is 1m, unless alternative length is specified)*

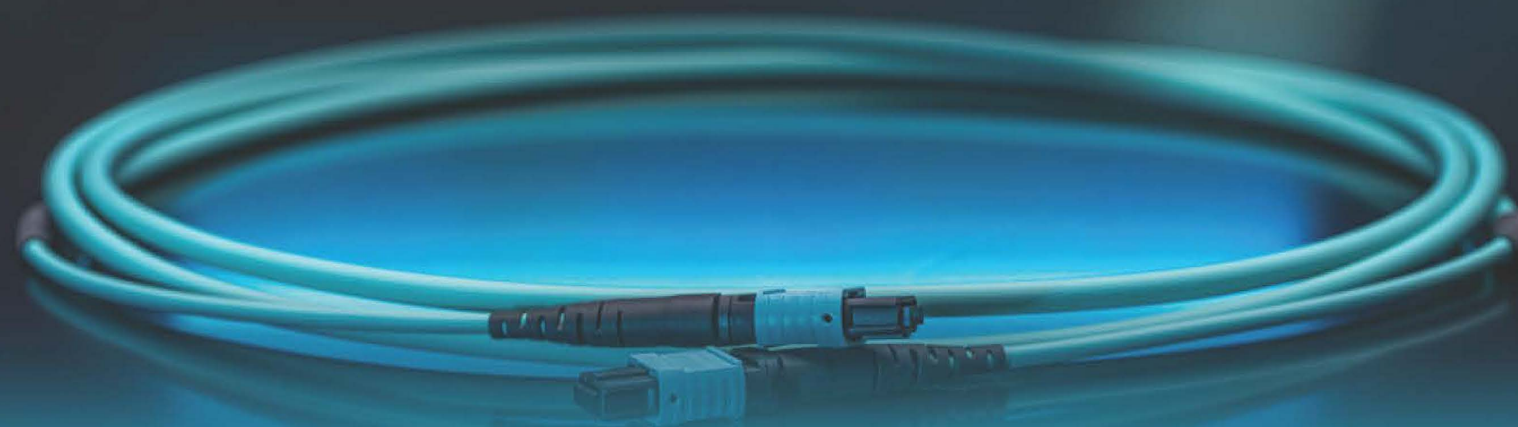
## 7 Length in Metres

Your required length in metres

*(Standard measurement is gland-to-gland, unless specified)*



**MTP®/MPO**  
**UK Production**



MTP®/MPO qualified technicians means we are able to manufacture a complete range of standard and custom products, including; patch cables, trunk cables and breakout cables. This allows for application led orders, while maintaining fast turnaround times.