



SAFETY AT THE HIGHEST LEVEL

Corner Access Kit

Assembly Instructions



Easi-Dec Access Systems Ltd.,
Merlin House,
Blaydon Road,
Sandy
SG19 1RZ
Tel: +44 (0) 1767 691812
Fax: +44 (0) 1767 691802

E-Mail: info@easi-dec.com
Internet: www.easi-dec.com

PLEASE BE ADVISED: Before assembling the Corner access Kit for the first time, it is highly recommended that Installers familiarise themselves with the component parts and carry out a test assembly and disassembly in a safe area away from the point of final installation. All component parts detailed in the operating instructions must be used in the assembly of the system. Should a piece be missing or appear defective do not continue to assemble and contact Easi-Dec Immediately.

Step1



Lay out the components ready for assembly with the platform against the wall with wheels on the ground. Identify the corresponding leg for each side of the platform (Green – Left / Red – Right)

Step 2



Fit both Legs using the Pins and 'R' Clips provided and ensure that the pins are inserted outside in, to minimise the risk of the 'R' Clips being Knocked out. **REMEMBER:** Fit the Legs to the 'Normal use' hole Labelled on the underside of the platform.

Step 3



Swing the Dec support struts and secure with the Pins and 'R' Clips provided.

Step 4



Pull out the clips and release the two Cross Braces from their stowed position.

Step 5



Fit the Horizontal Brace over the retaining studs.

Step 6



Swing out each Cross brace over to the opposite Leg and secure onto the retaining stud using the two 'R' clips provided in a downward position.

Step 7



Remove the top bolt and slacken the bottom bolt at the Roller Bar, horn connection point for Corner Leg assembly.

Step 8



Attach the corner leg and fix in position with the Pin and 'R' Clip fixed into the Rolling Window Bar arms. **REMEMBER:** Hand Tighten the remaining bolt.

Step 9



Extend the main Legs to the height required and lift the Corner-Dec up with bent legs and a straight back, firstly to waist height, then using your arms to offer it to the wall and roll it up into position.

NOTE: Pay particular attention to the balance of the Corner-Dec, the position of the handhold and the way the Claw Foot grips whilst taking a second handhold.

Step 10



Allow the corner leg to 'Swing' into position now level the platform in both directions by adjusting the Feet. Extend the corner leg to the ground and secure with Pin and 'R' clip.

Step 11



Fit the telescopic Horizontal Brace with the Pins and 'R' clips provided. **REMEMBER:** to fit the Pin and 'R' clip to the adjustment holes in the centre of the Brace; this will prevent the corner leg closing.

Step 12



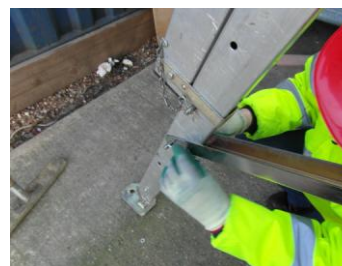
Fit the back Leg by removing the middle pin first, Holding onto it and lowering the brace.

Step 13



Remove top pin and fit the back Leg at about eye level to the Main Leg..

Step 14



When fitting the Brace the Back Leg Foot should be as close to the wall as possible, without fouling the wall or touching the ground. Fit the Pin and 'R' Clip.

Step 15



Fig 1 Easi-Dec Ladder spurs.

Foot the Ladder or use a suitable Ladder safety device, such as Easi-Dec Ladder spurs shown in **Fig 1**. Climb the ladder and Tie off both sides with the Ladder ties provided with the Ladder 1m above the Platform.

Step 16



Position the Left Guardrail over your shoulder, when climbing the Ladder, maintain three points of contact. **REMEMBER:** When fitting the Guardrail to the Right hand side of the Platform carry up on the Right shoulder.

Step 17



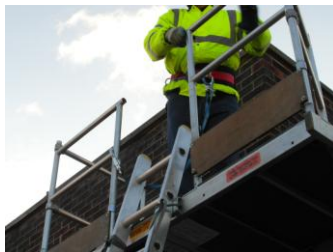
Feed one arm through the top rung of the Ladder and fit the Right Guardrail into the two front sockets and gently ease the back of the Guardrail open. **(NOTE: Always Feed one arm through the top rung as this provides a handhold when positioning the Guardrail.)**

Step 18



Fit the Left hand guardrail into the two front sockets and gently ease the back of the Guardrail open. **REMEMBER:** Always have your arm through the top rung of the Ladder when positioning the guardrails.

Step 19



Climb onto the Platform and position the rear Uprights into the rear locating sockets on the Platform for both the Left and Right handed Guardrail. Make sure all uprights have been secured with Pins & 'R' Clips provided.

Step 20



Fig 2. Positioning the Dec's.

Tie a rope through the Guardrail sockets and secure at the end of the Catwalk. Position the Easi-Decs 4m apart using the Guardrail or staging as a guide. **REMEMBER:** To allow a minimum of 300mm overhang of Catwalk on each Dec **Fig 2**.

Step 21



Stand the Catwalk up against the Platform and Install the centre posts on the Catwalk and secure with Pin and 'R' Clip. This will allow assembly of the guardrail set prior to access.

Step 22



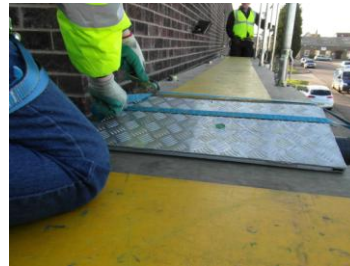
With both operatives clipped on with lanyards the Catwalk can now be raised into position. An operative must hold onto one end and guide while the second operative hoists the opposite end up until the Catwalk is Level at Platform height. The catwalk is then pulled into position with a minimum of 300mm overhang on each Platform.

Step 23



With both operatives clipped on with Lanyards turn the platform on its side and release the towing rope.

Step 24



Using the 2 'Ratchet' Straps provided, fix the 'Catwalk' to the Corner-Dec as shown above. Pass the straps round the 'Horns' through the Ring Bolt and round the Catwalk, tightening the Buckle in a position where it will not trip the user.

Step 25



Fit the end Uprights and position the Top and Mid rail over the Uprights from the 2m platforms. Make sure each operative is still clipped on with a Lanyard. At this stage tighten all grub screws and secure uprights with pin's and 'R' Clip's.

Step 26



Fit the toe boards to complete assembly.

TOP FIX



Always tie in the dec's to the wall with a strap and eye bolt.

Remember

- Always Tie-off securely to the building.
- Always ensure the Ladders are secure before raising the Catwalk.
- All Ladders should be erected using 4:1 rule and tied off for maximum safety.
- Always ensure a minimum of 300mm of the staging sits on each Platform.
- Always assess the site for suitability. Spiking of the feet maybe required.
- Always strap the staging securely onto the platform.
- Maximum load distributed load of 300Kg per dec.

Dismantle: Reverse the above procedure.